

**PAB397Hu01**

**Polyclonal Antibody to Platelet Activating Factor Acetylhydrolase Ib3 (PAFAH1B3)**

**Organism Species: *Homo sapiens* (Human)**

***Instruction manual***

FOR RESEARCH USE ONLY

NOT FOR USE IN CLINICAL DIAGNOSTIC PROCEDURES

---

13th Edition (Revised in Aug, 2023)

### **[ PROPERTIES ]**

**Source:** Polyclonal antibody preparation

**Host:** Rabbit

**Purification:** Antigen-specific affinity chromatography followed by Protein A affinity chromatography

**Traits:** Liquid

**Concentration:** 500µg/mL

**UOM:** 100µL

**Cross Reactivity:** N/A

**Applications:** WB,IHC

### **[ IMMUNOGEN ]**

**Immunogen:** Recombinant PAFAH1B3 (His28~Pro231) expressed in *E.coli*

**Accession No.:** RPB397Hu01

### **[ APPLICATIONS ]**

Western blotting: 0.01-2µg/mL

Immunohistochemistry: 5-20µg/mL

Optimal working dilutions must be determined by end user.

### **[ FORMULATION ]**

**Form & Buffer:** Supplied as solution form in 0.01M PBS, pH7.4, containing 0.05% Proclin-300, 50% glycerol.

### **[ STORAGE AND STABILITY ]**

**Storage:** Avoid repeated freeze/thaw cycles.

Store at 4°C for frequent use.

Aliquot and store at -20°C for 24 months.

**Stability Test:** The thermal stability is described by the loss rate. The loss rate was determined by accelerated thermal degradation test, that is, incubate the protein at 37°C for 48h, and no obvious degradation and precipitation were observed. The loss rate is less than 5% within the

expiration date under appropriate storage condition.

**[ IDENTIFICATION ]**

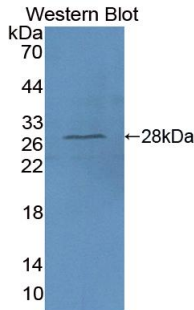
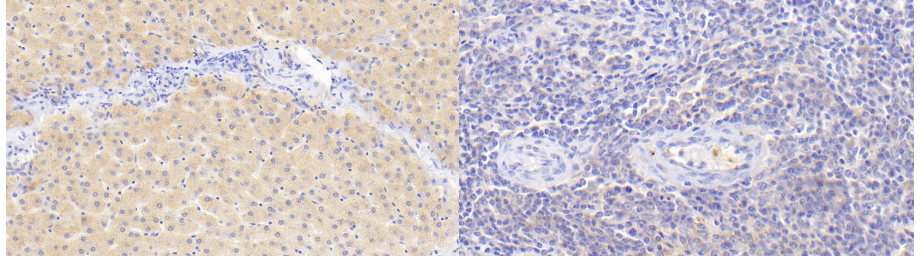
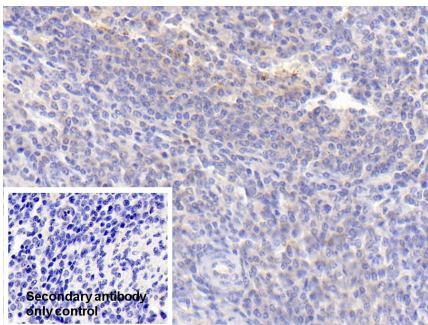


Figure. Western Blot; Sample: Recombinant PAFAH1B3, Human.

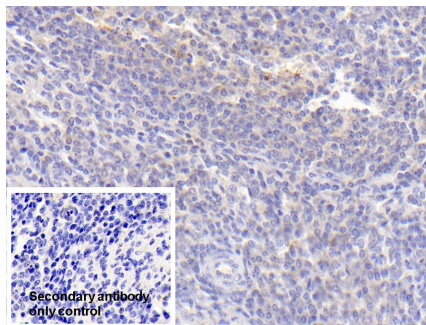


DAB staining on IHC-P; Samples: Human Liver Tissue; Primary Ab: 20µg/mL Rabbit Anti-Human PAFAH1B3 Antibody Second Ab: 2µg/mL HRP-Linked Caprine Anti-Rabbit IgG Polyclonal Antibody (Catalog: SAA544Rb19)

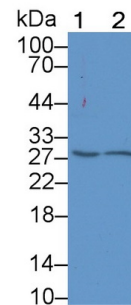
DAB staining on IHC-P; Samples: Human Spleen Tissue; Primary Ab: 20µg/mL Rabbit Anti-Human PAFAH1B3 Antibody Second Ab: 2µg/mL HRP-Linked Caprine Anti-Rabbit IgG Polyclonal Antibody (Catalog: SAA544Rb19)



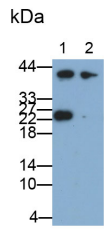
DAB staining on IHC-P; Sample: Human Liver Tissue Primary Ab: 20µg/mL Rabbit Anti-Human PAFAH1B3 Antibody Control: Used PBS instead of primary antibody Second Ab: 2µg/mL HRP-Linked Caprine Anti-Rabbit IgG Polyclonal Antibody (Catalog: SAA544Rb19)



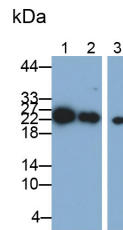
DAB staining on IHC-P; Sample: Human Spleen Tissue Primary Ab: 20µg/mL Rabbit Anti-Human PAFAH1B3 Antibody Control: Used PBS instead of primary antibody Second Ab: 2µg/mL HRP-Linked Caprine Anti-Rabbit IgG Polyclonal Antibody (Catalog: SAA544Rb19)



Western Blot; Sample: Lane1: Jurkat cell lysate; Lane2: HeLa cell lysate Primary Ab: 1µg/mL Rabbit Anti-Human PAFAH1B3 Antibody Second Ab: 0.2µg/mL HRP-Linked Caprine Anti-Rabbit IgG Polyclonal Antibody (Catalog: SAA544Rb19)



Western Blot; Samples: Lane1: HeLa cell lysate; Lane2: U87MG cell lysate;  
Primary Ab: 0.05µg/mL Rabbit Anti-Human PFAFH1B3 Antibody  
Second Ab: 0.2µg/mL HRP-Linked Caprine Anti-Rabbit IgG Polyclonal Antibody  
(Catalog: SAA544Rb19)



Western Blot; Samples: Lane1: K562 cell lysate; Lane2: 293T cell lysate; Lane3: Jurkat cell lysate;  
Primary Ab: 0.05µg/mL Rabbit Anti-Human PFAFH1B3 Antibody  
Second Ab: 0.2µg/mL HRP-Linked Caprine Anti-Rabbit IgG Polyclonal Antibody  
(Catalog: SAA544Rb19)

**[ IMPORTANT NOTE ]**

The kit is designed for research use only, we will not be responsible for any issue if the kit was used in clinical diagnostic or any other procedures.