

PAC060Hu01

Polyclonal Antibody to Platelet Derived Growth Factor Receptor Alpha (PDGFRa)

Organism Species: *Homo sapiens (Human)*

Instruction manual

FOR RESEARCH USE ONLY

NOT FOR USE IN CLINICAL DIAGNOSTIC PROCEDURES

13th Edition (Revised in Aug, 2023)

[PROPERTIES]

Source: Polyclonal antibody preparation

Host: Rabbit

Purification: Antigen-specific affinity chromatography followed by Protein A affinity chromatography

Traits: Liquid

Concentration: 0.5mg/mL

UOM: 20µg(40µL)

Cross Reactivity: Mouse;Rat;Cavia;Canine;Porcine;Bovine;Caprine;Ovine

Applications: WB; IHC; ICC; IP.

[IMMUNOGEN]

Immunogen: Recombinant PDGFRa (Ala170~Glu387) expressed in *E.coli*

Accession No.: RPC060Hu01

[APPLICATIONS]

Western blotting: 0.01-2µg/mL;

Immunohistochemistry: 5-20µg/mL;

Immunocytochemistry: 5-20µg/mL;

Optimal working dilutions must be determined by end user.

[FORMULATION]

Form & Buffer: Supplied as solution form in PBS, pH7.4, containing 0.02% NaN₃, 50% glycerol.

[STORAGE AND STABILITY]

Storage: Avoid repeated freeze/thaw cycles.

Store at 4°C for frequent use.

Aliquot and store at -20°C for 24 months.

Stability Test: The thermal stability is described by the loss rate. The loss rate was determined by accelerated thermal degradation test, that is, incubate the protein at 37°C for 48h, and no

obvious degradation and precipitation were observed. The loss rate is less than 5% within the expiration date under appropriate storage condition.

[IDENTIFICATION]

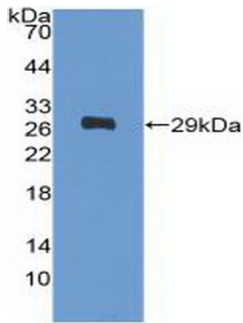
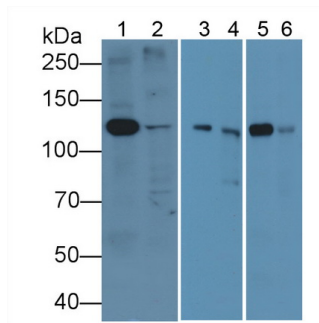


Figure. Western Blot; Sample: Recombinant PDGFRa, Human.



Western Blot; Sample: Lane1: Porcine Cerebrum lysate; Lane2: Porcine Heart lysate; Lane3: Bovine Cerebrum lysate; Lane4: Bovine Heart lysate; Lane5: Caprine Cerebrum lysate; Lane6: Caprine Heart lysate

Primary Ab: 5µg/mL Rabbit Anti-Human PDGFRa Ab
 Second Ab: 0.2µg/mL HRP-Linked Caprine Anti-Rabbit IgG Polyclonal Antibody
 (Catalog: SAA544Rb19)

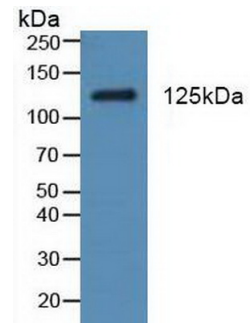
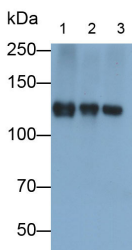
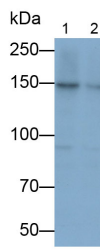


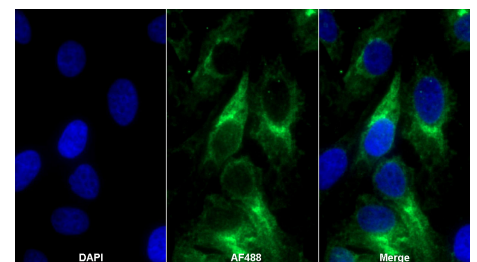
Figure. Western Blot; Sample: Rat Testis Tissue.



Western Blot; Samples: Lane1: Rat Cerebrum lysate; Lane2: Mouse Cerebrum lysate; Lane3: Porcine Cerebrum lysate;
 Primary Ab: 0.3µg/ml Rabbit Anti-



Western Blot; Samples: Lane1: HepG2 cell lysate; Lane2: SH-SY5Y cell lysate;
 Primary Ab: 0.3µg/ml Rabbit Anti-Human PDGFRa Antibody
 Second Ab: 0.2?g/ml HRP-Linked



AF488 staining on IF;
 Sample: HeLa cell
 Primary Ab: 20µg/ml Rabbit Anti-Human PDGFRa Antibody
 Second Ab: 2?g/ml AF488-Linked Caprine Anti-Rabbit IgG Polyclonal Antibody

Human PDGFRa Antibody	Caprine Anti-Rabbit IgG Polyclonal	(Catalog: SAA544Rb11)
Second Ab: 0.2?g/ml HRP-Linked	Antibody	
Caprine Anti-Rabbit IgG Polyclonal	(Catalog: SAA544Rb19)	
Antibody		
(Catalog: SAA544Rb19)		

[IMPORTANT NOTE]

The kit is designed for research use only, we will not be responsible for any issue if the kit was used in clinical diagnostic or any other procedures.