

PAH437Hu01**Polyclonal Antibody to Polybromo 1 (PBRM1)****Organism Species: Homo sapiens (Human)*****Instruction manual***

FOR IN VITRO USE AND RESEARCH USE ONLY

NOT FOR USE IN CLINICAL DIAGNOSTIC PROCEDURES

11th Edition (Revised in May, 2016)

[PROPERTIES]**Source:** Polyclonal antibody preparation**Host:** Rabbit**Purification:** Antigen-specific Affinity Chromatography.**Traits:** Liquid**Concentration:** 200µg/mL**UOM:** 100µg**Applications:** WB; ICC; IHC-P; IHC-F; ELISA; IP; IF; FCM.**[IMMUNOGEN]****Immunogen:** RPH437Hu01-Recombinant Polybromo 1 (PBRM1)**[APPLICATIONS]**

Western blotting: 0.5-2ug/ml

Immunocytochemistry in formalin fixed cells: 5-20ug/ml

Immunohistochemistry in formalin fixed frozen section: 5-20ug/ml

Immunohistochemistry in paraffin section: 5-20ug/ml

Enzyme-linked Immunosorbent Assay: 0.05-2ug/ml

Optimal working dilutions must be determined by end user.

[FORMULATION]**Form & Buffer:** Supplied as solution form in PBS, pH7.4, containing 0.02% NaN₃, 50% glycerol.

[**STORAGE AND STABILITY**]

Storage: Avoid repeated freeze/thaw cycles.

Store at 4°C for frequent use.

Aliquot and store at -20°C for 12 months.

Stability Test: The thermal stability is described by the loss rate. The loss rate was determined by accelerated thermal degradation test, that is, incubate the protein at 37°C for 48h, and no obvious degradation and precipitation were observed. The loss rate is less than 5% within the expiration date under appropriate storage condition.

[**IDENTIFICATION**]

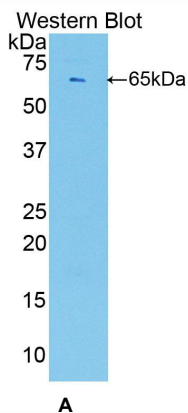


Figure 1. Western Blot

A. Sample: Recombinant PBRM1, Human