

PAC233Hu01

Polyclonal Antibody to Profilin 1 (PFN1)

Organism Species: *Homo sapiens* (Human)

Instruction manual

FOR RESEARCH USE ONLY

NOT FOR USE IN CLINICAL DIAGNOSTIC PROCEDURES

13th Edition (Revised in Aug, 2023)

[PROPERTIES]

Source: Polyclonal antibody preparation

Host: Rabbit

Purification: Antigen-specific affinity chromatography followed by Protein A affinity chromatography

Traits: Liquid

Concentration: 0.43mg/mL

UOM: 100µL

Cross Reactivity: Porcine

Applications: WB

[IMMUNOGEN]

Immunogen: Recombinant PFN1 (Met1~Gln139) expressed in *E.coli*

Accession No.: RPC233Hu01

[APPLICATIONS]

Western blotting: 0.01-2µg/mL

Optimal working dilutions must be determined by end user.

[FORMULATION]

Form & Buffer: Supplied as solution form in 0.01M PBS, pH7.4, containing 0.05% Proclin-300, 50% glycerol.

[STORAGE AND STABILITY]

Storage: Avoid repeated freeze/thaw cycles.

Store at 4°C for frequent use.

Aliquot and store at -20°C for 24 months.

Stability Test: The thermal stability is described by the loss rate. The loss rate was determined by accelerated thermal degradation test, that is, incubate the protein at 37°C for 48h, and no obvious degradation and precipitation were observed. The loss rate is less than 5% within the expiration date under appropriate storage condition.

[IDENTIFICATION]

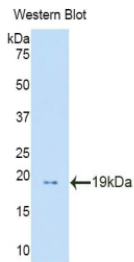
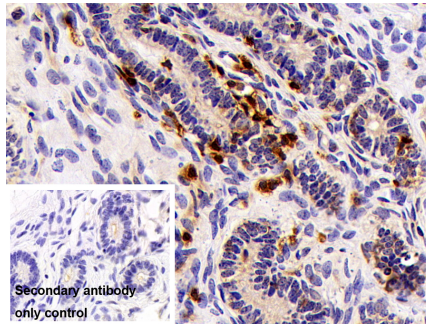
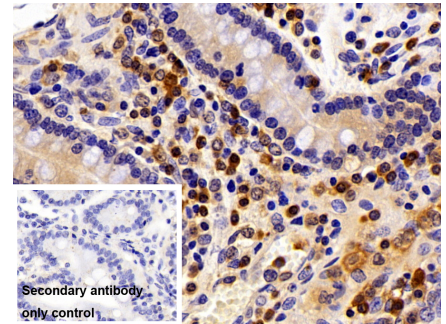


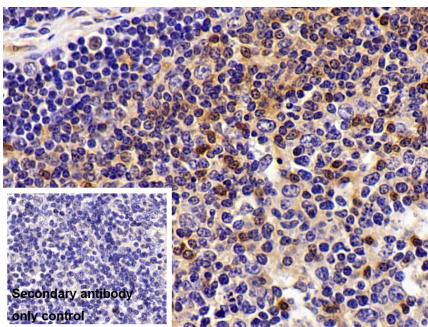
Figure. Western Blot; Sample: Recombinant PFN1, Human.



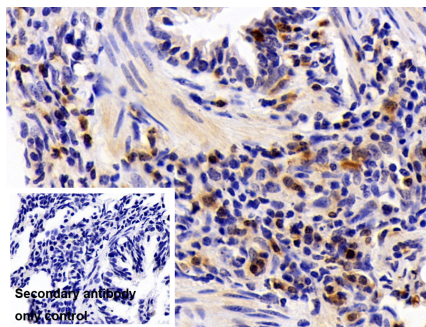
DAB staining on IHC-P; Sample: Porcine Uterus Tissue
 Primary Ab: 10µg/ml Rabbit Anti-Human PFN1
 Antibody Control: Used PBS instead of primary antibody
 Second Ab: 2?g/ml HRP-Linked Caprine Anti-Rabbit IgG Polyclonal Antibody (Catalog: SAA544Rb19)



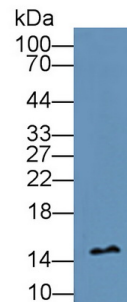
DAB staining on IHC-P; Sample: Porcine Small intestine Tissue
 Primary Ab: 10µg/ml Rabbit Anti-Human PFN1 Antibody
 Control: Used PBS instead of primary antibody
 Second Ab: 2?g/ml HRP-Linked Caprine Anti-Rabbit IgG Polyclonal Antibody (Catalog: SAA544Rb19)



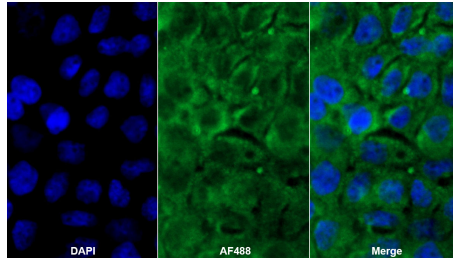
DAB staining on IHC-P; Sample: Porcine Lymph node Tissue
 Primary Ab: 10µg/ml Rabbit Anti-Human PFN1 Antibody
 Control: Used PBS instead of primary antibody
 Second Ab: 2?g/ml HRP-Linked Caprine Anti-Rabbit IgG Polyclonal Antibody (Catalog: SAA544Rb19)



DAB staining on IHC-P; Sample: Porcine Lung Tissue
 Primary Ab: 10µg/ml Rabbit Anti-Human PFN1 Antibody
 Control: Used PBS instead of primary antibody
 Second Ab: 2?g/ml HRP-Linked Caprine Anti-Rabbit IgG Polyclonal Antibody (Catalog: SAA544Rb19)



Western Blot; Sample: Human Liver lysate;
 Primary Ab: 2µg/ml Rabbit Anti-Human PFN1 Antibody
 Second Ab: 0.2µg/mL HRP-Linked Caprine Anti-Rabbit IgG Polyclonal Antibody (Catalog: SAA544Rb19)



AF488 staining on IF;

Sample: A431 cell

Primary Ab: 20µg/ml Rabbit Anti-

Human PFN1 Antibody

Second Ab: 2?g/ml AF488-Linked

Caprine Anti-Rabbit IgG Polyclonal

Antibody

(Catalog: SAA544Rb11)

Western Blot; Samples: Lane1: HepG2

cell lysate; Lane2: LO2 cell lysate;

Lane3: Rat Liver lysate; Lane4: Mouse

Liver lysate; Lane5: Porcine Liver

lysate;

Primary Ab: 0.1µg/ml Rabbit Anti-

Human PFN1 Antibody

Second Ab: 0.2?g/ml HRP-Linked

Caprine Anti-Rabbit IgG Polyclonal

Antibody

(Catalog: SAA544Rb19)

[**IMPORTANT NOTE**]

The kit is designed for research use only, we will not be responsible for any issue if the kit was used in clinical diagnostic or any other procedures.