

**PAA788Hu01**

**Polyclonal Antibody to Programmed Cell Death Protein 1 Ligand 1 (PDL1)**

**Organism Species: *Homo sapiens* (Human)**

***Instruction manual***

FOR RESEARCH USE ONLY

NOT FOR USE IN CLINICAL DIAGNOSTIC PROCEDURES

---

13th Edition (Revised in Aug, 2023)

**[ PROPERTIES ]**

**Source:** Polyclonal antibody preparation

**Host:** Rabbit

**Purification:** Antigen-specific affinity chromatography followed by Protein A affinity chromatography

**Traits:** Liquid

**Concentration:** 500µg/mL

**UOM:** 100µL

**Cross Reactivity:** Mouse; Rat; Porcine

**Applications:** WB; ICC/IF

**[ IMMUNOGEN ]**

**Immunogen:** Recombinant PDL1 (Pro24~Pro234) expressed in *E.coli*

**Accession No.:** RPA788Hu01

**[ APPLICATIONS ]**

Western blotting: 0.01-3µg/mL;

Immunocytochemistry: 5-30µg/mL;

Optimal working dilutions must be determined by end user.

**[ FORMULATION ]**

**Form & Buffer:** Supplied as solution form in 0.01M PBS, pH7.4, containing 0.05% Proclin-300, 50% glycerol.

**[ STORAGE AND STABILITY ]**

**Storage:** Avoid repeated freeze/thaw cycles.

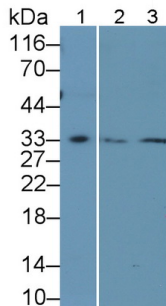
Store at 4°C for frequent use.

Aliquot and store at -20°C for 24 months.

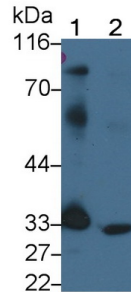
**Stability Test:** The thermal stability is described by the loss rate. The loss rate was determined by accelerated thermal degradation test, that is, incubate the protein at 37°C for 48h, and no obvious degradation and precipitation were observed. The loss rate is less than 5% within the

expiration date under appropriate storage condition.

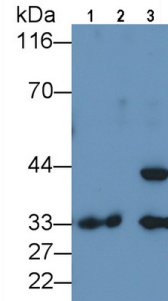
**[ IDENTIFICATION ]**



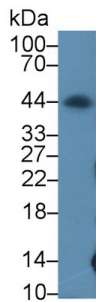
Western Blot; Sample: Lane1: Human Placenta lysate; Lane2: Rat Heart lysate; Lane3: Rat Skeletal muscle lysate  
 Primary Ab: 0.1µg/ml Rabbit Anti-Human PDCD1LG1 Antibody  
 Second Ab: 0.2µg/mL HRP-Linked Caprine Anti-Rabbit IgG Polyclonal Antibody  
 (Catalog: SAA544Rb19) Selected



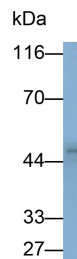
Western Blot; Sample: Lane1: Human Placenta lysate; Lane2: Mouse Heart lysate  
 Primary Ab: 2µg/ml Rabbit Anti-Human PDCD1LG1 Antibody  
 Second Ab: 0.2µg/mL HRP-Linked Caprine Anti-Rabbit IgG Polyclonal Antibody  
 (Catalog: SAA544Rb19) Selected



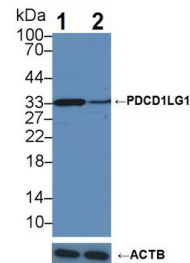
Western Blot; Sample: Lane1: Rat Heart lysate; Lane2: Mouse Heart lysate; Lane3: Porcine Heart lysate  
 Primary Ab: 0.5µg/ml Rabbit Anti-Human PDCD1LG1 Antibody  
 Second Ab: 0.2µg/mL HRP-Linked Caprine Anti-Rabbit IgG Polyclonal Antibody  
 (Catalog: SAA544Rb19) Selected



Western Blot; Sample: Porcine Skeletal muscle lysate;  
 Primary Ab: 3µg/ml Rabbit Anti-Human PDCD1LG1 Antibody  
 Second Ab: 0.2µg/mL HRP-Linked Caprine Anti-Rabbit IgG Polyclonal Antibody  
 (Catalog: SAA544Rb19) Selected

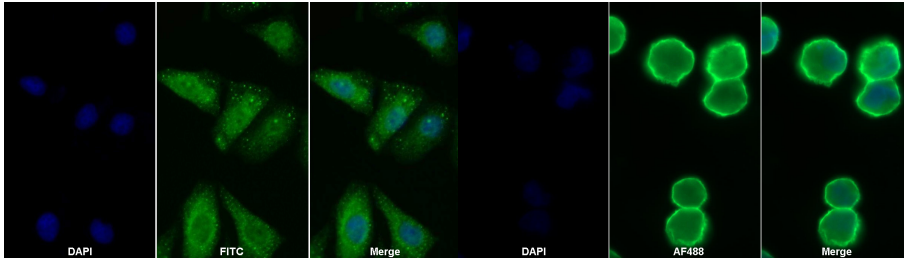


Western Blot; Sample: 293F cell lysate  
 Primary Ab: 0.3µg/ml Rabbit Anti-Human PDCD1LG1 Antibody  
 Second Ab: 0.2µg/ml HRP-Linked Caprine Anti-Rabbit IgG Polyclonal Antibody  
 (Catalog: SAA544Rb19)



Knockout Varification:  
 Lane 1: Wild-type MB231 cell lysate;  
 Lane 2: PDCD1LG1 knockout MB231 cell lysate;  
 Predicted MW: 33,20kDa  
 Observed MW: 33kDa  
 Primary Ab: 1µg/ml Rabbit Anti-Human PDCD1LG1 Antibody  
 Second Ab: 0.2µg/mL HRP-Linked Caprine Anti-Rabbit IgG Polyclonal

Antibody  
(Catalog: SAA544Rb19)



FITC staining on IF; Sample: Human Hela cell; Primary Ab: 20ug/ml Rabbit Anti-Human PDCD1LG1 Antibody  
Second Ab: 2µg/ml FITC-Linked Caprine Anti-Rabbit IgG Polyclonal Antibody (Catalog: SAA544Rb18)

AF488 staining on IF; Sample: 293F cell  
Primary Ab: 30µg/ml Rabbit Anti-Human PDCD1LG1 Antibody  
Second Ab: 2µg/ml AF488-Linked Caprine Anti-Rabbit IgG Polyclonal Antibody  
(Catalog: SAA544Rb11)

**[ IMPORTANT NOTE ]**

The kit is designed for research use only, we will not be responsible for any issue if the kit was used in clinical diagnostic or any other procedures.