

PAE254Hu01

Polyclonal Antibody to Prolyl-4-Hydroxylase Alpha Polypeptide II (P4Ha2)

Organism Species: *Homo sapiens* (Human)

Instruction manual

FOR RESEARCH USE ONLY

NOT FOR USE IN CLINICAL DIAGNOSTIC PROCEDURES

13th Edition (Revised in Aug, 2023)

[PROPERTIES]

Source: Polyclonal antibody preparation

Host: Rabbit

Purification: Antigen-specific affinity chromatography followed by Protein A affinity chromatography

Traits: Liquid

Concentration: 0.5mg/mL

UOM: 10 μ L

Cross Reactivity: Mouse;Rat

Applications: WB; IHC; ICC; IP.

[IMMUNOGEN]

Immunogen: Recombinant P4Ha2 (Ser27~Glu518) expressed in *E.coli*

Accession No.: RPE254Hu01

[APPLICATIONS]

Western blotting: 0.01-3 μ g/mL;

Immunohistochemistry: 5-30 μ g/mL;

Immunocytochemistry: 5-30 μ g/mL;

Optimal working dilutions must be determined by end user.

[FORMULATION]

Form & Buffer: Supplied as solution form in 0.01M PBS, pH7.4, containing 0.05% Proclin-300, 50% glycerol.

[STORAGE AND STABILITY]

Storage: Avoid repeated freeze/thaw cycles.

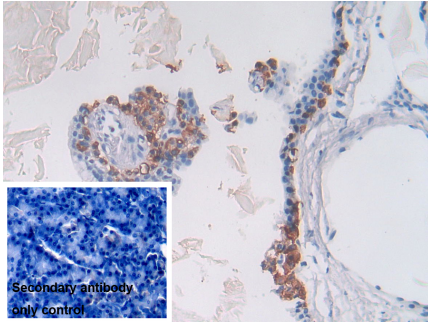
Store at 4°C for frequent use.

Aliquot and store at -20°C for 24 months.

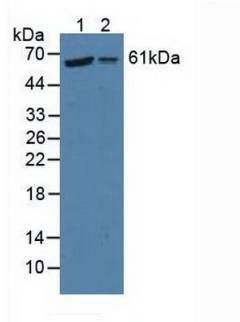
Stability Test: The thermal stability is described by the loss rate. The loss rate was determined by accelerated thermal degradation test, that is, incubate the protein at 37°C for 48h, and no

obvious degradation and precipitation were observed. The loss rate is less than 5% within the expiration date under appropriate storage condition.

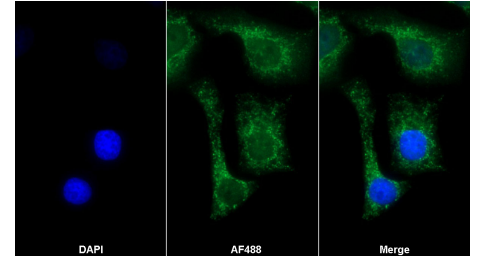
[IDENTIFICATION]



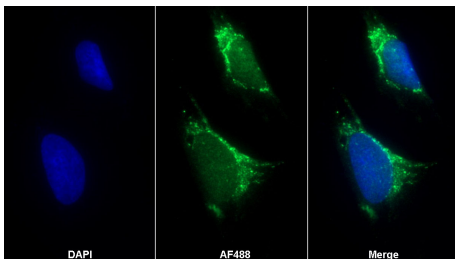
DAB staining on IHC-P;
 Samples: Human Pancreas Tissue;
 Primary Ab: 30µg/ml Rabbit Anti-Human P4Ha2 Antibody
 Second Ab: 2µg/mL HRP-Linked Caprine Anti-Rabbit IgG Polyclonal Antibody
 (Catalog: SAA544Rb19)



Western Blot; Samples: Lane1: Hela cell lysate; Lane2: 293T cell lysate;
 Primary Ab: 1µg/ml Rabbit Anti-Human P4Ha2 Antibody
 Second Ab: 0.2µg/ml HRP-Linked Caprine Anti-Rabbit IgG Polyclonal Antibody
 (Catalog: SAA544Rb19)



AF488 staining on IF;
 Sample: HeLa cell
 Primary Ab: 20µg/ml Rabbit Anti-Human P4Ha2 Antibody
 Second Ab: 2µg/ml AF488-Linked Caprine Anti-Rabbit IgG Polyclonal Antibody
 (Catalog: SAA544Rb11)



AF488 staining on IF;
 Sample: U2OS cell
 Primary Ab: 20µg/ml Rabbit Anti-Human P4Ha2 Antibody
 Second Ab: 2µg/ml AF488-Linked Caprine Anti-Rabbit IgG Polyclonal Antibody
 (Catalog: SAA544Rb11)

[IMPORTANT NOTE]

The kit is designed for research use only, we will not be responsible for any issue if the kit was used in clinical diagnostic or any other procedures.