

**PAC231Hu01**

**Polyclonal Antibody to Protein Kinase B Alpha (PKBa)**

**Organism Species: *Homo sapiens (Human)***

***Instruction manual***

FOR RESEARCH USE ONLY

NOT FOR USE IN CLINICAL DIAGNOSTIC PROCEDURES

---

13th Edition (Revised in Aug, 2023)

## **[ PROPERTIES ]**

**Source:** Polyclonal antibody preparation

**Host:** Rabbit

**Purification:** Antigen-specific affinity chromatography followed by Protein A affinity chromatography

**Traits:** Liquid

**Concentration:** 0.5mg/mL

**UOM:** 100µg(200µL)

**Cross Reactivity:** Mouse; Rat; Canine; Porcine; Bovine; Equine.

**Applications:** WB; IHC; ICC; IP.

## **[ IMMUNOGEN ]**

**Immunogen:** Recombinant PKBa (Ser122~Thr443) expressed in *E.coli*

**Accession No.:** RPC231Hu01

## **[ APPLICATIONS ]**

Western blotting: 0.01-3µg/mL;

Immunohistochemistry: 5-30µg/mL;

Immunocytochemistry: 5-30µg/mL;

Optimal working dilutions must be determined by end user.

## **[ FORMULATION ]**

**Form & Buffer:** Supplied as solution form in PBS, pH7.4, containing 0.02% NaN<sub>3</sub>, 50% glycerol.

## **[ STORAGE AND STABILITY ]**

**Storage:** Avoid repeated freeze/thaw cycles.

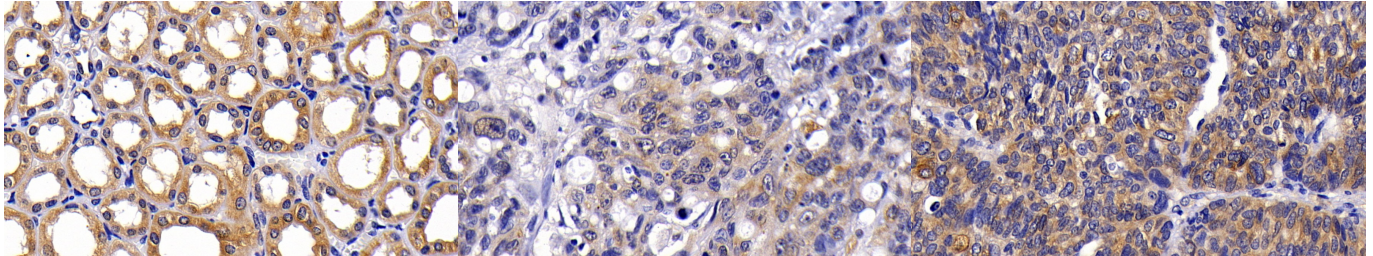
Store at 4°C for frequent use.

Aliquot and store at -20°C for 24 months.

**Stability Test:** The thermal stability is described by the loss rate. The loss rate was determined by accelerated thermal degradation test, that is, incubate the protein at 37°C for 48h, and no

obvious degradation and precipitation were observed. The loss rate is less than 5% within the expiration date under appropriate storage condition.

**[ IDENTIFICATION ]**



DAB staining on IHC-P;

Samples: Human Kidney Tissue;

Primary Ab: 30ug/ml Rabbit Anti-Human PKBa Antibody

Second Ab: 2µg/mL HRP-Linked Caprine Anti-Rabbit IgG Polyclonal Antibody

(Catalog: SAA544Rb19)

DAB staining on IHC-P;

Samples: Human Lymphoma Tissue;

Primary Ab: 30ug/ml Rabbit Anti-Human PKBa Antibody

Second Ab: 2µg/mL HRP-Linked Caprine Anti-Rabbit IgG Polyclonal Antibody

(Catalog: SAA544Rb19)

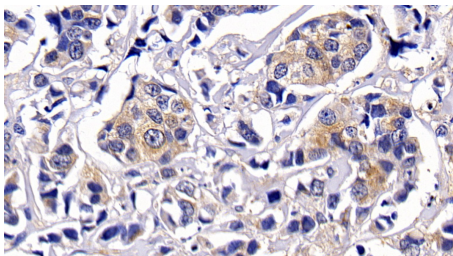
DAB staining on IHC-P;

Samples: Human Ovarian cancer Tissue;

Primary Ab: 30ug/ml Rabbit Anti-Human PKBa Antibody

Second Ab: 2µg/mL HRP-Linked Caprine Anti-Rabbit IgG Polyclonal Antibody

(Catalog: SAA544Rb19)



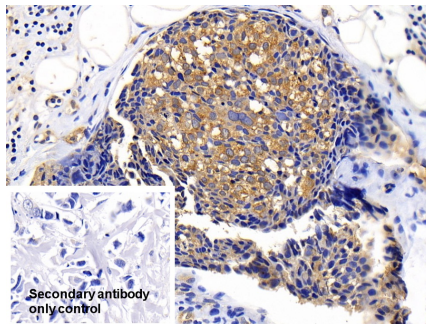
DAB staining on IHC-P;

Samples: Human Breast cancer Tissue;

Primary Ab: 30ug/ml Rabbit Anti-Human PKBa Antibody

Second Ab: 2µg/mL HRP-Linked Caprine Anti-Rabbit IgG Polyclonal Antibody

(Catalog: SAA544Rb19)



DAB staining on IHC-P;

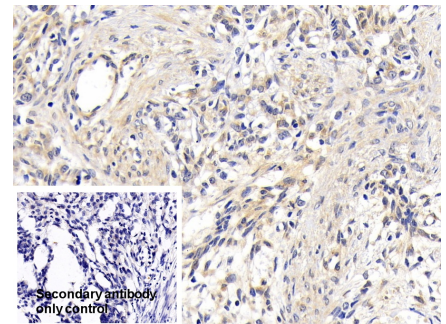
Sample: Human Breast cancer Tissue

Primary Ab: 20µg/ml Rabbit Anti-Human PKBa Antibody

Control: Used PBS instead of primary antibody

Second Ab: 2µg/ml HRP-Linked Caprine Anti-Rabbit IgG Polyclonal Antibody

(Catalog: SAA544Rb19)



DAB staining on IHC-P;

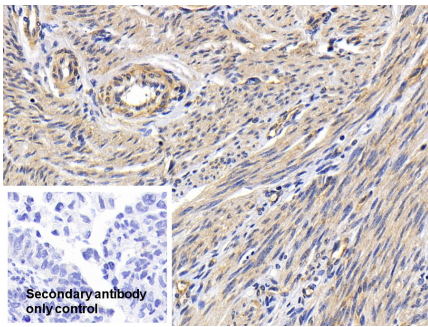
Sample: Human Ovarian cancer Tissue

Primary Ab: 20µg/ml Rabbit Anti-Human PKBa Antibody

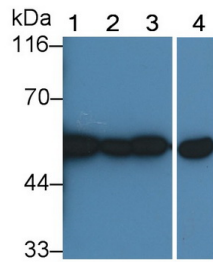
Control: Used PBS instead of primary antibody

Second Ab: 2µg/ml HRP-Linked Caprine Anti-Rabbit IgG Polyclonal Antibody

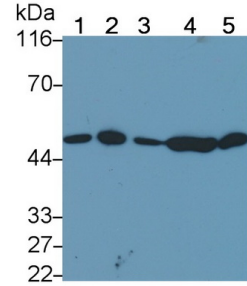
(Catalog: SAA544Rb19)



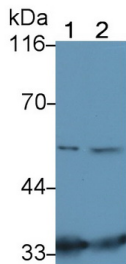
Sample: Human Endometrial cancer Tissue  
 Primary Ab: 20µg/ml Rabbit Anti-Human PKBa Antibody  
 Control: Used PBS instead of primary antibody  
 Second Ab: 2µg/ml HRP-Linked Caprine Anti-Rabbit IgG Polyclonal Antibody  
 (Catalog: SAA544Rb19)



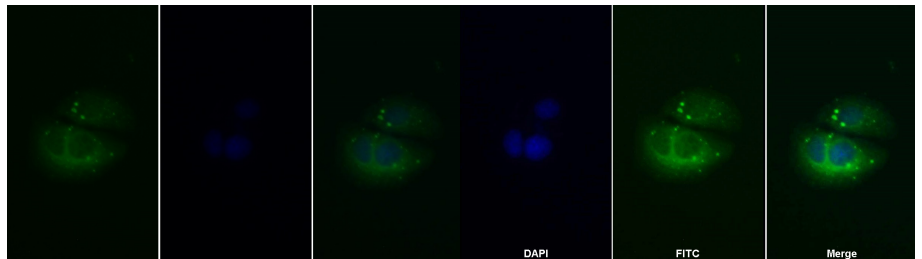
Western Blot; Sample: Lane1: Human Lung lysate; Lane2: Hela cell lysate; Lane3: MCF7 cell lysate; Lane4: Porcine Cerebrum lysate  
 Primary Ab: 0.5µg/ml Rabbit Anti-Human PKBa Antibody  
 Second Ab: 0.2µg/mL HRP-Linked Caprine Anti-Rabbit IgG Polyclonal Antibody  
 (Catalog: SAA544Rb19)



Western Blot; Sample: Lane1: Rat Cerebrum lysate; Lane2: Mouse Cerebrum lysate; Lane3: Bovine Cerebrum lysate; Lane4: Canine Cerebrum lysate; Lane5: Gallus Cerebrum lysate  
 Primary Ab: 0.05µg/ml Rabbit Anti-Human PKBa Antibody  
 Second Ab: 0.2µg/mL HRP-Linked Caprine Anti-Rabbit IgG Polyclonal Antibody  
 (Catalog: SAA544Rb19)



Western Blot; Sample: Lane1: HL60 cell lysate; Lane2: Porcine Lung lysate  
 Primary Ab: 0.4µg/ml Rabbit Anti-Human PKBa Antibody  
 Second Ab: 0.2µg/mL HRP-Linked Caprine Anti-Rabbit IgG Polyclonal Antibody  
 (Catalog: SAA544Rb19)



FITC staining on IF;  
 Sample: Human HeLa cell;  
 Primary Ab: 20µg/ml Rabbit Anti-Human PKBa Antibody  
 Second Ab: 1.5µg/ml FITC-Linked Caprine Anti-Rabbit IgG Polyclonal Antibody  
 (Catalog: SAA544Rb18)

FITC staining on IF;  
 Sample: HeLa cell  
 Primary Ab: 20µg/ml Rabbit Anti-Human PKBa Antibody  
 Second Ab: 2µg/ml FITC-Linked Caprine Anti-Rabbit IgG Polyclonal Antibody  
 (Catalog: SAA544Rb11)

**[ IMPORTANT NOTE ]**

The kit is designed for research use only, we will not be responsible for any issue if the kit was used in clinical diagnostic or any other procedures.