

PAB030Hu01

Polyclonal Antibody to Protein Tyrosine Phosphatase Receptor Type C (CD45)

Organism Species: *Homo sapiens (Human)*

Instruction manual

FOR RESEARCH USE ONLY

NOT FOR USE IN CLINICAL DIAGNOSTIC PROCEDURES

13th Edition (Revised in Aug, 2023)

[PROPERTIES]

Source: Polyclonal antibody preparation

Host: Rabbit

Purification: Antigen-specific affinity chromatography followed by Protein A affinity chromatography

Traits: Liquid

Concentration: 0.5mg/mL

UOM: 10 μ L

Cross Reactivity: N/A

Applications: WB; IHC; ICC; IP.

[IMMUNOGEN]

Immunogen: Recombinant CD45 (Asp193~Lys575) expressed in *E.coli*

Accession No.: RPB030Hu01

[APPLICATIONS]

Western blotting: 0.01-2 μ g/mL;

Immunohistochemistry: 5-20 μ g/mL;

Immunofluorescence: 5-30 μ g/mL;

Optimal working dilutions must be determined by end user.

[FORMULATION]

Form & Buffer: Supplied as solution form in 0.01M PBS, pH7.4, containing 0.05% Proclin-300, 50% glycerol.

[STORAGE AND STABILITY]

Storage: Avoid repeated freeze/thaw cycles.

Store at 4°C for frequent use.

Aliquot and store at -20°C for 24 months.

Stability Test: The thermal stability is described by the loss rate. The loss rate was determined by accelerated thermal degradation test, that is, incubate the protein at 37°C for 48h, and no

obvious degradation and precipitation were observed. The loss rate is less than 5% within the expiration date under appropriate storage condition.

[IDENTIFICATION]

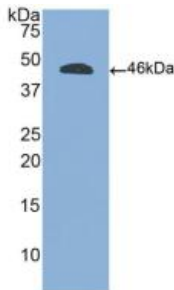
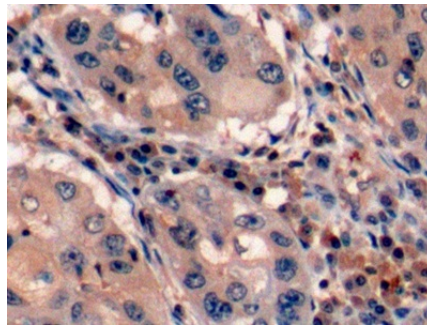
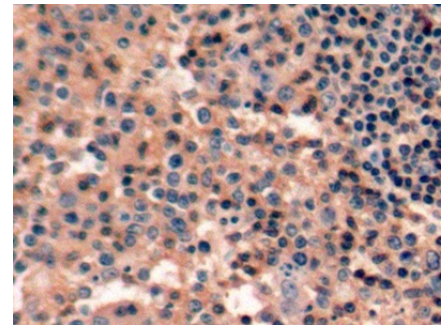


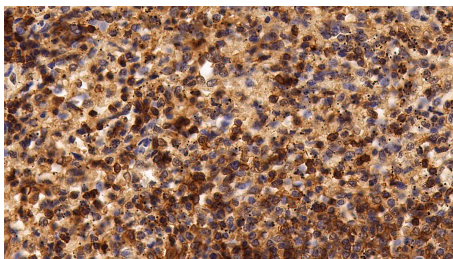
Figure. Western Blot; Sample: Recombinant CD45, Human.



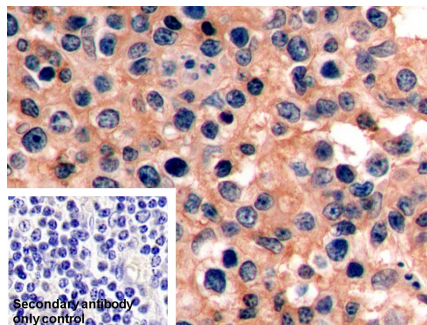
DAB staining on IHC-P; Samples: Human Lymphoma Tissue; Primary Ab: 10µg/ml Rabbit Anti-Human PTPRC Antibody Second Ab: 2µg/mL HRP-Linked Caprine Anti-Rabbit IgG Polyclonal Antibody (Catalog: SAA544Rb19)



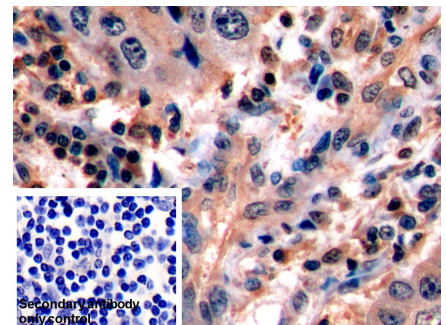
DAB staining on IHC-P; Samples: Human Tonsil Tissue; Primary Ab: 10µg/ml Rabbit Anti-Human PTPRC Antibody Second Ab: 2µg/mL HRP-Linked Caprine Anti-Rabbit IgG Polyclonal Antibody (Catalog: SAA544Rb19)



DAB staining on IHC-P; Sample: Human Spleen Tissue; Primary Ab: 20µg/ml Rabbit Anti-Human PTPRC Antibody Second Ab: 2µg/mL HRP-Linked Caprine Anti-Rabbit IgG Polyclonal Antibody (Catalog: SAA544Rb19)

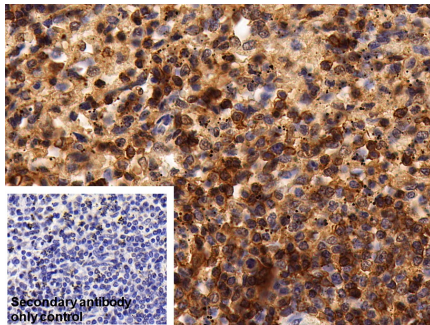


DAB staining on IHC-P; Sample: Human Tonsil Tissue Primary Ab: 10µg/ml Rabbit Anti-Human PTPRC Antibody Control: Used PBS instead of primary antibody Second Ab: 2µg/ml HRP-Linked Caprine Anti-Rabbit IgG Polyclonal Antibody

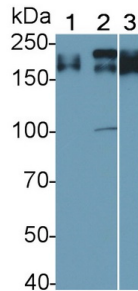


DAB staining on IHC-P; Sample: Human Lymphoma Tissue Primary Ab: 10µg/ml Rabbit Anti-Human PTPRC Antibody Control: Used PBS instead of primary antibody Second Ab: 2µg/ml HRP-Linked Caprine Anti-Rabbit IgG Polyclonal Antibody

(Catalog: SAA544Rb19)

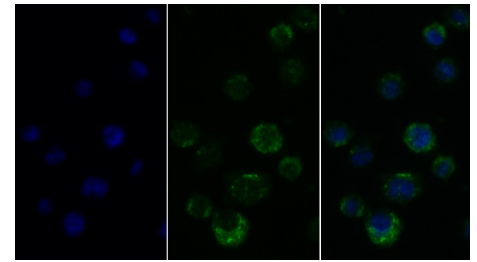


DAB staining on IHC-P;
 Sample: Human Spleen Tissue
 Primary Ab: 20µg/ml Rabbit Anti-Human PTPRC Antibody
 Control: Used PBS instead of primary antibody
 Second Ab: 2µg/ml HRP-Linked Caprine Anti-Rabbit IgG Polyclonal Antibody
 (Catalog: SAA544Rb19)

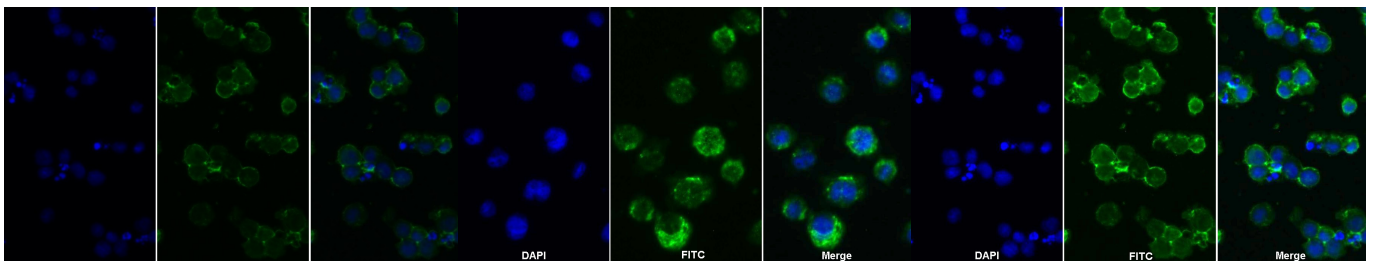


Western Blot; Sample: Lane1: THP1 cell lysate; Lane2: Raji cell lysate; Lane3: Jurkat cell lysate
 Primary Ab: 0.2µg/ml Rabbit Anti-Human PTPRC Antibody
 Second Ab: 0.2µg/mL HRP-Linked Caprine Anti-Rabbit IgG Polyclonal Antibody
 (Catalog: SAA544Rb19)

(Catalog: SAA544Rb19)



FITC staining on IF;
 Sample: Human THP1 cell;
 Primary Ab: 30ug/ml Rabbit Anti-Human PTPRC Antibody
 Second Ab: 2µg/ml FITC-Linked Caprine Anti-Rabbit IgG Polyclonal Antibody
 (Catalog: SAA544Rb18)



FITC staining on IF;
 Sample: Human Jurkat cell;
 Primary Ab: 30ug/ml Rabbit Anti-Human PTPRC Antibody
 Second Ab: 2µg/ml FITC-Linked Caprine Anti-Rabbit IgG Polyclonal Antibody
 (Catalog: SAA544Rb18)

FITC staining on IF;
 Sample: THP1 cell
 Primary Ab: 30µg/ml Rabbit Anti-Human PTPRC Antibody
 Second Ab: 2µg/ml FITC-Linked Caprine Anti-Rabbit IgG Polyclonal Antibody
 (Catalog: SAA544Rb11)

FITC staining on IF;
 Sample: Jurkat cell
 Primary Ab: 30µg/ml Rabbit Anti-Human PTPRC Antibody
 Second Ab: 2µg/ml FITC-Linked Caprine Anti-Rabbit IgG Polyclonal Antibody
 (Catalog: SAA544Rb11)

[IMPORTANT NOTE]

The kit is designed for research use only, we will not be responsible for any issue if the kit was used in clinical diagnostic or any other procedures.