

PAA588Hu02

Polyclonal Antibody to Pyruvate kinase isozymes M2 (PKM2)

Organism Species: *Homo sapiens (Human)*

Instruction manual

FOR RESEARCH USE ONLY

NOT FOR USE IN CLINICAL DIAGNOSTIC PROCEDURES

13th Edition (Revised in Aug, 2023)

[PROPERTIES]

Source: Polyclonal antibody preparation

Host: Rabbit

Purification: Antigen-specific affinity chromatography followed by Protein A affinity chromatography

Traits: Liquid

Concentration: 0.5mg/ml

UOM: 100µl

Cross Reactivity: Mouse

Applications: WB; IHC; IF;FCM

[IMMUNOGEN]

Immunogen: Recombinant PKM2 (Arg294~Phe470) expressed in *E.coli*

Accession No.: RPA588Hu02

[APPLICATIONS]

Western blotting: 0.01-2µg/mL;

Immunohistochemistry: 5-20µg/mL;

Immunocytochemistry: 5-20µg/mL;

Optimal working dilutions must be determined by end user.

[FORMULATION]

Form & Buffer: Supplied as solution form in 0.01M PBS, pH7.4, containing 0.05% Proclin-300, 50% glycerol.

[STORAGE AND STABILITY]

Storage: Avoid repeated freeze/thaw cycles.

Store at 4°C for frequent use.

Aliquot and store at -20°C for 24 months.

Stability Test: The thermal stability is described by the loss rate. The loss rate was determined by accelerated thermal degradation test, that is, incubate the protein at 37°C for 48h, and no

obvious degradation and precipitation were observed. The loss rate is less than 5% within the expiration date under appropriate storage condition.

[IDENTIFICATION]

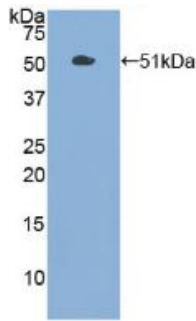
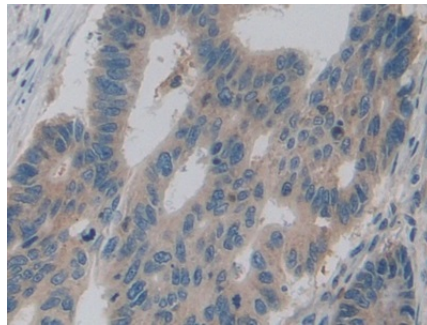
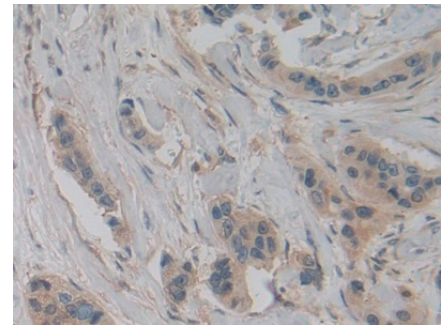


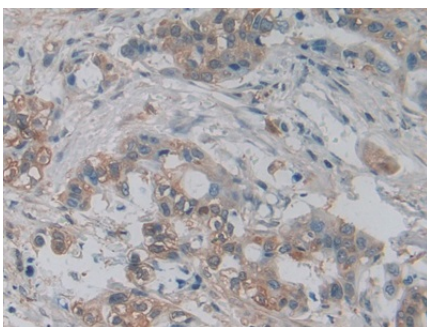
Figure. Western Blot; Sample: Recombinant PKM2, Human.



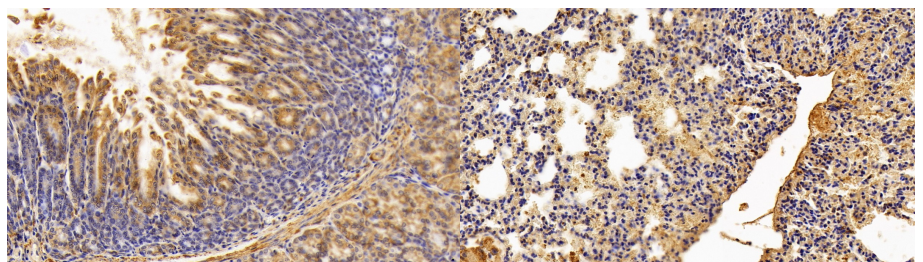
DAB staining on IHC-P;
Samples: Human Colorectal cancer Tissue;
Primary Ab: 10µg/ml Rabbit Anti-Human PKM2 Antibody
Second Ab: 2µg/mL HRP-Linked Caprine Anti-Rabbit IgG Polyclonal Antibody
(Catalog: SAA544Rb19)



DAB staining on IHC-P;
Samples: Human Breast cancer Tissue;
Primary Ab: 10µg/ml Rabbit Anti-Human PKM2 Antibody
Second Ab: 2µg/mL HRP-Linked Caprine Anti-Rabbit IgG Polyclonal Antibody
(Catalog: SAA544Rb19)



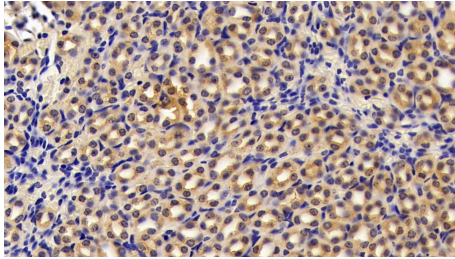
DAB staining on IHC-P;
Samples: Human Pancreatic cancer Tissue;
Primary Ab: 10µg/ml Rabbit Anti-Human PKM2 Antibody
Second Ab: 2µg/mL HRP-Linked Caprine Anti-Rabbit IgG Polyclonal Antibody



DAB staining on IHC-P;
Sample: Mouse Colon Tissue;
Primary Ab: 20ug/ml Rabbit Anti-Human PKM2 Antibody
Second Ab: 2µg/mL HRP-Linked Caprine Anti-Rabbit IgG Polyclonal Antibody
(Catalog: SAA544Rb19)

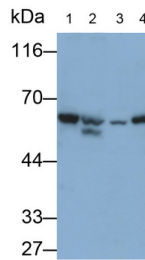
DAB staining on IHC-P;
Sample: Mouse Lung Tissue;
Primary Ab: 20ug/ml Rabbit Anti-Human PKM2 Antibody
Second Ab: 2µg/mL HRP-Linked Caprine Anti-Rabbit IgG Polyclonal Antibody
(Catalog: SAA544Rb19)

(Catalog: SAA544Rb19)

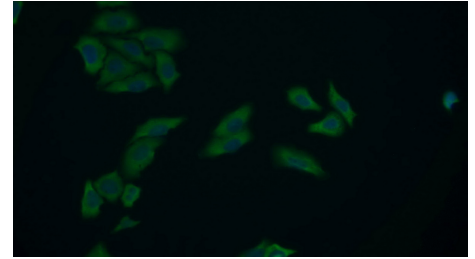


DAB staining on IHC-P;

Sample: Mouse Kidney Tissue;
 Primary Ab: 20ug/ml Rabbit Anti-Human PKM2 Antibody
 Second Ab: 2µg/mL HRP-Linked Caprine Anti-Rabbit IgG Polyclonal Antibody
 (Catalog: SAA544Rb19)

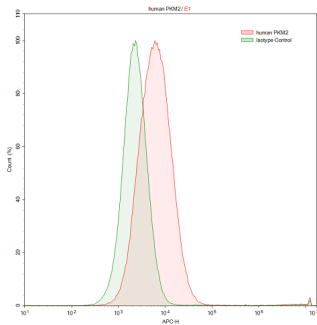


Western Blot; Sample: Lane1: HeLa cell lysate; Lane2: HepG2 cell lysate; Lane3: K562 cell lysate; Lane4: MCF7 cell lysate
 Primary Ab: 0.4µg/ml Rabbit Anti-Human PKM2 Antibody
 Second Ab: 0.2µg/mL HRP-Linked Caprine Anti-Rabbit IgG Polyclonal Antibody
 (Catalog: SAA544Rb19)



FITC staining on IF;

Samples: Human MCF7 cell;
 Primary Ab: 20?g/ml Rabbit Anti-Human PKM2 Antibody
 Second Ab: 1.5?g/ml FITC-Linked Caprine Anti-Rabbit IgG Polyclonal Antibody
 (Catalog: SAA544Rb18)



HepG2 human hepatocellular carcinoma cell line was stained with rabbit Anti-human PKM2 Polyclonal Antibody (Catalog # PAA588Hu02, filled red histogram) or Isotype control antibody (Catalog # IS067-Rb01, filled green histogram), followed by APC-conjugated Anti-rabbit IgG Secondary Antibody (Catalog # SAA544Rb15).

Cells were fixed with 4%

paraformaldehyde and permeabilized
with 0.1% Triton X-100.

[IMPORTANT NOTE]

The kit is designed for research use only, we will not be responsible for any issue if the kit was used in clinical diagnostic or any other procedures.