

**PAB080Bo01**

**Polyclonal Antibody to S100 Calcium Binding Protein A12 (S100A12)**

**Organism Species: *Bos taurus*; Bovine (Cattle)**

***Instruction manual***

FOR RESEARCH USE ONLY

NOT FOR USE IN CLINICAL DIAGNOSTIC PROCEDURES

---

13th Edition (Revised in Aug, 2023)

### **[ PROPERTIES ]**

**Source:** Polyclonal antibody preparation

**Host:** Rabbit

**Purification:** Antigen-specific affinity chromatography followed by Protein A affinity chromatography

**Traits:** Liquid

**Concentration:** 0.5mg/ml

**UOM:** 50µl

**Cross Reactivity:** Human;Mouse;Rat;Porcine

**Applications:** WB; IHC; ICC; IP.

### **[ IMMUNOGEN ]**

**Immunogen:** Recombinant S100A12 (Thr2~Glu92) expressed in *E.coli*

**Accession No.:** RPB080Bo01

### **[ APPLICATIONS ]**

Western blotting: 0.01-2µg/mL;

Immunohistochemistry: 5-20µg/mL;

Immunocytochemistry: 5-20µg/mL;

Optimal working dilutions must be determined by end user.

### **[ FORMULATION ]**

**Form & Buffer:** Supplied as solution form in 0.01M PBS, pH7.4, containing 0.05% Proclin-300, 50% glycerol.

### **[ STORAGE AND STABILITY ]**

**Storage:** Avoid repeated freeze/thaw cycles.

Store at 4°C for frequent use.

Aliquot and store at -20°C for 24 months.

**Stability Test:** The thermal stability is described by the loss rate. The loss rate was determined by accelerated thermal degradation test, that is, incubate the protein at 37°C for 48h, and no

obvious degradation and precipitation were observed. The loss rate is less than 5% within the expiration date under appropriate storage condition.

**[ IDENTIFICATION ]**

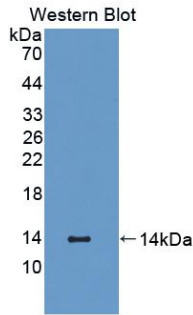
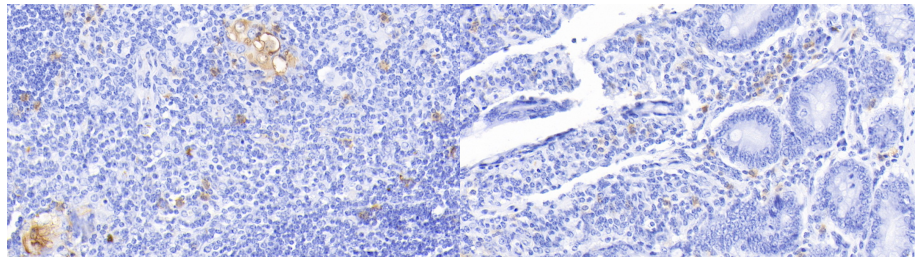
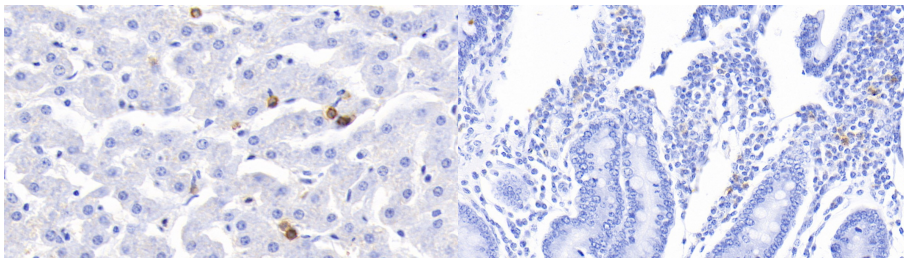


Figure. Western Blot; Sample: Recombinant S100A12, Cattle.



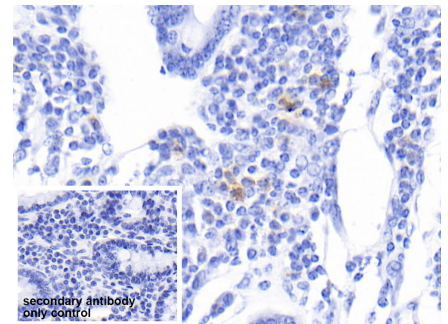
DAB staining on IHC-P; Samples: Bovine Thymus Tissue; Primary Ab: 20?g/ml Rabbit Anti-Bovine S100A12 Antibody Second Ab: 2µg/mL HRP-Linked Caprine Anti-Rabbit IgG Polyclonal Antibody (Catalog: SAA544Rb19)

DAB staining on IHC-P; Samples: Bovine Small intestine Tissue; Primary Ab: 20?g/ml Rabbit Anti-Bovine S100A12 Antibody Second Ab: 2µg/mL HRP-Linked Caprine Anti-Rabbit IgG Polyclonal Antibody (Catalog: SAA544Rb19)

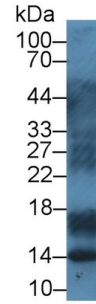
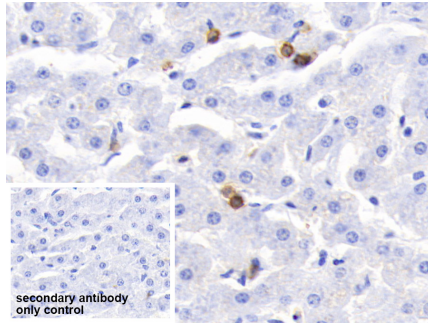
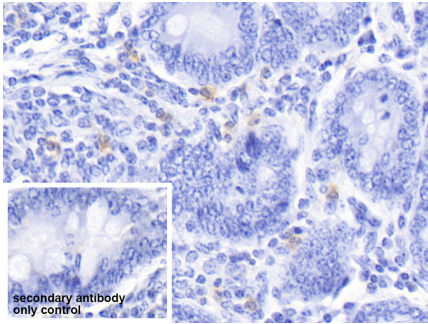


DAB staining on IHC-P; Samples: Bovine Liver Tissue; Primary Ab: 20?g/ml Rabbit Anti-Bovine S100A12 Antibody Second Ab: 2µg/mL HRP-Linked Caprine Anti-Rabbit IgG Polyclonal Antibody (Catalog: SAA544Rb19)

DAB staining on IHC-P; Samples: Bovine Colon Tissue; Primary Ab: 20?g/ml Rabbit Anti-Bovine S100A12 Antibody Second Ab: 2µg/mL HRP-Linked Caprine Anti-Rabbit IgG Polyclonal Antibody (Catalog: SAA544Rb19)



DAB staining on IHC-P; Sample: Bovine Colon Tissue Primary Ab: 20µg/ml Rabbit Anti-Bovine S100A12 Antibody Control: Used PBS instead of primary antibody Second Ab: 2µg/ml HRP-Linked Caprine Anti-Rabbit IgG Polyclonal Antibody (Catalog: SAA544Rb19)



DAB staining on IHC-P;

DAB staining on IHC-P;

Western Blot; Sample: Porcine Lymph

Sample: Bovine Small intestine Tissue

Sample: Bovine Liver Tissue

node lysate;

Primary Ab: 20µg/ml Rabbit Anti-Bovine S100A12 Antibody

Primary Ab: 20µg/ml Rabbit Anti-Bovine S100A12 Antibody

Primary Ab: 1µg/ml Rabbit Anti-Bovine S100A12 Antibody

Control: Used PBS instead of primary antibody

Control: Used PBS instead of primary antibody

Second Ab: 0.2µg/mL HRP-Linked Caprine Anti-Rabbit IgG Polyclonal

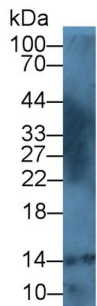
Second Ab: 2µg/ml HRP-Linked Caprine Anti-Rabbit IgG Polyclonal

Second Ab: 2µg/ml HRP-Linked Caprine Anti-Rabbit IgG Polyclonal

Antibody (Catalog: SAA544Rb19)

Antibody (Catalog: SAA544Rb19)

Antibody (Catalog: SAA544Rb19)



Western Blot; Sample: Human

Leukocyte lysate;

Primary Ab: 1µg/ml Rabbit Anti-Bovine S100A12 Antibody

Second Ab: 0.2µg/mL HRP-Linked Caprine Anti-Rabbit IgG Polyclonal

Antibody (Catalog: SAA544Rb19)

**[ IMPORTANT NOTE ]**

The kit is designed for research use only, we will not be responsible for any issue if the kit was used in clinical diagnostic or any other procedures.