

PAB769Hu01

Polyclonal Antibody to S100 Calcium Binding Protein A6 (S100A6)

Organism Species: *Homo sapiens (Human)*

Instruction manual

FOR RESEARCH USE ONLY

NOT FOR USE IN CLINICAL DIAGNOSTIC PROCEDURES

13th Edition (Revised in Aug, 2023)

[**PROPERTIES**]

Source: Polyclonal antibody preparation

Host: Rabbit

Purification: Antigen-specific affinity chromatography followed by Protein A affinity chromatography

Traits: Liquid

Concentration: 0.5mg/mL

UOM: 100µl

Cross Reactivity: N/A

Applications: WB,IHC,ICC/IF

[**IMMUNOGEN**]

Immunogen: Recombinant S100A6 (Met1~Gly90) expressed in *E.coli*

Accession No.: RPB769Hu01

[**APPLICATIONS**]

Western blotting: 0.01-2µg/mL

Immunohistochemistry: 5-20µg/mL

Immunocytochemistry: 5-20µg/mL

Optimal working dilutions must be determined by end user.

[**FORMULATION**]

Form & Buffer: Supplied as solution form in 0.01M PBS, pH7.4, containing 0.05% Proclin-300, 50% glycerol.

[**STORAGE AND STABILITY**]

Storage: Avoid repeated freeze/thaw cycles.

Store at 4°C for frequent use.

Aliquot and store at -20°C for 24 months.

Stability Test: The thermal stability is described by the loss rate. The loss rate was determined by accelerated thermal degradation test, that is, incubate the protein at 37°C for 48h, and no

obvious degradation and precipitation were observed. The loss rate is less than 5% within the expiration date under appropriate storage condition.

[IDENTIFICATION]

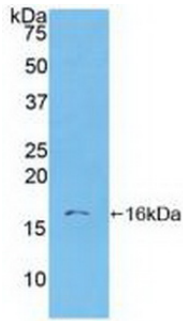
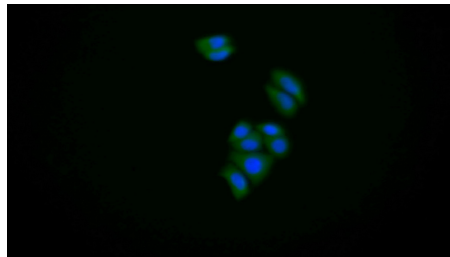
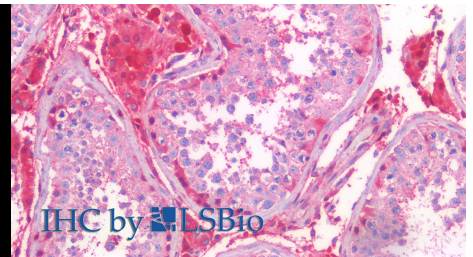


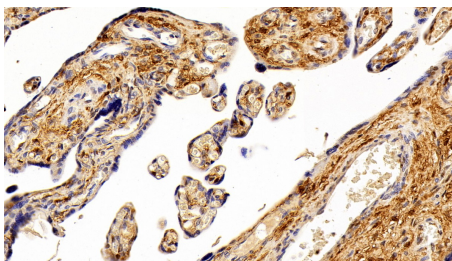
Figure. Western Blot; Sample: Recombinant S100A6, Human.



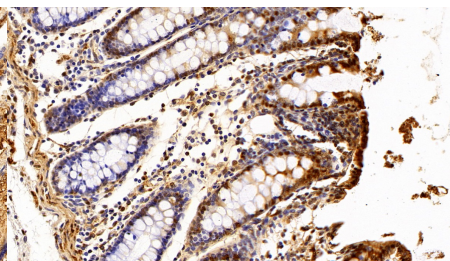
FITC staining on IF; Samples: Human MCF7 cell; Primary Ab: 20µg/ml Rabbit Anti-Human S100A6 Antibody Second Ab: 1.5µg/ml FITC-Linked Caprine Anti-Rabbit IgG Polyclonal Antibody (Catalog: SAA544Rb18)



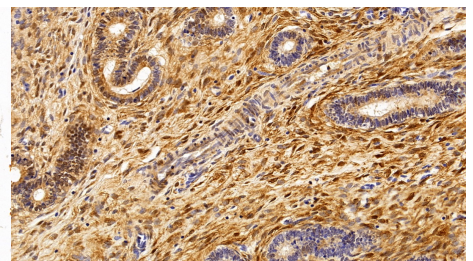
Vector Red staining on IHC-P; Samples: Human Testis Tissue; Primary Ab: 10µg/ml Rabbit Anti-Human S100A6 Antibody Second Ab: 2µg/mL HRP-Linked Caprine Anti-Rabbit IgG Polyclonal Antibody



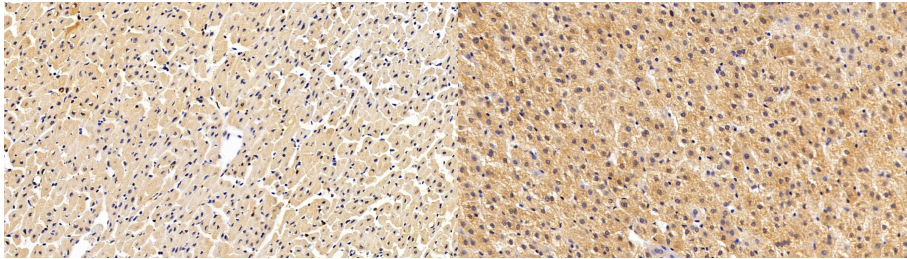
DAB staining on IHC-P; Sample: Porcine Placenta Tissue; Primary Ab: 20ug/ml Rabbit Anti-Human S100A6 Antibody Second Ab: 2µg/mL HRP-Linked Caprine Anti-Rabbit IgG Polyclonal Antibody (Catalog: SAA544Rb19)



DAB staining on IHC-P; Sample: Porcine Colon Tissue; Primary Ab: 20ug/ml Rabbit Anti-Human S100A6 Antibody Second Ab: 2µg/mL HRP-Linked Caprine Anti-Rabbit IgG Polyclonal Antibody (Catalog: SAA544Rb19)



DAB staining on IHC-P; Sample: Porcine Uterus Tissue; Primary Ab: 20ug/ml Rabbit Anti-Human S100A6 Antibody Second Ab: 2µg/mL HRP-Linked Caprine Anti-Rabbit IgG Polyclonal Antibody (Catalog: SAA544Rb19)



DAB staining on IHC-P;

Sample: Porcine Cardiac Muscle Tissue;

Primary Ab: 20ug/ml Rabbit Anti-Human S100A6 Antibody

Second Ab: 2µg/mL HRP-Linked Caprine Anti-Rabbit IgG Polyclonal Antibody

(Catalog: SAA544Rb19)

DAB staining on IHC-P;

Sample: Porcine Liver Tissue;

Primary Ab: 20ug/ml Rabbit Anti-Human S100A6 Antibody

Second Ab: 2µg/mL HRP-Linked Caprine Anti-Rabbit IgG Polyclonal Antibody

(Catalog: SAA544Rb19)

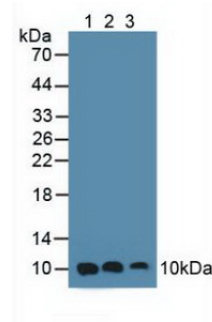
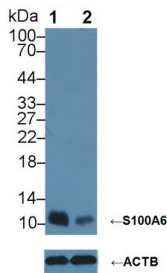


Figure. Western Blot; Sample: Lane1: Human HeLa Cells; Lane2: Human A549 Cells; Lane3: Human MCF7 Cells.



Knockout Verification:

Lane 1: Wild-type HeLa cell lysate;
Lane 2: S100A6 knockout HeLa cell lysate;

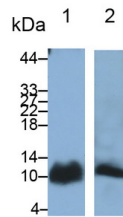
Predicted MW: 10kDa

Observed MW: 10kDa

Primary Ab: 4µg/ml Rabbit Anti-Human S100A6 Antibody

Second Ab: 0.2µg/mL HRP-Linked Caprine Anti-Rabbit IgG Polyclonal Antibody

(Catalog: SAA544Rb19)



Western Blot; Sample: Lane1: Human Placenta lysate; Lane2: HeLa cell lysate

Primary Ab: 0.5µg/ml Rabbit Anti-Human S100A6 Antibody

Second Ab: 0.2µg/mL HRP-Linked Caprine Anti-Rabbit IgG Polyclonal Antibody

(Catalog: SAA544Rb19)

[IMPORTANT NOTE]

The kit is designed for research use only, we will not be responsible for any issue if the kit was used in clinical diagnostic or any other procedures.