

**PAC054Hu01**

**Polyclonal Antibody to S100 Calcium Binding Protein P (S100P)**

**Organism Species: *Homo sapiens (Human)***

***Instruction manual***

FOR RESEARCH USE ONLY

NOT FOR USE IN CLINICAL DIAGNOSTIC PROCEDURES

---

13th Edition (Revised in Aug, 2023)

**[ PROPERTIES ]**

**Source:** Polyclonal antibody preparation

**Host:** Rabbit

**Purification:** Antigen-specific affinity chromatography followed by Protein A affinity chromatography

**Traits:** Liquid

**Concentration:** 0.5mg/ml

**UOM:** 100µl

**Cross Reactivity:** N/A

**Applications:** WB; IHC; IF

**[ IMMUNOGEN ]**

**Immunogen:** Recombinant S100P (Met1~Lys95) expressed in *E.coli*

**Accession No.:** RPC054Hu01

**[ APPLICATIONS ]**

Western blotting: 0.01-2µg/mL;

Immunohistochemistry: 5-20µg/mL;

Immunofluorescence:5-20µg/mL;

Optimal working dilutions must be determined by end user.

**[ FORMULATION ]**

**Form & Buffer:** Supplied as solution form in PBS, pH7.4, containing 0.02% NaN<sub>3</sub>, 50% glycerol.

**[ STORAGE AND STABILITY ]**

**Storage:** Avoid repeated freeze/thaw cycles.

Store at 4°C for frequent use.

Aliquot and store at -20°C for 24 months.

**Stability Test:** The thermal stability is described by the loss rate. The loss rate was determined by accelerated thermal degradation test, that is, incubate the protein at 37°C for 48h, and no

obvious degradation and precipitation were observed. The loss rate is less than 5% within the expiration date under appropriate storage condition.

**[ IDENTIFICATION ]**

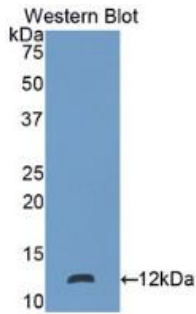
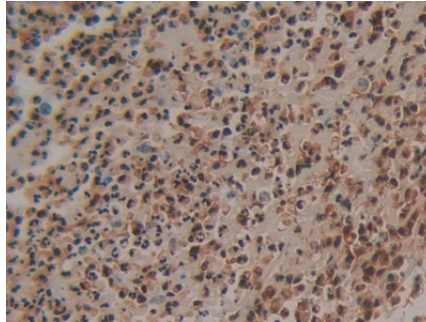
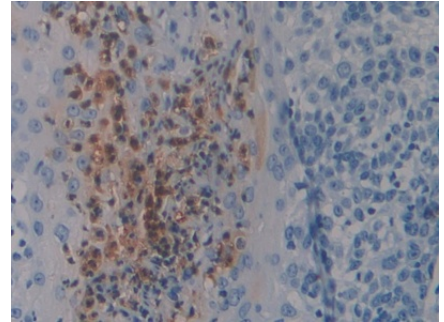


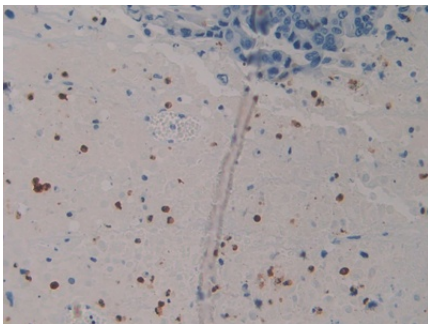
Figure. Western Blot; Sample:  
Recombinant S100P, Human.



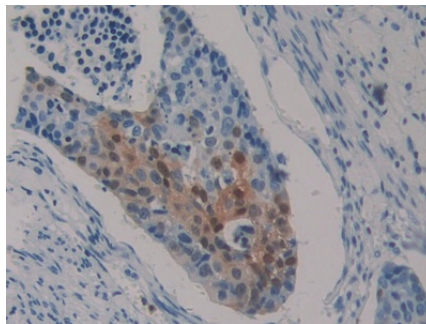
DAB staining on IHC-P;  
Samples: Human Colorectal cancer  
Tissue;  
Primary Ab: 20µg/ml Rabbit Anti-  
Human S100P Antibody  
Second Ab: 2µg/mL HRP-Linked  
Caprine Anti-Rabbit IgG Polyclonal  
Antibody  
(Catalog: SAA544Rb19)



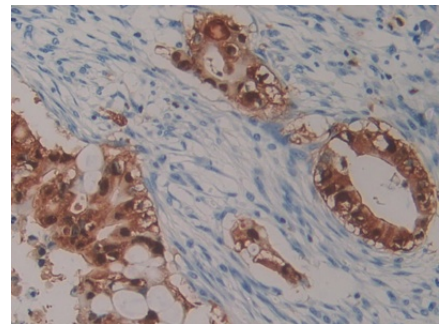
DAB staining on IHC-P;  
Samples: Human Skin cancer Tissue;  
Primary Ab: 20µg/ml Rabbit Anti-  
Human S100P Antibody  
Second Ab: 2µg/mL HRP-Linked  
Caprine Anti-Rabbit IgG Polyclonal  
Antibody  
(Catalog: SAA544Rb19)



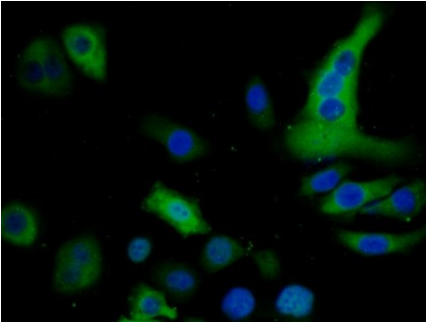
DAB staining on IHC-P;  
Samples: Human Breast cancer Tissue;  
Primary Ab: 20µg/ml Rabbit Anti-  
Human S100P Antibody  
Second Ab: 2µg/mL HRP-Linked  
Caprine Anti-Rabbit IgG Polyclonal  
Antibody  
(Catalog: SAA544Rb19)



DAB staining on IHC-P;  
Samples: Human Lung Tissue;  
Primary Ab: 20µg/ml Rabbit Anti-  
Human S100P Antibody  
Second Ab: 2µg/mL HRP-Linked  
Caprine Anti-Rabbit IgG Polyclonal  
Antibody  
(Catalog: SAA544Rb19)



DAB staining on IHC-P;  
Samples: Human Bile duct cancer  
Tissue;  
Primary Ab: 20µg/ml Rabbit Anti-  
Human S100P Antibody  
Second Ab: 2µg/mL HRP-Linked  
Caprine Anti-Rabbit IgG Polyclonal  
Antibody



FITC staining on IF;

Samples: Human HepG2 Cells;

Primary Ab: 10µg/ml Rabbit Anti-  
Human S100P Antibody

Second Ab: 1µg/ml FITC-Linked  
Caprine Anti-Rabbit IgG Polyclonal  
Antibody

(Catalog: SAA544Rb18)

**[ IMPORTANT NOTE ]**

The kit is designed for research use only, we will not be responsible for any issue if the kit was used in clinical diagnostic or any other procedures.