

**PAE217Hu01**

**Polyclonal Antibody to Serine Hydroxymethyltransferase 2, Mitochondrial (SHMT2)**

**Organism Species: *Homo sapiens (Human)***

***Instruction manual***

FOR RESEARCH USE ONLY

NOT FOR USE IN CLINICAL DIAGNOSTIC PROCEDURES

---

13th Edition (Revised in Aug, 2023)

**[ PROPERTIES ]**

**Source:** Polyclonal antibody preparation

**Host:** Rabbit

**Purification:** Antigen-specific affinity chromatography followed by Protein A affinity chromatography

**Traits:** Liquid

**Concentration:** 500µg/mL

**UOM:** 100µl

**Cross Reactivity:** Porcine

**Applications:** WB,IHC,ICC/IF; FCM

**[ IMMUNOGEN ]**

**Immunogen:** Recombinant SHMT2 (Asn30~His504) expressed in *E.coli*

**Accession No.:** RPE217Hu01

**[ APPLICATIONS ]**

Western blotting: 0.01-2µg/mL;

Immunohistochemistry: 5-20µg/mL;

Immunocytochemistry: 5-20µg/mL;

Flow cytometry:20µg/ml;

Optimal working dilutions must be determined by end user.

**[ FORMULATION ]**

**Form & Buffer:** Supplied as solution form in 0.01M PBS, pH7.4, containing 0.05% Proclin-300, 50% glycerol.

**[ STORAGE AND STABILITY ]**

**Storage:** Avoid repeated freeze/thaw cycles.

Store at 4°C for frequent use.

Aliquot and store at -20°C for 24 months.

**Stability Test:** The thermal stability is described by the loss rate. The loss rate was determined by accelerated thermal degradation test, that is, incubate the protein at 37°C for 48h, and no obvious degradation and precipitation were observed. The loss rate is less than 5% within the expiration date under appropriate storage condition.

**[ IDENTIFICATION ]**

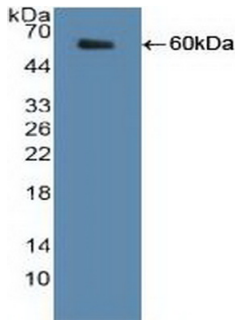
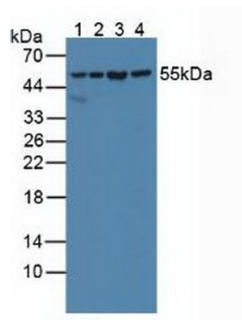
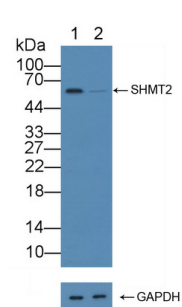


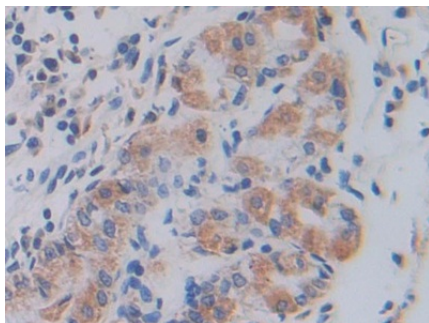
Figure. Western Blot; Sample: Recombinant SHMT2, Human.



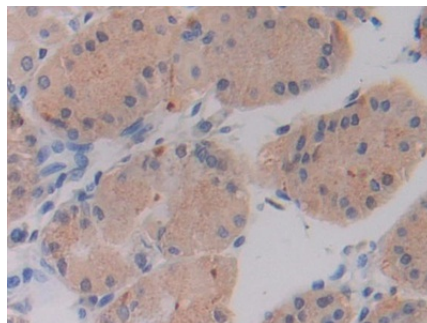
Western Blot; Sample: Lane1: Human Lung lysate; Lane2: 293T cell lysate; Lane3: Hela cell lysate; Lane4: Porcine Pancreas lysate  
 Primary Ab: 1µg/ml Rabbit Anti-Human SHMT2 Antibody  
 Second Ab: 0.2µg/mL HRP-Linked Caprine Anti-Rabbit IgG Polyclonal Antibody  
 (Catalog: SAA544Rb19)



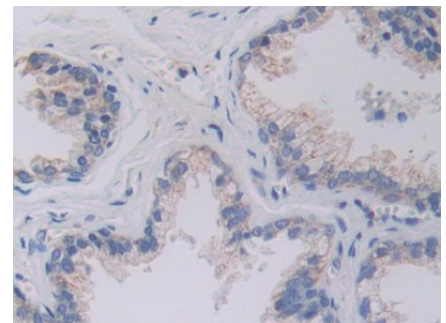
Knockout Varification:  
 Lane 1: Wild-type 293T cell lysate; Lane 2: SHMT2 knockout 293T cell lysate;  
 Predicted MW: 54kd  
 Observed MW: 55kd  
 Primary Ab: 1µg/ml Rabbit Anti-Human SHMT2 Antibody  
 Second Ab: 0.2µg/mL HRP-Linked Caprine Anti-Rabbit IgG Polyclonal Antibody  
 (Catalog: SAA544Rb19)



DAB staining on IHC-P;  
 Samples: Human Stomach Tissue;  
 Primary Ab: 20µg/ml Rabbit Anti-

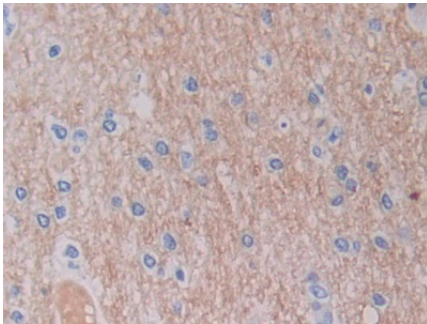


DAB staining on IHC-P;  
 Samples: Human Stomach cancer Tissue;



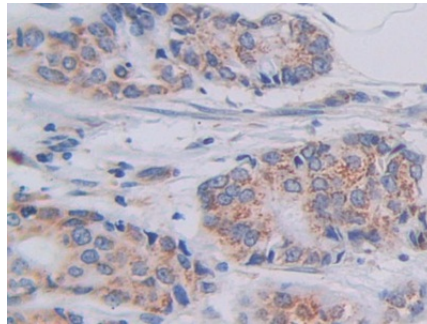
DAB staining on IHC-P;  
 Samples: Human Prostate Tissue;  
 Primary Ab: 20µg/ml Rabbit Anti-

Human SHMT2 Antibody  
 Second Ab: 2µg/mL HRP-Linked  
 Caprine Anti-Rabbit IgG Polyclonal  
 Antibody  
 (Catalog: SAA544Rb19)



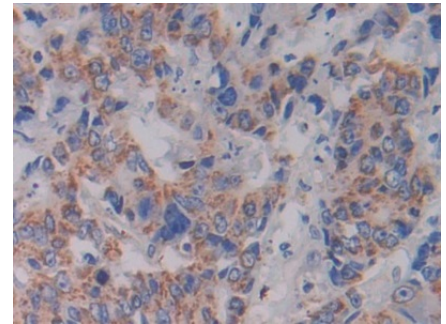
DAB staining on IHC-P;  
 Samples: Human Cerebrum Tissue;  
 Primary Ab: 20µg/ml Rabbit Anti-  
 Human SHMT2 Antibody  
 Second Ab: 2µg/mL HRP-Linked  
 Caprine Anti-Rabbit IgG Polyclonal  
 Antibody  
 (Catalog: SAA544Rb19)

Primary Ab: 20µg/ml Rabbit Anti-  
 Human SHMT2 Antibody  
 Second Ab: 2µg/mL HRP-Linked  
 Caprine Anti-Rabbit IgG Polyclonal  
 Antibody  
 (Catalog: SAA544Rb19)



DAB staining on IHC-P; Samples:  
 Human Breast cancer Tissue; Primary  
 Ab: 20µg/ml Rabbit Anti-Human  
 SHMT2 Antibody Second Ab:  
 2µg/mL HRP-Linked Caprine Anti-  
 Rabbit IgG Polyclonal Antibody  
 (Catalog: SAA544Rb19)

Human SHMT2 Antibody  
 Second Ab: 2µg/mL HRP-Linked  
 Caprine Anti-Rabbit IgG Polyclonal  
 Antibody  
 (Catalog: SAA544Rb19)



DAB staining on IHC-P;  
 Samples: Human Colorectal cancer  
 Tissue;  
 Primary Ab: 20µg/ml Rabbit Anti-  
 Human SHMT2 Antibody  
 Second Ab: 2µg/mL HRP-Linked  
 Caprine Anti-Rabbit IgG Polyclonal  
 Antibody  
 (Catalog: SAA544Rb19)

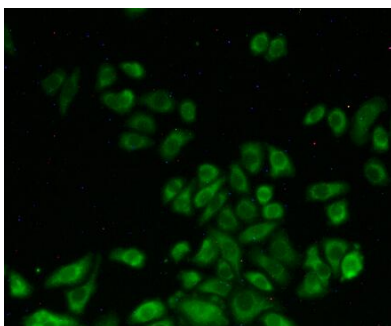
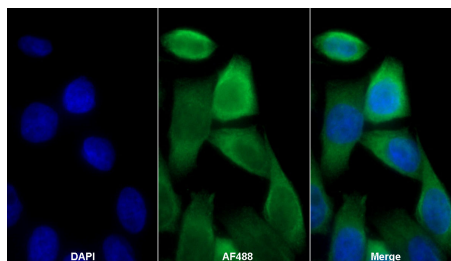
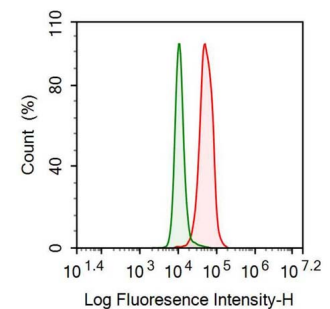


Figure: FITC staining on IHC-P;  
 Sample: HeLa cells.



AF488 staining on IF;  
 Sample: MCF7 cell  
 Primary Ab: 20µg/ml Rabbit Anti-  
 Human SHMT2 Antibody  
 Second Ab: 2µg/ml AF488-Linked  
 Caprine Anti-Rabbit IgG Polyclonal  
 Antibody



Human K562 cell was fixed with 2%  
 paraformaldehyde (10 min) ,  
 permeabilised with 0.1% BSA-Triton  
 X-100, then stained with 20µg/ml rabbit  
 Anti-human SHMT2 Polyclonal  
 Antibody (Catalog PAE217Hu01, red

(Catalog: SAA544Rb11)

histogram) or Isotype control antibody (Catalog IS067-Rb01, green histogram), followed by 1µg/ml FITC-conjugated Anti-rabbit IgG Secondary Antibody (Catalog SAA544Rb18).

**[ IMPORTANT NOTE ]**

The kit is designed for research use only, we will not be responsible for any issue if the kit was used in clinical diagnostic or any other procedures.