

PAB727Hu01

Polyclonal Antibody to Signal Transducer And Activator Of Transcription 5B (STAT5B)

Organism Species: *Homo sapiens (Human)*

Instruction manual

FOR RESEARCH USE ONLY

NOT FOR USE IN CLINICAL DIAGNOSTIC PROCEDURES

13th Edition (Revised in Aug, 2023)

[PROPERTIES]

Source: Polyclonal antibody preparation

Host: Rabbit

Purification: Antigen-specific affinity chromatography followed by Protein A affinity chromatography

Traits: Liquid

Concentration: 0.5mg/mL

UOM: 100µl

Cross Reactivity: N/A

Applications: WB,ICC/IF

[IMMUNOGEN]

Immunogen: Recombinant STAT5B (Ala497~Ser749) expressed in *E.coli*

Accession No.: RPB727Hu01

[APPLICATIONS]

Western blotting: 0.01-3µg/mL;

Immunofluorescence:5-20µg/mL;

Optimal working dilutions must be determined by end user.

[FORMULATION]

Form & Buffer: Supplied as solution form in 0.01M PBS, pH7.4, containing 0.05% Proclin-300, 50% glycerol.

[STORAGE AND STABILITY]

Storage: Avoid repeated freeze/thaw cycles.

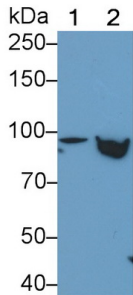
Store at 4°C for frequent use.

Aliquot and store at -20°C for 24 months.

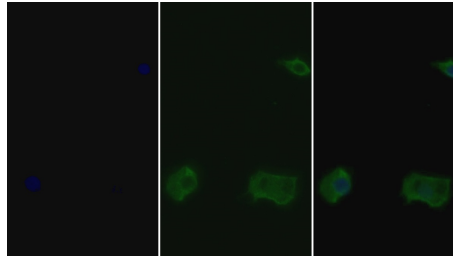
Stability Test: The thermal stability is described by the loss rate. The loss rate was determined by accelerated thermal degradation test, that is, incubate the protein at 37°C for 48h, and no obvious degradation and precipitation were observed. The loss rate is less than 5% within the

expiration date under appropriate storage condition.

[IDENTIFICATION]

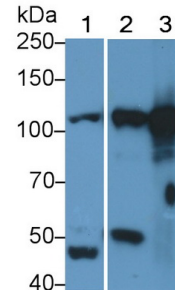


Western Blot; Sample: Lane1: K562 cell lysate; Lane2: HEL92.1.7 cell lysate
 Primary Ab: 0.2µg/ml Rabbit Anti-Human STAT5B Antibody Second Ab: 0.2µg/mL HRP-Linked Caprine Anti-Rabbit IgG Polyclonal Antibody
 (Catalog: SAA544Rb19)

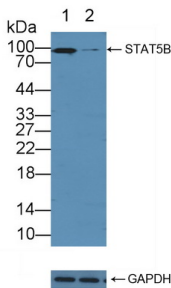


FITC staining on IF; Sample: Human

Hela cell; Primary Ab: 20µg/ml Rabbit Anti-Human STAT5B Antibody Second Ab: 1.3µg/ml FITC-Linked Caprine Anti-Rabbit IgG Polyclonal Antibody
 (Catalog: SAA544Rb18)



Western Blot; Sample: Lane1: Rat Serum; Lane2: Rat Cerebrum lysate; Lane3: Rat Lung lysate
 Primary Ab: 0.3µg/ml Rabbit Anti-Rat STAT2 Antibody
 Second Ab: 0.2µg/mL HRP-Linked Caprine Anti-Rabbit IgG Polyclonal Antibody
 (Catalog: SAA544Rb19)



Knockout Varification:

Lane 1: Wild-type K562 cell lysate;
 Lane 2: STAT5B knockout K562 cell lysate;

Predicted MW: 90kd
 Observed MW: 95kd

Primary Ab: 3µg/ml Rabbit Anti-Human STAT5B Antibody
 Second Ab: 0.2µg/mL HRP-Linked Caprine Anti-Rabbit IgG Polyclonal

Antibody

(Catalog: SAA544Rb19)

[IMPORTANT NOTE]

The kit is designed for research use only, we will not be responsible for any issue if the kit was used in clinical diagnostic or any other procedures.