

PAB737Ra01

Polyclonal Antibody to Signal Transducer And Activator Of Transcription 6 (STAT6)

Organism Species: *Rattus norvegicus* (Rat)

Instruction manual

FOR RESEARCH USE ONLY

NOT FOR USE IN CLINICAL DIAGNOSTIC PROCEDURES

13th Edition (Revised in Aug, 2023)

[PROPERTIES]

Source: Polyclonal antibody preparation

Host: Rabbit

Purification: Antigen-specific affinity chromatography followed by Protein A affinity chromatography

Traits: Liquid

Concentration: 0.5mg/mL

UOM: 100µL

Cross Reactivity: Human;Mouse

Applications: WB; IHC

[IMMUNOGEN]

Immunogen: Recombinant STAT6 (Gly557~Trp841) expressed in *E.coli*

Accession No.: RPB737Ra01

[APPLICATIONS]

Western blotting: 0.01-2µg/mL

Immunohistochemistry: 5-20µg/mL

Optimal working dilutions must be determined by end user.

[FORMULATION]

Form & Buffer: Supplied as solution form in PBS, pH7.4, containing 0.02% NaN₃, 50% glycerol.

[STORAGE AND STABILITY]

Storage: Avoid repeated freeze/thaw cycles.

Store at 4°C for frequent use.

Aliquot and store at -20°C for 24 months.

Stability Test: The thermal stability is described by the loss rate. The loss rate was determined by accelerated thermal degradation test, that is, incubate the protein at 37°C for 48h, and no obvious degradation and precipitation were observed. The loss rate is less than 5% within the

expiration date under appropriate storage condition.

[IDENTIFICATION]

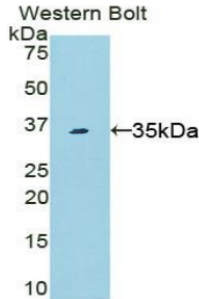
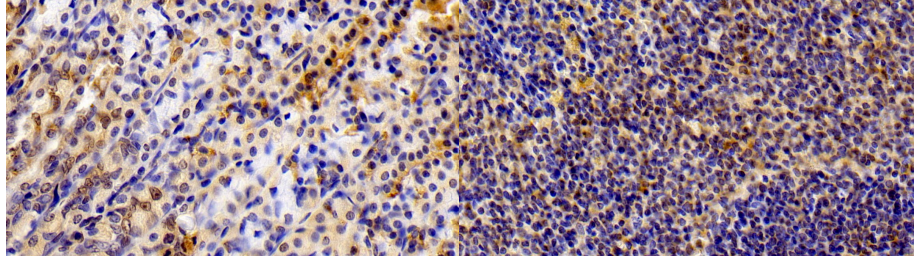
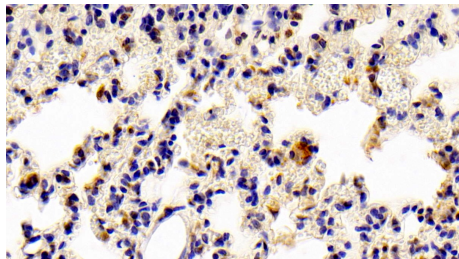


Figure. Western Blot; Sample: Recombinant STAT6, Rat.

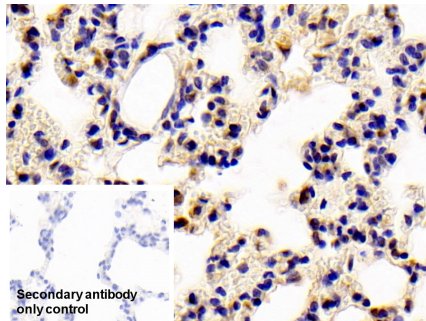


DAB staining on IHC-P; Samples: Rat Stomach Tissue; Primary Ab: 10²g/ml Rabbit Anti-Rat STAT6 Antibody
Second Ab: 2 μ g/mL HRP-Linked Caprine Anti-Rabbit IgG Polyclonal Antibody (Catalog: SAA544Rb19)

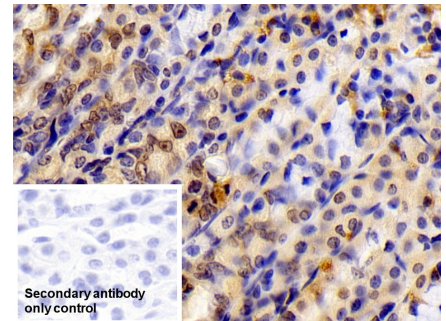
DAB staining on IHC-P; Samples: Rat Spleen Tissue; Primary Ab: 10²g/ml Rabbit Anti-Rat STAT6 Antibody
Second Ab: 2 μ g/mL HRP-Linked Caprine Anti-Rabbit IgG Polyclonal Antibody (Catalog: SAA544Rb19)



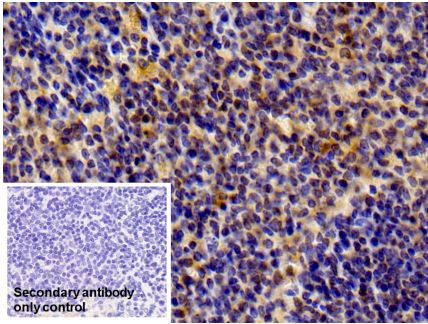
DAB staining on IHC-P; Samples: Rat Lung Tissue; Primary Ab: 10²g/ml Rabbit Anti-Rat STAT6 Antibody
Second Ab: 2 μ g/mL HRP-Linked Caprine Anti-Rabbit IgG Polyclonal Antibody (Catalog: SAA544Rb19)



DAB staining on IHC-P; Sample: Rat Lung Tissue Primary Ab: 10 μ g/ml Rabbit Anti-Rat STAT6 Antibody
Control: Used PBS instead of primary antibody
Secondary Ab: 2 μ g/ml HRP-Linked Caprine Anti-Rabbit IgG Polyclonal Antibody (Catalog: SAA544Rb19)



DAB staining on IHC-P; Sample: Rat Stomach Tissue Primary Ab: 10 μ g/ml Rabbit Anti-Rat STAT6 Antibody
Control: Used PBS instead of primary antibody
Secondary Ab: 2 μ g/ml HRP-Linked Caprine Anti-Rabbit IgG Polyclonal Antibody (Catalog: SAA544Rb19)



DAB staining on IHC-P;

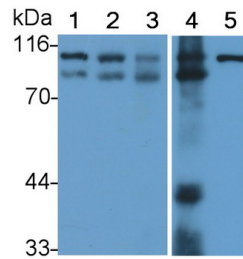
Sample: Rat Spleen Tissue

Primary Ab: 10µg/ml Rabbit Anti-Rat
STAT6 Antibody

Control: Used PBS instead of primary
antibody

Second Ab: 2µg/ml HRP-Linked
Caprine Anti-Rabbit IgG Polyclonal
Antibody

(Catalog: SAA544Rb19)



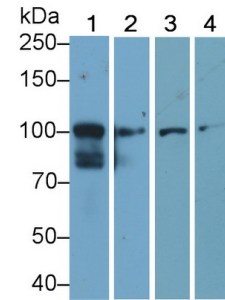
Western Blot; Sample: Lane1: Mouse
Spleen lysate; Lane2: Mouse Stomach
lysate; Lane3: Rat Spleen lysate;
Lane4: Rat Stomach lysate; Lane5:
Hela cell lysate

Primary Ab: 0.2µg/ml Rabbit Anti-Rat
STAT6 Antibody

Second Ab: 0.2µg/mL HRP-Linked
Caprine Anti-Rabbit IgG Polyclonal

Antibody

(Catalog: SAA544Rb19)



Western Blot; Sample: Lane1: Rat
Spleen lysate; Lane2: Mouse Spleen
lysate; Lane3: Porcine Spleen lysate;
Lane4: Hela cell lysate

Primary Ab: 0.2µg/ml Rabbit Anti-Rat
STAT6 Antibody

Second Ab: 0.2µg/mL HRP-Linked
Caprine Anti-Rabbit IgG Polyclonal
Antibody

(Catalog: SAA544Rb19)

[**IMPORTANT NOTE**]

The kit is designed for research use only, we will not be responsible for any issue if the kit was used in clinical diagnostic or any other procedures.