

PAE275Hu01

Polyclonal Antibody to Spleen Tyrosine Kinase (SYK)

Organism Species: *Homo sapiens* (Human)

Instruction manual

FOR RESEARCH USE ONLY

NOT FOR USE IN CLINICAL DIAGNOSTIC PROCEDURES

13th Edition (Revised in Aug, 2023)

[PROPERTIES]

Source: Polyclonal antibody preparation

Host: Rabbit

Purification: Antigen-specific affinity chromatography followed by Protein A affinity chromatography

Traits: Liquid

Concentration: 500µg/mL

UOM: 1

Cross Reactivity: Mouse, Rat, Porince

Applications: WB, IHC

[IMMUNOGEN]

Immunogen: Recombinant SYK (Asp374~Asn635) expressed in *E.coli*

Accession No.: RPE275Hu01

[APPLICATIONS]

Western blotting: 0.01-2µg/mL;

Immunohistochemistry: 5-20µg/mL;

Optimal working dilutions must be determined by end user.

[FORMULATION]

Form & Buffer: Supplied as solution form in 0.01M PBS, pH7.4, containing 0.05% Proclin-300, 50% glycerol.

[STORAGE AND STABILITY]

Storage: Avoid repeated freeze/thaw cycles.

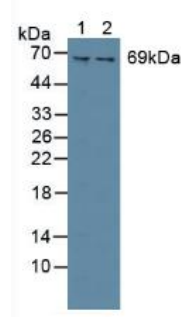
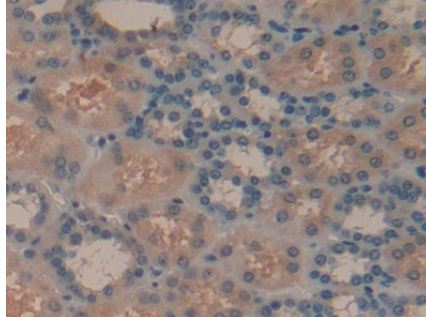
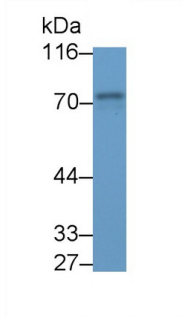
Store at 4°C for frequent use.

Aliquot and store at -20°C for 24 months.

Stability Test: The thermal stability is described by the loss rate. The loss rate was determined by accelerated thermal degradation test, that is, incubate the protein at 37°C for 48h, and no obvious degradation and precipitation were observed. The loss rate is less than 5% within the

expiration date under appropriate storage condition.

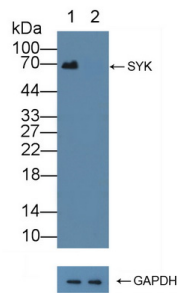
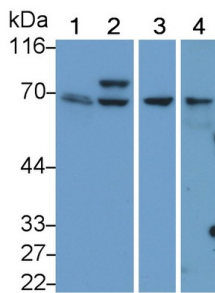
[IDENTIFICATION]



Western Blot; Sample: Porcine Spleen lysate Primary Ab: 0.5µg/ml Rabbit Anti-Human SYK Antibody Second Ab: 0.2µg/mL HRP-Linked Caprine Anti-Rabbit IgG Polyclonal Antibody (Catalog: SAA544Rb19)

DAB staining on IHC-P; Samples: Human Kidney Tissue; Primary Ab: 20µg/ml Rabbit Anti-Human SYK Antibody Second Ab: 2µg/mL HRP-Linked Caprine Anti-Rabbit IgG Polyclonal Antibody (Catalog: SAA544Rb19)

Figure. Western Blot; Sample: Lane1: Mouse Spleen Tissue; Lane2: Rat Spinal Cord Tissue.



Western Blot; Sample: Lane1: A431 cell lysate; Lane2: Raji cell lysate; Lane3: Mouse Thymus lysate; Lane4: Rat Thymus lysate Primary Ab: 0.5µg/ml Rabbit Anti-Human SYK Antibody Second Ab: 0.2µg/mL HRP-Linked Caprine Anti-Rabbit IgG Polyclonal Antibody (Catalog: SAA544Rb19)

Knockout Varification: Lane 1: Wild-type 293T cell lysate; Lane 2: SYK knockout 293T cell lysate; Predicted MW: 69,72kd Observed MW: 69kd Primary Ab: 5µg/ml Rabbit Anti-Human SYK Antibody Second Ab: 0.2µg/mL HRP-Linked Caprine Anti-Rabbit IgG Polyclonal Antibody (Catalog: SAA544Rb19)

[IMPORTANT NOTE]

The kit is designed for research use only, we will not be responsible for any issue if the kit was used in clinical diagnostic or any other procedures.