

PAD173Hu01

Polyclonal Antibody to Stromal Cell Derived Factor 2 Like Protein 1 (SDF2L1)

Organism Species: *Homo sapiens (Human)*

Instruction manual

FOR RESEARCH USE ONLY

NOT FOR USE IN CLINICAL DIAGNOSTIC PROCEDURES

13th Edition (Revised in Aug, 2023)

[**PROPERTIES**]

Source: Polyclonal antibody preparation

Host: Rabbit

Purification: Antigen-specific affinity chromatography followed by Protein A affinity chromatography

Traits: Liquid

Concentration: 0.5mg/ml

UOM: 100µl

Cross Reactivity: Mouse

Applications: WB,IHC

[**IMMUNOGEN**]

Immunogen: Recombinant SDF2L1 (Ala29~Glu213) expressed in *E.coli*

Accession No.: RPD173Hu01

[**APPLICATIONS**]

Western blotting: 0.5-2µg/mL

Immunohistochemistry: 5-20µg/mL

Immunocytochemistry: 5-20µg/mL

Optimal working dilutions must be determined by end user.

[**FORMULATION**]

Form & Buffer: Supplied as solution form in 0.01M PBS, pH7.4, containing 0.05% Proclin-300, 50% glycerol.

[**STORAGE AND STABILITY**]

Storage: Avoid repeated freeze/thaw cycles.

Store at 4°C for frequent use.

Aliquot and store at -20°C for 24 months.

Stability Test: The thermal stability is described by the loss rate. The loss rate was determined by accelerated thermal degradation test, that is, incubate the protein at 37°C for 48h, and no

obvious degradation and precipitation were observed. The loss rate is less than 5% within the expiration date under appropriate storage condition.

[IDENTIFICATION]

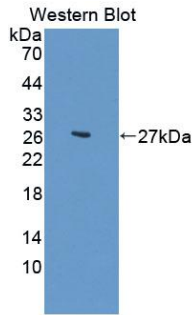
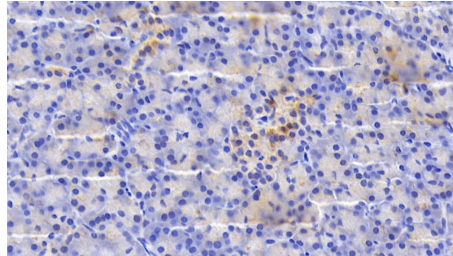
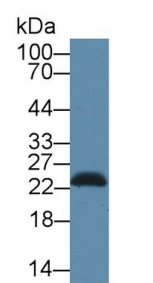


Figure. Western Blot; Sample: Recombinant SDF2L1, Human.



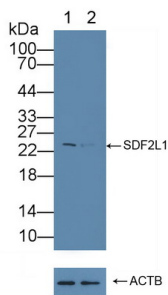
DAB staining on IHC-P; Samples:

Human Pancreas Tissue; Primary Ab: 20µg/ml Rabbit Anti-Human SDF2L1 Antibody Second Ab: 2µg/mL HRP-Linked Caprine Anti-Rabbit IgG Polyclonal Antibody (Catalog: SAA544Rb19)



Western Blot; Sample: Mouse Pancreas lysate;

Primary Ab: 1µg/ml Rabbit Anti-Human SDF2L1 Antibody Second Ab: 0.2µg/mL HRP-Linked Caprine Anti-Rabbit IgG Polyclonal Antibody (Catalog: SAA544Rb19)



Knockout Varification:

Lane 1: Wild-type K562 cell lysate;

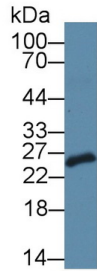
Lane 2: SDF2L1 knockout K562 cell lysate;

Predicted MW: 24kd

Observed MW: 24kd

Primary Ab: 1µg/ml Rabbit Anti-Human SDF2L1 Antibody

Second Ab: 0.2µg/mL HRP-Linked



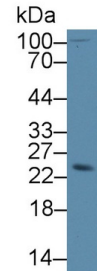
Western Blot; Sample: Mouse Testis lysate;

Primary Ab: 1µg/ml Rabbit Anti-Human SDF2L1 Antibody

Second Ab: 0.2µg/mL HRP-Linked Caprine Anti-Rabbit IgG Polyclonal

Antibody

(Catalog: SAA544Rb19)



Western Blot; Sample: Human K562 cell lysate;

Primary Ab: 1µg/ml Rabbit Anti-Human SDF2L1 Antibody

Second Ab: 0.2µg/mL HRP-Linked Caprine Anti-Rabbit IgG Polyclonal

Antibody

(Catalog: SAA544Rb19)

Caprine Anti-Rabbit IgG Polyclonal

Antibody

(Catalog: SAA544Rb19)

[IMPORTANT NOTE]

The kit is designed for research use only, we will not be responsible for any issue if the kit was used in clinical diagnostic or any other procedures.