

PAA117Rb51**Polyclonal Antibody to Superoxide Dismutase 3, Extracellular (SOD3)****Organism Species: *Oryctolagus cuniculus* (Rabbit)*****Instruction manual***

FOR IN VITRO USE AND RESEARCH USE ONLY

NOT FOR USE IN CLINICAL DIAGNOSTIC PROCEDURES

10th Edition (Revised in Jan, 2014)

[PRODUCT INFORMATION]**Immunogen:** SOD3, Rabbit**Clonality:** Polyclonal**Host:** Cavia**Immunoglobulin Type:** IgG**Purification:** Affinity Chromatography.**Applications:** WB, ICC, IHC-P, IHC-F, ELISA**Concentration:** 200µg/mL**UOM:** 100µg**[IMMUNOGEN INFORMATION]****Immunogen:** Recombinant SOD3 (Val25~Gly166) with two N-terminal Tags, His-tag and T7-tag expressed in *E.coli*.**Accession No.:** RPA117Rb01**[ANTIBODY SPECIFICITY]**

The antibody is a cavia polyclonal antibody raised against SOD3. It has been selected for its ability to recognize SOD3 in immunohistochemical staining and western blotting.

[APPLICATIONS]

Western blotting: 1:50-400

Immunocytochemistry in formalin fixed cells: 1:50-500

Immunohistochemistry in formalin fixed frozen section: 1:50-500

Immunohistochemistry in paraffin section: 1:10-100

Enzyme-linked Immunosorbent Assay: 1:100-5000

Optimal working dilutions must be determined by end user.

[CONTENTS]

Form & Buffer: Supplied as solution form in PBS, pH7.4, containing 0.02% NaN_3 , 50% glycerol.

[QUALITY CONTROL]

Content: The quality control contains recombinant SOD3 (Val25~Gly166) disposed in loading buffer.

Usage: 10uL per well when 3,3'-Diaminobenzidine(DAB) as the substrate.
5uL per well when used in enhanced chemiluminescent (ECL).

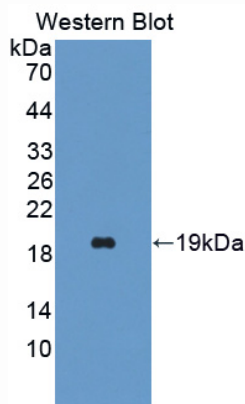
Note: The quality control is specifically manufactured as the positive control. Not used for other purposes.

Loading Buffer: 100mM Tris(pH8.8), 2% SDS, 200mM NaCl, 50% glycerol, BPB 0.01%, NaN_3 0.02%.

[STORAGE]

Store at 4°C for frequent use. Stored at -20°C in a manual defrost freezer for one year without detectable loss of activity. Avoid repeated freeze-thaw cycles.

[IMAGES]



Used in Western Blot, Sample:

Recombinant SOD3, Rabbit

PAA117Rb51

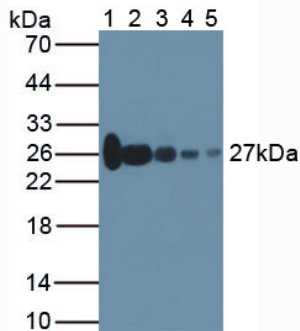
Polyclonal Antibody to Superoxide Dismutase 3, Extracellular (SOD3)

Organism Species: Oryctolagus cuniculus (Rabbit)

Instruction manual

FOR IN VITRO USE AND RESEARCH USE ONLY

NOT FOR USE IN CLINICAL DIAGNOSTIC PROCEDURES



Used in Western Blot, Sample:

Lane1: Rabbit Serum

Lane2: Rabbit Bladder Tissue

Lane3: Rabbit Uterus Tissue

Lane4: Rabbit Pancreas Tissue

Lane5: Rabbit Lung Tissue

Primary Ab: 2µg/mL Cavia Anti-Rabbit SOD3 Ab

Second Ab: 1:1000 Dilution of HRP-Linked Rabbit
Anti-Guinea IgG Antibody (Catalog: SECab04)