

PAC256Hu01

Polyclonal Antibody to Survival Motor Neuron Protein (SMN)

Organism Species: *Homo sapiens (Human)*

Instruction manual

FOR RESEARCH USE ONLY

NOT FOR USE IN CLINICAL DIAGNOSTIC PROCEDURES

13th Edition (Revised in Aug, 2023)

[PROPERTIES]

Source: Polyclonal antibody preparation

Host: Rabbit

Purification: Antigen-specific affinity chromatography followed by Protein A affinity chromatography

Traits: Liquid

Concentration: 0.5mg/mL

UOM: 100µL

Cross Reactivity: Porcine

Applications: WB;ICC/IF

[IMMUNOGEN]

Immunogen: Recombinant SMN (Ala2~Asn294) expressed in *E.coli*

Accession No.: RPC256Hu01

[APPLICATIONS]

Western blotting: 0.01-2µg/mL;

Immunocytochemistry: 5-20µg/mL;

Optimal working dilutions must be determined by end user.

[FORMULATION]

Form & Buffer: Supplied as solution form in 0.01M PBS, pH7.4, containing 0.05% Proclin-300, 50% glycerol.

[STORAGE AND STABILITY]

Storage: Avoid repeated freeze/thaw cycles.

Store at 4°C for frequent use.

Aliquot and store at -20°C for 24 months.

Stability Test: The thermal stability is described by the loss rate. The loss rate was determined by accelerated thermal degradation test, that is, incubate the protein at 37°C for 48h, and no obvious degradation and precipitation were observed. The loss rate is less than 5% within the

expiration date under appropriate storage condition.

[IDENTIFICATION]

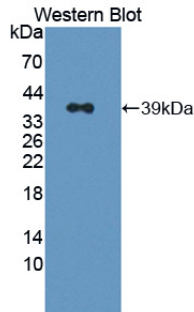
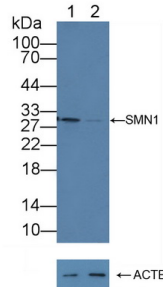
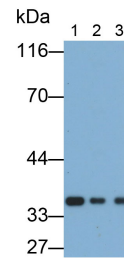


Figure. Western Blot; Sample: Recombinant SMN1, Human.



Knockout Verification:
 Lane 1: Wild-type HeLa cell lysate;
 Lane 2: SMN1 knockout HeLa cell lysate;
 Predicted MW: 31,30,28,27kd
 Observed MW: 30kd
 Primary Ab: 3µg/ml Rabbit Anti-Human SMN1 Antibody
 Second Ab: 0.2µg/mL HRP-Linked Caprine Anti-Rabbit IgG Polyclonal Antibody
 (Catalog: SAA544Rb19)



Western Blot; Samples: Lane1: 293T cell lysate; Lane2: HeLa cell lysate; Lane3: HepG2 cell lysate;
 Primary Ab: 0.2µg/ml Rabbit Anti-Human SMN Antibody
 Second Ab: 0.2µg/ml HRP-Linked Caprine Anti-Rabbit IgG Polyclonal Antibody
 (Catalog: SAA544Rb19)

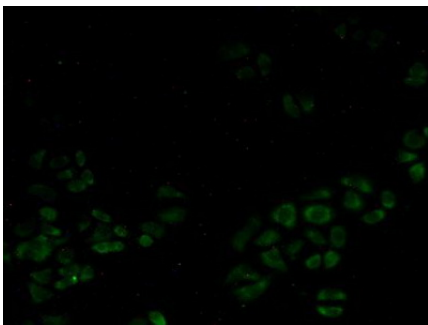


Figure. FITC staining on IHC-P;
 Samples: Human HeLa Cells.

[IMPORTANT NOTE]

The kit is designed for research use only, we will not be responsible for any issue if the kit was

used in clinical diagnostic or any other procedures.