

PAA305Hu01

Polyclonal Antibody to Thyroxine Binding Globulin (TBG)

Organism Species: *Homo sapiens (Human)*

Instruction manual

FOR RESEARCH USE ONLY

NOT FOR USE IN CLINICAL DIAGNOSTIC PROCEDURES

13th Edition (Revised in Aug, 2023)

[PROPERTIES]

Source: Polyclonal antibody preparation

Host: Rabbit

Purification: Antigen-specific affinity chromatography followed by Protein A affinity chromatography

Traits: Liquid

Concentration: 500µg/mL

UOM: 100µl

Cross Reactivity: Porcine

Applications: WB; IHC; ICC/IF

[IMMUNOGEN]

Immunogen: Recombinant TBG (Leu128~Ala415) expressed in *E.coli*

Accession No.: RPA305Hu01

[APPLICATIONS]

Western blotting: 0.01-5µg/mL;

Immunohistochemistry: 5-20µg/mL;

Immunocytochemistry: 5-20µg/mL;

Optimal working dilutions must be determined by end user.

[FORMULATION]

Form & Buffer: Supplied as solution form in 0.01M PBS, pH7.4, containing 0.05% Proclin-300, 50% glycerol.

[STORAGE AND STABILITY]

Storage: Avoid repeated freeze/thaw cycles.

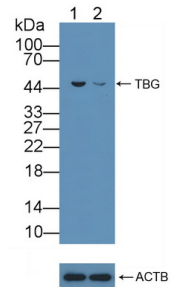
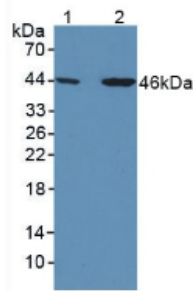
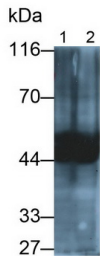
Store at 4°C for frequent use.

Aliquot and store at -20°C for 24 months.

Stability Test: The thermal stability is described by the loss rate. The loss rate was determined by accelerated thermal degradation test, that is, incubate the protein at 37°C for 48h, and no

obvious degradation and precipitation were observed. The loss rate is less than 5% within the expiration date under appropriate storage condition.

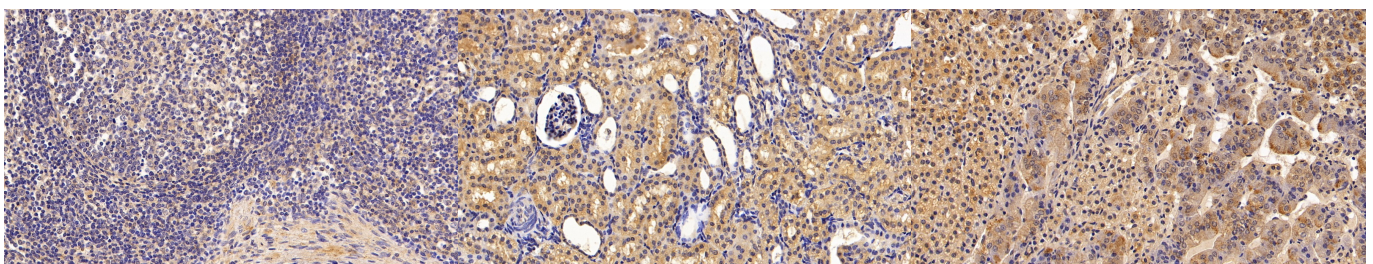
[IDENTIFICATION]



Western Blot; Sample: Lane1: HeLa cell lysate; Lane2: HepG2 cell lysate
 Primary Ab: 0.2ug/ml Rabbit Anti-Human TBG Antibody Second Ab: 0.2µg/mL HRP-Linked Caprine Anti-Rabbit IgG Polyclonal Antibody
 (Catalog: SAA544Rb19)

Western Blot; Sample: Lane1: Human Liver lysate; Lane2: HeLa cell lysate
 Primary Ab: 5ug/ml Rabbit Anti-Human TBG Antibody
 Second Ab: 0.2µg/mL HRP-Linked Caprine Anti-Rabbit IgG Polyclonal Antibody
 (Catalog: SAA544Rb19)

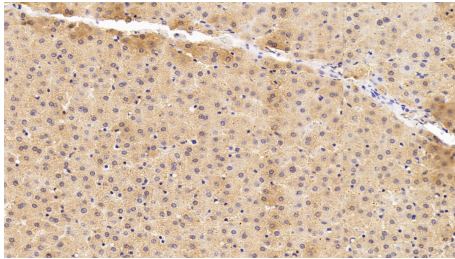
Knockout Varification:
 Lane 1: Wild-type HeLa cell lysate;
 Lane 2: TBG knockout HeLa cell lysate;
 Predicted MW: 46kd
 Observed MW: 46kd
 Primary Ab: 5µg/ml Rabbit Anti-Human TBG Antibody
 Second Ab: 0.2µg/mL HRP-Linked Caprine Anti-Rabbit IgG Polyclonal Antibody
 (Catalog: SAA544Rb19)



DAB staining on IHC-P;
 Sample: Porcine Lymph node Tissue;
 Primary Ab: 20ug/ml Rabbit Anti-Human TBG Antibody
 Second Ab: 2µg/mL HRP-Linked Caprine Anti-Rabbit IgG Polyclonal Antibody
 (Catalog: SAA544Rb19)

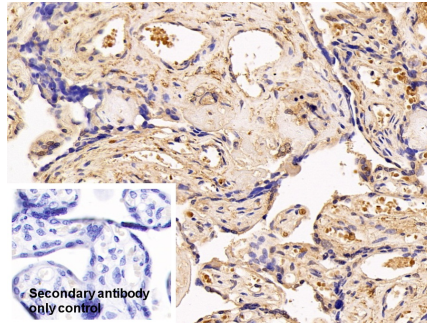
DAB staining on IHC-P;
 Sample: Porcine Kidney Tissue;
 Primary Ab: 20ug/ml Rabbit Anti-Human TBG Antibody
 Second Ab: 2µg/mL HRP-Linked Caprine Anti-Rabbit IgG Polyclonal Antibody
 (Catalog: SAA544Rb19)

DAB staining on IHC-P;
 Sample: Porcine Adrenal gland Tissue;
 Primary Ab: 20ug/ml Rabbit Anti-Human TBG Antibody
 Second Ab: 2µg/mL HRP-Linked Caprine Anti-Rabbit IgG Polyclonal Antibody
 (Catalog: SAA544Rb19)



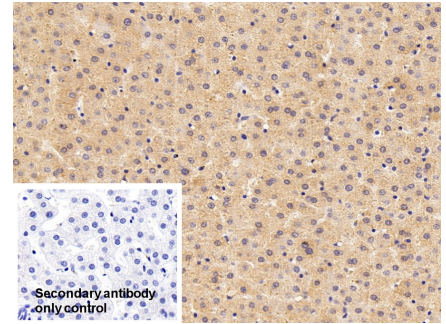
DAB staining on IHC-P;

Sample: Porcine Liver Tissue;
 Primary Ab: 20µg/ml Rabbit Anti-Human TBG Antibody
 Second Ab: 2µg/mL HRP-Linked Caprine Anti-Rabbit IgG Polyclonal Antibody
 (Catalog: SAA544Rb19)



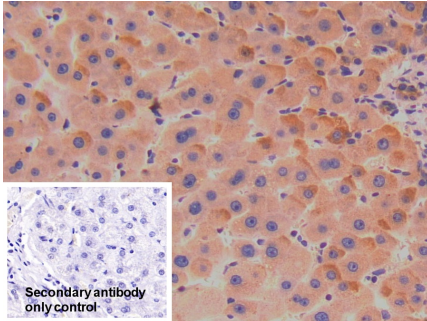
DAB staining on IHC-P;

Sample: Human Placenta Tissue
 Primary Ab: 20µg/ml Rabbit Anti-Human TBG Antibody
 Control: Used PBS instead of primary antibody
 Second Ab: 2µg/ml HRP-Linked Caprine Anti-Rabbit IgG Polyclonal Antibody
 (Catalog: SAA544Rb19)



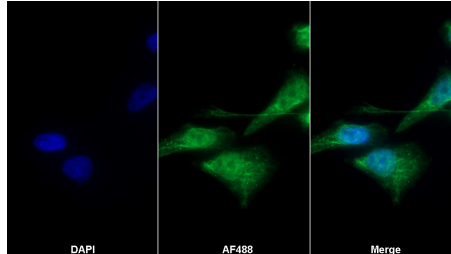
DAB staining on IHC-P;

Sample: Porcine Liver Tissue
 Primary Ab: 20µg/ml Rabbit Anti-Human TBG Antibody
 Control: Used PBS instead of primary antibody
 Second Ab: 2µg/ml HRP-Linked Caprine Anti-Rabbit IgG Polyclonal Antibody
 (Catalog: SAA544Rb19)



DAB staining on IHC-P;

Sample: Human Liver Tissue
 Primary Ab: 20µg/ml Rabbit Anti-Human TBG Antibody
 Control: Used PBS instead of primary antibody
 Second Ab: 2µg/ml HRP-Linked Caprine Anti-Rabbit IgG Polyclonal Antibody
 (Catalog: SAA544Rb19)



AF488 staining on IF;

Sample: HepG2 cell
 Primary Ab: 20µg/ml Rabbit Anti-Human TBG Antibody
 Second Ab: 2µg/ml AF488-Linked Caprine Anti-Rabbit IgG Polyclonal Antibody
 (Catalog: SAA544Rb11)

[IMPORTANT NOTE]

The kit is designed for research use only, we will not be responsible for any issue if the kit was used in clinical diagnostic or any other procedures.