

**PAC811Hu01**

**Polyclonal Antibody to Trophinin (TRO)**

**Organism Species: *Homo sapiens (Human)***

***Instruction manual***

FOR RESEARCH USE ONLY

NOT FOR USE IN CLINICAL DIAGNOSTIC PROCEDURES

---

13th Edition (Revised in Aug, 2023)

### [ **PROPERTIES** ]

**Source:** Polyclonal antibody preparation

**Host:** Rabbit

**Purification:** Antigen-specific affinity chromatography followed by Protein A affinity chromatography

**Traits:** Liquid

**Concentration:** 0.5mg/mL

**UOM:** 100µL

**Cross Reactivity:** N/A

**Applications:** WB; IHC

### [ **IMMUNOGEN** ]

**Immunogen:** Recombinant TRO (Leu444~Ala642) expressed in *E.coli*

**Accession No.:** RPC811Hu01

### [ **APPLICATIONS** ]

Western blotting: 0.01-2µg/mL

Immunohistochemistry: 5-20µg/mL

Immunocytochemistry: 5-20µg/mL

Optimal working dilutions must be determined by end user.

### [ **FORMULATION** ]

**Form & Buffer:** Supplied as solution form in 0.01M PBS, pH7.4, containing 0.05% Proclin-300, 50% glycerol.

### [ **STORAGE AND STABILITY** ]

**Storage:** Avoid repeated freeze/thaw cycles.

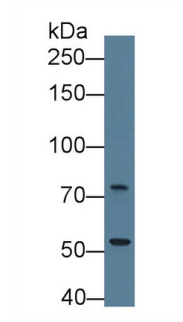
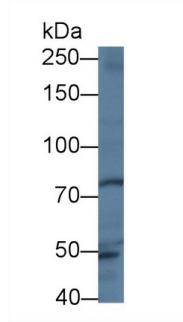
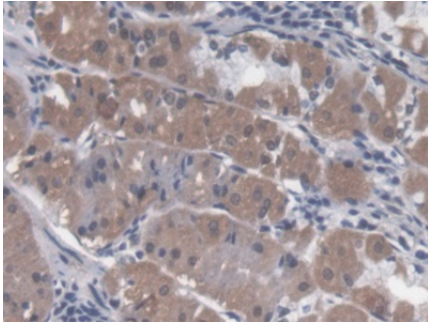
Store at 4°C for frequent use.

Aliquot and store at -20°C for 24 months.

**Stability Test:** The thermal stability is described by the loss rate. The loss rate was determined by accelerated thermal degradation test, that is, incubate the protein at 37°C for 48h, and no

obvious degradation and precipitation were observed. The loss rate is less than 5% within the expiration date under appropriate storage condition.

**[ IDENTIFICATION ]**



DAB staining on IHC-P; Samples:	Western Blot; Sample: Human HeLa cell	Western Blot; Sample: Human U2OS
Human Stomach Tissue; Primary Ab:	lysate;	cell lysate;
20µg/ml Rabbit Anti-Human TRO	Primary Ab: 1µg/ml Rabbit Anti-Human	Primary Ab: 1µg/ml Rabbit Anti-Human
Antibody	TRO Antibody	TRO Antibody
Second Ab: 2µg/mL HRP-	Second Ab: 0.2µg/mL HRP-Linked	Second Ab: 0.2µg/mL HRP-Linked
Linked Caprine Anti-Rabbit IgG	Caprine Anti-Rabbit IgG Polyclonal	Caprine Anti-Rabbit IgG Polyclonal
Polyclonal Antibody (Catalog:	Antibody	Antibody
SAA544Rb19)	(Catalog: SAA544Rb19)	(Catalog: SAA544Rb19)

**[ IMPORTANT NOTE ]**

The kit is designed for research use only, we will not be responsible for any issue if the kit was used in clinical diagnostic or any other procedures.