

**PAA928Ra01**

**Polyclonal Antibody to Tumor Protein p53 (P53)**

**Organism Species: *Rattus norvegicus* (Rat)**

***Instruction manual***

FOR RESEARCH USE ONLY

NOT FOR USE IN CLINICAL DIAGNOSTIC PROCEDURES

---

13th Edition (Revised in Aug, 2023)

### **[ PROPERTIES ]**

**Source:** Polyclonal antibody preparation

**Host:** Rabbit

**Purification:** Antigen-specific affinity chromatography followed by Protein A affinity chromatography

**Traits:** Liquid

**Concentration:** 500µg/mL

**UOM:** 100µL

**Cross Reactivity:** N/A

**Applications:** WB, ICC/IF

### **[ IMMUNOGEN ]**

**Immunogen:** Recombinant P53 (Pro90~Ala354) expressed in *E.coli*

**Accession No.:** RPA928Ra01

### **[ APPLICATIONS ]**

Western blotting: 0.01-2µg/mL;

Immunofluorescence: 5-40µg/mL;

Optimal working dilutions must be determined by end user.

### **[ FORMULATION ]**

**Form & Buffer:** Supplied as solution form in 0.01M PBS, pH7.4, containing 0.05% Proclin-300, 50% glycerol.

### **[ STORAGE AND STABILITY ]**

**Storage:** Avoid repeated freeze/thaw cycles.

Store at 4°C for frequent use.

Aliquot and store at -20°C for 24 months.

**Stability Test:** The thermal stability is described by the loss rate. The loss rate was determined by accelerated thermal degradation test, that is, incubate the protein at 37°C for 48h, and no obvious degradation and precipitation were observed. The loss rate is less than 5% within the

expiration date under appropriate storage condition.

**[ IDENTIFICATION ]**

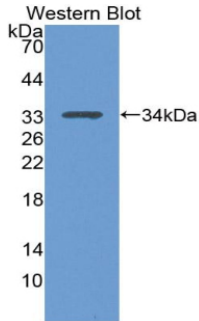
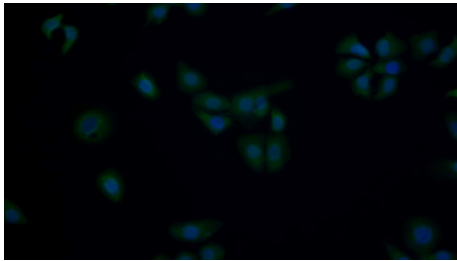


Figure. Western Blot; Sample:  
Recombinant TP53, Rat.



FITC staining on IF; Samples: Human  
HepG2 cell; Primary Ab: 20µg/mL  
Rabbit Anti-Rat TP53 Antibody Second  
Ab: 1.5µg/mL FITC-Linked Caprine Anti-  
Rabbit IgG Polyclonal Antibody  
(Catalog: SAA544Rb18)



FITC staining on IF;  
Samples: Human Hela cell;  
Primary Ab: 40µg/mL Rabbit Anti-Rat  
TP53 Antibody  
Second Ab: 1.5µg/mL FITC-Linked  
Caprine Anti-Rabbit IgG Polyclonal  
Antibody  
(Catalog: SAA544Rb18)

**[ IMPORTANT NOTE ]**

The kit is designed for research use only, we will not be responsible for any issue if the kit was used in clinical diagnostic or any other procedures.