

PAC245Hu01

Polyclonal Antibody to Wilms Tumor 1 Associated Protein (WTAP)

Organism Species: *Homo sapiens* (Human)

Instruction manual

FOR RESEARCH USE ONLY

NOT FOR USE IN CLINICAL DIAGNOSTIC PROCEDURES

13th Edition (Revised in Aug, 2023)

[**PROPERTIES**]

Source: Polyclonal antibody preparation

Host: Rabbit

Purification: Antigen-specific affinity chromatography followed by Protein A affinity chromatography

Traits: Liquid

Concentration: 0.5mg/mL

UOM: 20 μ L

Cross Reactivity: Mouse;Rat;Porcine.

Applications: WB; IHC; ICC; IP.

[**IMMUNOGEN**]

Immunogen: Recombinant WTAP (Met1~Asp150) expressed in *E.coli*

Accession No.: RPC245Hu01

[**APPLICATIONS**]

Western blotting: 0.01-2 μ g/mL;

Immunohistochemistry: 5-20 μ g/mL;

Immunocytochemistry: 5-20 μ g/mL;

Optimal working dilutions must be determined by end user.

[**FORMULATION**]

Form & Buffer: Supplied as solution form in PBS, pH7.4, containing 0.02% NaN₃, 50% glycerol.

[**STORAGE AND STABILITY**]

Storage: Avoid repeated freeze/thaw cycles.

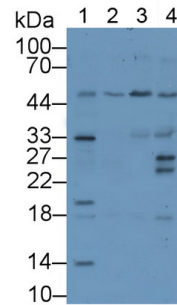
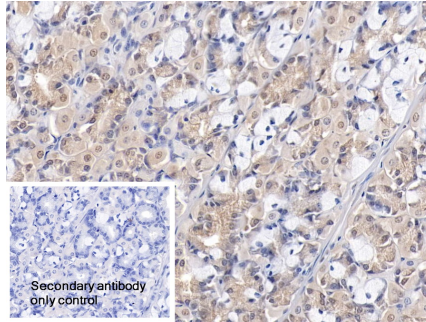
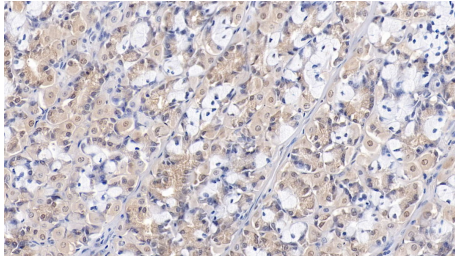
Store at 4°C for frequent use.

Aliquot and store at -20°C for 24 months.

Stability Test: The thermal stability is described by the loss rate. The loss rate was determined by accelerated thermal degradation test, that is, incubate the protein at 37°C for 48h, and no

obvious degradation and precipitation were observed. The loss rate is less than 5% within the expiration date under appropriate storage condition.

[IDENTIFICATION]



DAB staining on IHC-P; Samples:
 Human Stomach Tissue; Primary Ab:
 20µg/ml Rabbit Anti-Human WTAP
 Antibody Second Ab: 2µg/mL HRP-
 Linked Caprine Anti-Rabbit IgG
 Polyclonal Antibody (Catalog:
 SAA544Rb19)

DAB staining on IHC-P;
 Sample: Human Stomach Tissue
 Primary Ab: 20µg/ml Rabbit Anti-
 Human WTAP Antibody
 Control: Used PBS instead of primary
 antibody
 Second Ab: 2µg/ml HRP-Linked
 Caprine Anti-Rabbit IgG Polyclonal
 Antibody
 (Catalog: SAA544Rb19)

Western Blot; Sample: Lane1: Porcine
 Lymph node lysate; Lane2: Porcine
 Testis lysate; Lane3: Human Jurkat cell
 lysate; Lane4: Human HepG2 cell
 lysate;
 Primary Ab: 1µg/mL Rabbit Anti-Human
 WTAP Antibody
 Second Ab: 0.2µg/mL HRP-Linked
 Caprine Anti-Rabbit IgG Polyclonal
 Antibody
 (Catalog: SAA544Rb19)

[IMPORTANT NOTE]

The kit is designed for research use only, we will not be responsible for any issue if the kit was used in clinical diagnostic or any other procedures.