

**PAB917Hu01**

**Polyclonal Antibody to Wiskott Aldrich Syndrome Protein (WASP)**

**Organism Species: *Homo sapiens (Human)***

***Instruction manual***

FOR RESEARCH USE ONLY

NOT FOR USE IN CLINICAL DIAGNOSTIC PROCEDURES

---

13th Edition (Revised in Aug, 2023)

### **[ PROPERTIES ]**

**Source:** Polyclonal antibody preparation

**Host:** Rabbit

**Purification:** Antigen-specific affinity chromatography followed by Protein A affinity chromatography

**Traits:** Liquid

**Concentration:** 500µg/mL

**UOM:** 100µl

**Cross Reactivity:** Porcine

**Applications:** WB,IHC

### **[ IMMUNOGEN ]**

**Immunogen:** Recombinant WASP (Leu39~Gly251) expressed in *E.coli*

**Accession No.:** RPB917Hu01

### **[ APPLICATIONS ]**

Western blotting: 0.5-2µg/mL;

Immunohistochemistry: 5-20µg/mL;

Immunocytochemistry: 5-20µg/mL;

Optimal working dilutions must be determined by end user.

### **[ FORMULATION ]**

**Form & Buffer:** Supplied as solution form in 0.01M PBS, pH7.4, containing 0.05% Proclin-300, 50% glycerol.

### **[ STORAGE AND STABILITY ]**

**Storage:** Avoid repeated freeze/thaw cycles.

Store at 4°C for frequent use.

Aliquot and store at -20°C for 24 months.

**Stability Test:** The thermal stability is described by the loss rate. The loss rate was determined by accelerated thermal degradation test, that is, incubate the protein at 37°C for 48h, and no

obvious degradation and precipitation were observed. The loss rate is less than 5% within the expiration date under appropriate storage condition.

**[ IDENTIFICATION ]**

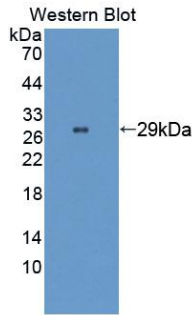
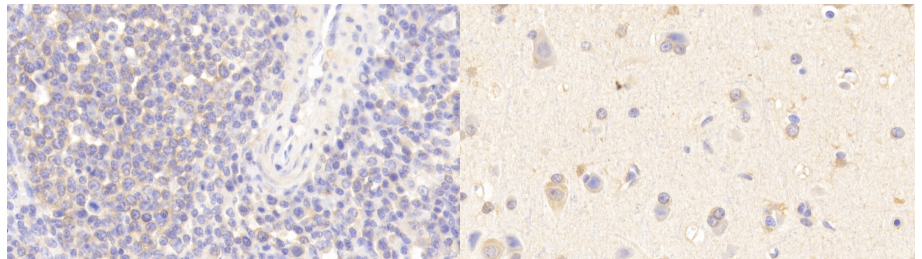
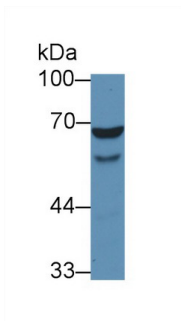


Figure. Western Blot; Sample: Recombinant WASP, Human.

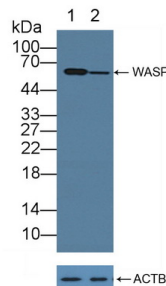


DAB staining on IHC-P; Samples: Human Spleen Tissue; Primary Ab: 20µg/ml Rabbit Anti-Human WASP Antibody Second Ab: 2µg/mL HRP-Linked Caprine Anti-Rabbit IgG Polyclonal Antibody (Catalog: SAA544Rb19)

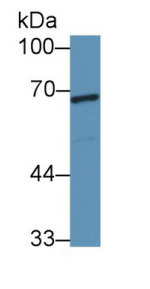
DAB staining on IHC-P; Samples: Human Cerebrum Tissue; Primary Ab: 20µg/ml Rabbit Anti-Human WASP Antibody Second Ab: 2µg/mL HRP-Linked Caprine Anti-Rabbit IgG Polyclonal Antibody (Catalog: SAA544Rb19)



Western Blot; Sample: Human HL60 cell lysate; Primary Ab: 1µg/ml Rabbit Anti-Human WASP Antibody Second Ab: 0.2µg/mL HRP-Linked Caprine Anti-Rabbit IgG Polyclonal Antibody (Catalog: SAA544Rb19)



Knockout Varification: Lane 1: Wild-type hl60 cell lysate; Lane 2: WASP knockout hl60 cell lysate; Predicted MW: 53kd Observed MW: 60kd Primary Ab: 1µg/ml Rabbit Anti-Human WASP Antibody Second Ab: 0.2µg/mL HRP-Linked Caprine Anti-Rabbit IgG Polyclonal Antibody



Western Blot; Sample: Porcine Spleen lysate; Primary Ab: 1µg/ml Rabbit Anti-Human WASP Antibody Second Ab: 0.2µg/mL HRP-Linked Caprine Anti-Rabbit IgG Polyclonal Antibody (Catalog: SAA544Rb19)

(Catalog: SAA544Rb19)

**[ IMPORTANT NOTE ]**

The kit is designed for research use only, we will not be responsible for any issue if the kit was used in clinical diagnostic or any other procedures.