

PAB156Ra01

Polyclonal Antibody to c-Jun N-terminal Kinase 1 (JNK1)

Organism Species: *Rattus norvegicus* (Rat)

Instruction manual

FOR RESEARCH USE ONLY

NOT FOR USE IN CLINICAL DIAGNOSTIC PROCEDURES

13th Edition (Revised in Aug, 2023)

[PROPERTIES]

Source: Polyclonal antibody preparation

Host: Rabbit

Purification: Antigen-specific affinity chromatography followed by Protein A affinity chromatography

Traits: Liquid

Concentration: 0.23mg/ml

UOM: 100µl

Cross Reactivity: Human;Mouse;Porcine

Applications: WB; IHC; ICC; IP.

[IMMUNOGEN]

Immunogen: Recombinant JNK1 (Gly138~Gly370) expressed in *E.coli*

Accession No.: RPB156Ra01

[APPLICATIONS]

Western blotting: 0.01-2µg/mL;

Immunohistochemistry: 5-30µg/mL;

Immunofluorescence:5-20µg/mL;

Optimal working dilutions must be determined by end user.

[FORMULATION]

Form & Buffer: Supplied as solution form in PBS, pH7.4, containing 0.02% NaN₃, 50% glycerol.

[STORAGE AND STABILITY]

Storage: Avoid repeated freeze/thaw cycles.

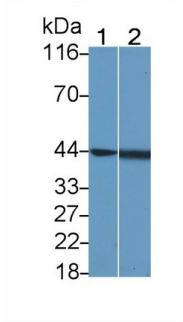
Store at 4°C for frequent use.

Aliquot and store at -20°C for 24 months.

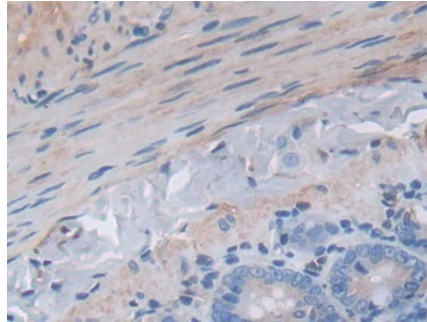
Stability Test: The thermal stability is described by the loss rate. The loss rate was determined by accelerated thermal degradation test, that is, incubate the protein at 37°C for 48h, and no

obvious degradation and precipitation were observed. The loss rate is less than 5% within the expiration date under appropriate storage condition.

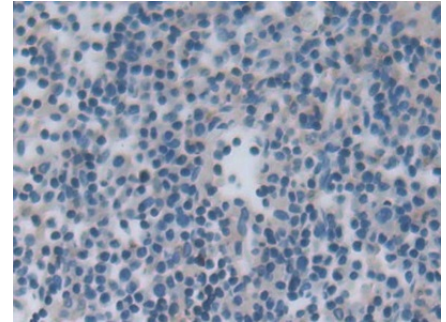
[IDENTIFICATION]



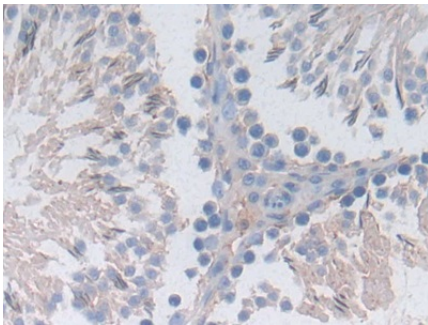
Western Blot; Sample: Lane1: Rat Lung lysate; Lane2: SK-N-SH cell lysate
 Primary Ab: 2?g/ml Rabbit Anti-Rat JNK1 Antibody Second Ab: 0.2µg/mL HRP-Linked Caprine Anti-Rabbit IgG Polyclonal Antibody (Catalog: SAA544Rb19)



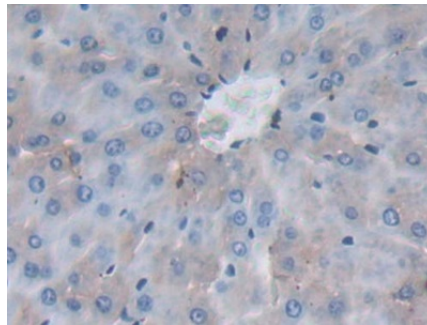
DAB staining on IHC-P;
 Samples: Rat Small intestine Tissue;
 Primary Ab: 30µg/ml Rabbit Anti-Rat MAPK8 Antibody
 Second Ab: 2µg/mL HRP-Linked Caprine Anti-Rabbit IgG Polyclonal Antibody (Catalog: SAA544Rb19)



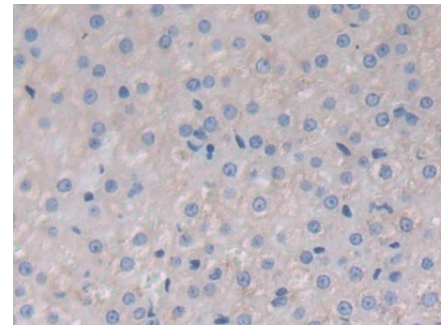
DAB staining on IHC-P;
 Samples: Rat Lymph node Tissue;
 Primary Ab: 30µg/ml Rabbit Anti-Rat MAPK8 Antibody
 Second Ab: 2µg/mL HRP-Linked Caprine Anti-Rabbit IgG Polyclonal Antibody (Catalog: SAA544Rb19)



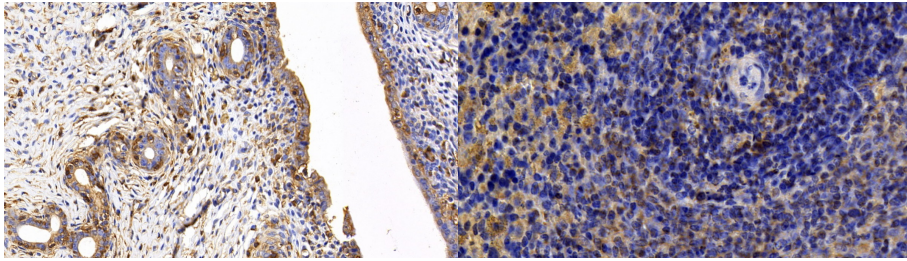
DAB staining on IHC-P;
 Samples: Rat Testis Tissue;
 Primary Ab: 30µg/ml Rabbit Anti-Rat MAPK8 Antibody
 Second Ab: 2µg/mL HRP-Linked Caprine Anti-Rabbit IgG Polyclonal Antibody (Catalog: SAA544Rb19)



DAB staining on IHC-P;
 Samples: Rat Liver Tissue;
 Primary Ab: 30µg/ml Rabbit Anti-Rat MAPK8 Antibody
 Second Ab: 2µg/mL HRP-Linked Caprine Anti-Rabbit IgG Polyclonal Antibody (Catalog: SAA544Rb19)



DAB staining on IHC-P;
 Samples: Rat Adrenal gland Tissue;
 Primary Ab: 30µg/ml Rabbit Anti-Rat MAPK8 Antibody
 Second Ab: 2µg/mL HRP-Linked Caprine Anti-Rabbit IgG Polyclonal Antibody (Catalog: SAA544Rb19)



DAB staining on IHC-P;

Sample: Rat Uterus Tissue;

Primary Ab: 20?g/ml Rabbit Anti-Rat
JNK1 Antibody

Second Ab: 2µg/mL HRP-Linked
Caprine Anti-Rabbit IgG Polyclonal
Antibody

(Catalog: SAA544Rb19)

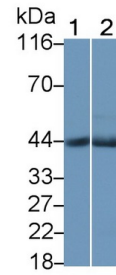
DAB staining on IHC-P;

Sample: Rat Spleen Tissue;

Primary Ab: 20?g/ml Rabbit Anti-Rat
JNK1 Antibody

Second Ab: 2µg/mL HRP-Linked
Caprine Anti-Rabbit IgG Polyclonal
Antibody

(Catalog: SAA544Rb19)

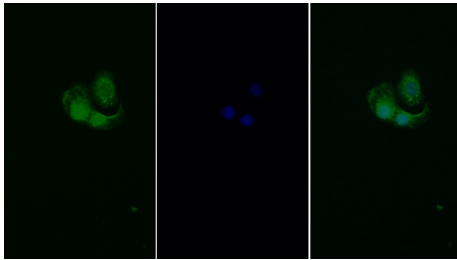


Western Blot; Sample: Lane1: Mouse
Cerebrum lysate; Lane2: Porcine
Cerebrum lysate

Primary Ab: 1µg/ml Rabbit Anti-Rat
JNK1 Antibody

Second Ab: 0.2µg/mL HRP-Linked
Caprine Anti-Rabbit IgG Polyclonal
Antibody

(Catalog: SAA544Rb19)



FITC staining on IF;

Sample: Human Hela cell;

Primary Ab: 20?g/ml Rabbit Anti-Rat
JNK1 Antibody

Second Ab: 1.5?g/ml FITC-Linked
Caprine Anti-Rabbit IgG Polyclonal
Antibody

(Catalog: SAA544Rb18)

[IMPORTANT NOTE]

The kit is designed for research use only, we will not be responsible for any issue if the kit was used in clinical diagnostic or any other procedures.