



CSI290Ca01

Primary Canine Olfactory Bulb Neuron Cells (OBNC)

Organism Species: *Canis familiaris*; Canine (Dog)

Instruction manual

FOR RESEARCH USE ONLY

NOT FOR USE IN CLINICAL DIAGNOSTIC PROCEDURES

1st Edition (Revised in Oct, 2024)

[DESCRIPTION]

Cell Type: Neuron Cell

Synonyms: OBNC

Strain: Beagle

Age: 1-2 days

Tissue Source: Olfactory Bulb

Gender: Male

Disease: Normal

Size: $>5 \times 10^5$ cell/vial

[PROPERTIES]

Cell activity: $>85\%$ (Viability by Trypan Blue Exclusion).

Formulation: Frozen 1 mL or T25 flask.

Biosafety: Negative for HIV-1, HBV, HCV, mycoplasma, bacteria, yeast and fungi.

Applications: For research use only. It is not approved for human or animal use, or for application in clinical diagnostic procedures.

Growth Properties: Adherent

[CONTENTS]

Form & Buffer: Supplied as solution form in frozen stock solution, containing 90% FBS+10% DMSO.

[USAGE]

Upon receiving the cells in a T-25 flask at room temperature, immediately transfer the cells to 37°C, 5% incubator; the cells in vials, directly and immediately transfer the cells from dry ice to liquid nitrogen.

Culture conditions:

Special culture medium for neuronal cell:

Neurobasal-A Medium+B-27 Supplement (50X)+1%Penicillin-Streptomycin Solution

Temperature: 37°C

Condition: 95% air, 5% carbon dioxide

Cell recovery:

After receiving the cells, shake at 37°C in a water bath until completely dissolved, transfer to a 15 ml centrifuge tube, add 3-5 times complete culture solution, 1000 rpm for 5 min, discard the supernatant,



and place in a T25 flask for culture.

Cell passage:

Further culture of Canine Olfactory Bulb Neuron is guaranteed under the conditions we provide; However, Canine Olfactory Bulb Neuron is not recommended for expansion or long-term cultures because cells do not proliferate in culture.

[Shipping]

Dry ice.

[STORAGE]

Upon receiving, directly and immediately transfer the cells from dry ice to liquid nitrogen and keep the cells in liquid nitrogen until they are needed for experiments.

[IMPORTANT NOTE]

1. Canine Olfactory Bulb Neuron is not recommended for expanding or long-term cultures since the cells do not proliferate in culture.
2. It is recommended that culture bottles be coated with Collagen type I from rat tail, and the concentration of rat tail collagen coating is 0.1mg/ml.
3. The cell is for research use only, and we will not be responsible for any issue if the cell was used in clinical diagnostic or any other procedures.

[Figure]

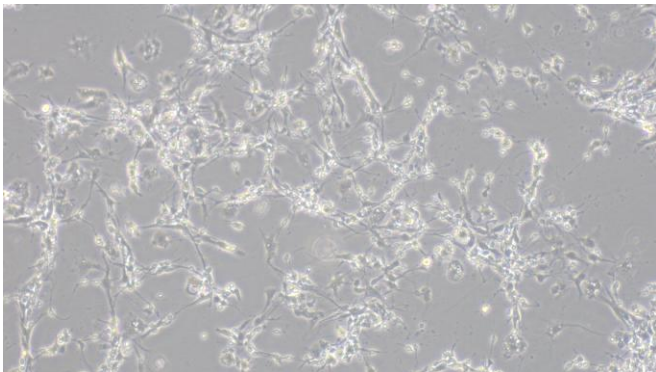


Figure 1

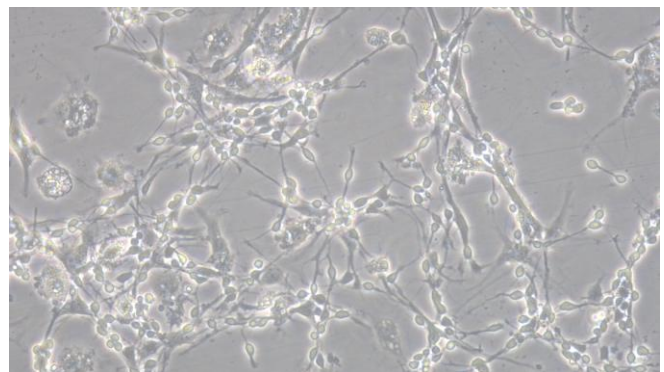


Figure 2

Figure 1 Morphology of Canine Olfactory Bulb Neuron (Optical microscope,×100)

Figure 2 Morphology of Canine Olfactory Bulb Neuron (Optical microscope,×200)