



CSI239Ra01

Primary Rat Neurons-spinal cord

Organism Species: *Rattus norvegicus* (Rat)

Instruction manual

FOR RESEARCH USE ONLY

NOT FOR USE IN CLINICAL DIAGNOSTIC PROCEDURES

1th Edition (Revised in Aug, 2022)

[DESCRIPTION]

Cell Type: Neuron

Synonyms: RN-sc

Species: *Rattus norvegicus* (Rat)

Tissue Source: Spinal cord

Size: $>5 \times 10^5$ cell/mL

[PROPERTIES]

Cell activity: $>85\%$ (Viability by Trypan Blue Exclusion).

Formulation: Frozen 1 mL or T25 flask.

Biosafety: Negative for HIV-1, HBV, HCV, mycoplasma, bacteria, yeast and fungi.

Applications: For research use only. It is not approved for human or animal use, or for application in clinical diagnostic procedures.

Growth Properties: Adherent

[CONTENTS]

Form & Buffer: Supplied as solution form in frozen stock solution, containing 90% FBS+10% DMSO.

[USAGE]

Upon receiving the cells in a T-25 flask at room temperature, immediately transfer the cells to 37°C, 5% incubator; the cells in vials, directly and immediately transfer the cells from dry ice to liquid nitrogen.

Culture conditions:

Special culture medium for neuronal cell:

Neurobasal-A Medium+B-27 Supplement (50X)+1%Penicillin-Streptomycin Solution

Temperature: 37°C

Condition: 95% air, 5% carbon dioxide

Cell recovery:

After receiving the cells, shake at 37°C in a water bath until completely dissolved, transfer to a 15 ml centrifuge tube, add 3-5 times complete culture solution, 1000 rpm for 5 min, discard the supernatant, and place in a T25 flask for culture.

Cell passage:

Further culture of RN-sc is guaranteed under the conditions we provide; However, RN-sc is not



recommended for expansion or long-term cultures because cells do not proliferate in culture.

[Shipping]

Dry ice.

[STORAGE]

Upon receiving, directly and immediately transfer the cells from dry ice to liquid nitrogen and keep the cells in liquid nitrogen until they are needed for experiments.

[IMPORTANT NOTE]

1. RN-sc is not recommended for expanding or long-term cultures since the cells do not proliferate in culture.
2. The cell is for research use only, we will not be responsible for any issue if the cell was used in clinical diagnostic or any other procedures.

[Figure]

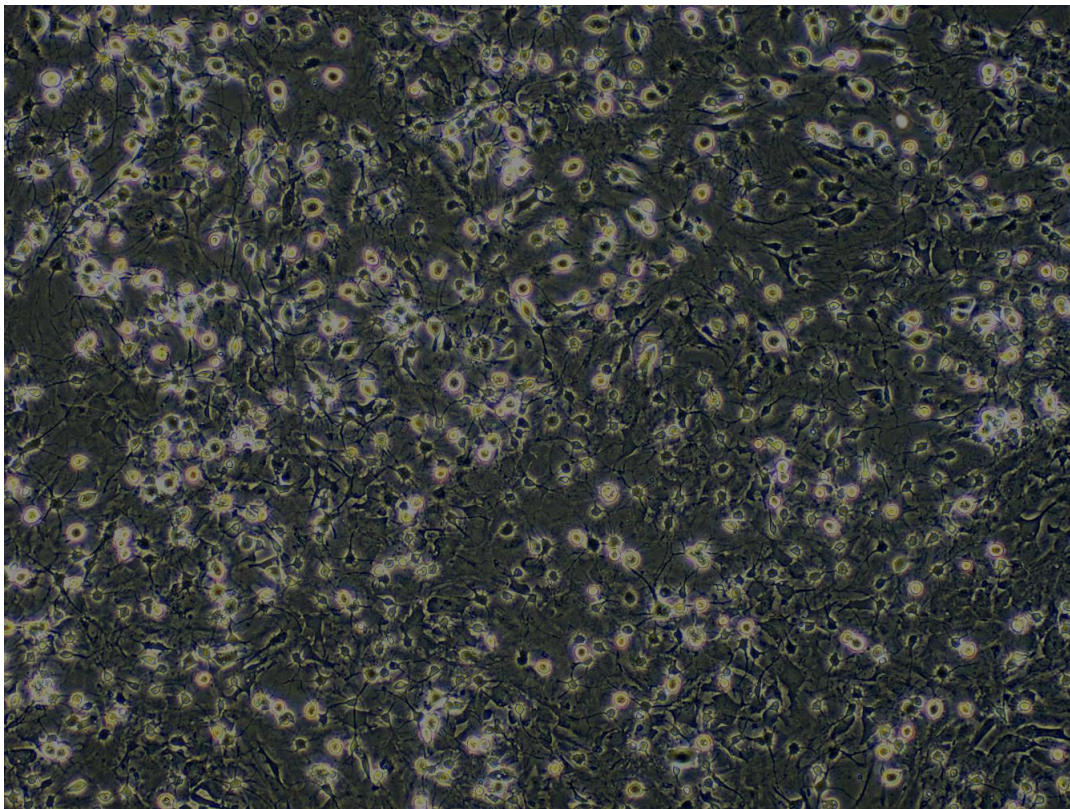


Figure 1 Morphology of Rat Neurons-spinal cord (Optical microscope,×100)