

**RPH480Hu01 10µg**

**Recombinant 3-Oxoacid Coenzyme A Transferase 1 (OXCT1)**

**Organism Species: *Homo sapiens* (Human)**

***Instruction manual***

FOR RESEARCH USE ONLY

NOT FOR USE IN CLINICAL DIAGNOSTIC PROCEDURES

---

12th Edition (Revised in Aug, 2016)

**[ PROPERTIES ]**

**Source:** Prokaryotic expression

**Host:** *E.coli*

**Residues:** Thr40~Leu489

**Tags:** N-terminal His Tag

**Subcellular Location:** Secreted

**Purity:** > 95%

**Traits:** Freeze-dried powder

**Buffer formulation:** PBS, pH7.4, containing 0.01% SKL, 5% Trehalose.

**Original Concentration:** 800µg/mL

**Applications:** Positive Control; Immunogen; SDS-PAGE; WB.

(May be suitable for use in other assays to be determined by the end user.)

**Predicted isoelectric point:** 6.3

**Predicted Molecular Mass:** 52.4kDa

**Accurate Molecular Mass:** 52kDa as determined by SDS-PAGE reducing conditions.

**[ USAGE ]**

Reconstitute in 10mM PBS (pH7.4) to a concentration of 0.1-1.0 mg/mL. Do not vortex.

**[ STORAGE AND STABILITY ]**

**Storage:** Avoid repeated freeze/thaw cycles.

Store at 2-8°C for one month.

Aliquot and store at -80°C for 12 months.

**Stability Test:** The thermal stability is described by the loss rate. The loss rate was determined by accelerated thermal degradation test, that is, incubate the protein at 37°C for 48h, and no obvious degradation and precipitation were observed. The loss rate is less than 5% within the expiration date under appropriate storage condition.

**[ SEQUENCE ]**

T KFYTDPVEAV

KDIPDGATVL VGGFGLCGIP ENLIDALLKT GVKGLTAVSN NAGVDNFGGLG  
 LLLRSKQIKR MVSSYVGENA EFERQYLSGE LEVELTPQGT LAERIRAGGA  
 GVPAFYTPTG YGTLVQEGGS PIKYNKDGSV AIASKPREVR EFNGQHFILE  
 EAITGDFALV KAWKADRAGN VIFRKSARNF NLPMCKAAET TVVEVEEIVD  
 IGAFAPEDIH IPQIYVHRLI KGEKYEKRIE RLSIRKEGDG EAKSAKPGDD  
 VRERIIKRAA LEFEDGMYAN LGIGIPLLAS NFISPNITVH LQSENGVLGL  
 GPYPRQHEAD ADLINAGKET VTILPGASFF SDESDEFAMIR GGHVDLTMLG  
 AMQVSKYGD L ANWMIPGKMV KGMGGAMD LV SSAKTKVVVT MEHSAKGNAH  
 KIMEKCTLPL TKGQCVNR II TEKAVFDV DK KKGLTLIEL

**[ IDENTIFICATION ]**

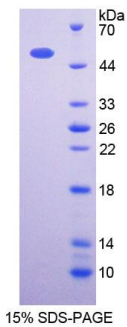


Figure. SDS-PAGE

**[ IMPORTANT NOTE ]**

The kit is designed for research use only, we will not be responsible for any issue if the kit was used in clinical diagnostic or any other procedures.