

RPG377Mu01 50µg

Recombinant ATPase, Ca⁺⁺ Transporting, Plasma Membrane 2 (ATP2B2)

Organism Species: *Mus musculus* (Mouse)

Instruction manual

FOR RESEARCH USE ONLY

NOT FOR USE IN CLINICAL DIAGNOSTIC PROCEDURES

12th Edition (Revised in Aug, 2016)

[PROPERTIES]

Source: Prokaryotic expression

Host: *E.coli*

Residues: Ala417~Ile830

Tags: N-terminal His and GST Tag

Subcellular Location: Membrane

Purity: > 80%

Traits: Freeze-dried powder

Buffer formulation: 20mM Tris, 150mM NaCl, pH8.0, containing 1mM EDTA, 1mM DTT, 0.01% SKL, 5% Trehalose .

Original Concentration: 200µg/mL

Applications: Positive Control; Immunogen; SDS-PAGE; WB.

(May be suitable for use in other assays to be determined by the end user.)

Predicted isoelectric point: 6.6

Predicted Molecular Mass: 75.8kDa

Accurate Molecular Mass: 76kDa as determined by SDS-PAGE reducing conditions.

[USAGE]

Reconstitute in 20mM Tris, 150mM NaCl (pH8.0) to a concentration of 0.1-1.0 mg/mL. Do not vortex.

[STORAGE AND STABILITY]

Storage: Avoid repeated freeze/thaw cycles.

Store at 2-8°C for one month.

Aliquot and store at -80°C for 12 months.

Stability Test: The thermal stability is described by the loss rate. The loss rate was determined by accelerated thermal degradation test, that is, incubate the protein at 37°C for 48h, and no obvious degradation and precipitation were observed. The loss rate is less than 5% within the expiration date under appropriate storage condition.

[SEQUENCE]

```

AVTI  SLAYSVKKMM  KDNNLVRHLD  ACETMGNATA
ICSDKTGTLT  TNRMVVQAY  VGDVHYKEIP  DPSSINAKTL  ELLVNAIAIN
SAYTTKILPP  EKEGALPRQV  GNKTECGLLG  FVLDLRQDYE  PVRSQMPEEK
LYKVYTFNSV  RKSMSTVIKM  PDESFRMYSK  GASEIVLKKC  CKILSGAGEA
RVFRPRDRDE  MVKKVIEPMA  CDGLRTICVA  YRDFPSSPEP  DWDNENDILN
ELTCICVVGI  EDPVRPEVPE  AIRKCQRAGI  TVRMVTGDNI  NTARAIAIKC
GIIHPGEDFL  CLEGKEFNRR  IRNEKGEIEQ  ERIDKIWPKL  RVLARSSPTD
KHTLVKGIID  STHTEQRQVV  AVTGDGTNDG  PALKKADVGF  AMGIAGTDVA
KEASDIILTD  DNFSSIVKAV  MWGRNVYDSI
  
```

[IDENTIFICATION]

ATGATCCCTGTCCTCTCTGACCAATCTGAGGAAATGATGAGGAGCAACCTGGTACCCCTCTGATGCTGTGGACCATGACCAATGCTGAGGAGAGGACCTGACCTGACCAATGATGCTGGTCCAGCCATGCTGGTGAATCTCTGAGCCTACTAAGAGGATCCCGATCCGATCCATCATCCAGCCCTGGACCTCTGGTACCCCA

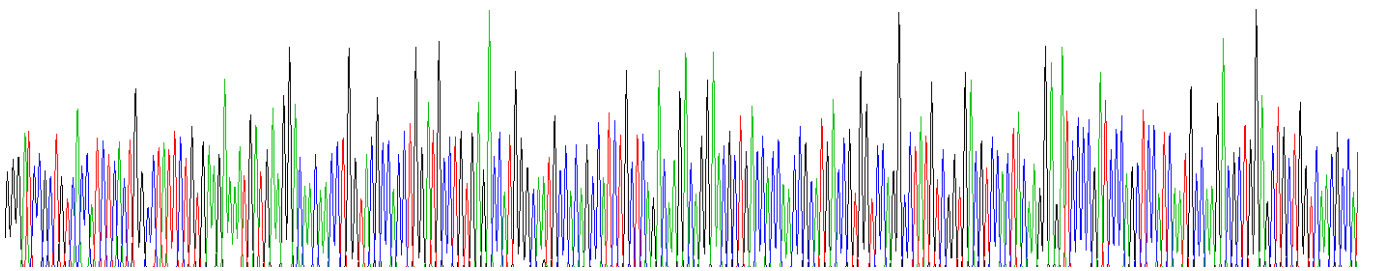


Figure . Gene Sequencing (extract)

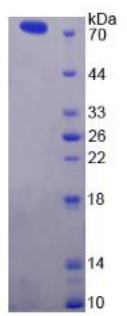


Figure. SDS-PAGE

[IMPORTANT NOTE]

The kit is designed for research use only, we will not be responsible for any issue if the kit was used in clinical diagnostic or any other procedures.