

RPG388Hu01 1

**Recombinant ATPase, H⁺ Transporting, Mitochondrial F1 Complex Alpha Polypeptide
(ATP5a)**

Organism Species: *Homo sapiens* (Human)

Instruction manual

FOR RESEARCH USE ONLY

NOT FOR USE IN CLINICAL DIAGNOSTIC PROCEDURES

13th Edition (Revised in Aug, 2023)

[PROPERTIES]

Source: Prokaryotic expression

Host: *E.coli*

Residues: Gln44~Ile526

Tags: N-terminal His Tag

Subcellular Location: Membrane, Mitochondrion

Purity: > 90%

Traits: Freeze-dried powder

Buffer formulation: PBS, pH7.4, containing 0.01% SKL, 5% Trehalose.

Original Concentration: 100µg

Applications: Positive Control; Immunogen; SDS-PAGE; WB.

(May be suitable for use in other assays to be determined by the end user.)

Predicted isoelectric point: 8.6

Predicted Molecular Mass: 56kDa

Accurate Molecular Mass: 56kDa as determined by SDS-PAGE reducing conditions.

[USAGE]

Reconstitute in 10mM PBS (pH7.4) to a concentration of 0.1-1.0 mg/mL. Do not vortex.

[STORAGE AND STABILITY]

Storage: Avoid repeated freeze/thaw cycles.

Store at 2-8°C for one month.

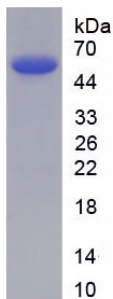
Aliquot and store at -80°C for 12 months.

Stability Test: The thermal stability is described by the loss rate. The loss rate was determined by accelerated thermal degradation test, that is, incubate the protein at 37°C for 48h, and no obvious degradation and precipitation were observed. The loss rate is less than 5% within the expiration date under appropriate storage condition.

[SEQUENCE]

QKTGTAE
MSSILEERI LGADTSVDLE ETGRVLSIGD GIARVHGLRN VQAEEMVEFS S
GLKGMSLN LEPDNVGVVV FGNDKLIKEG DIVKRTGAIV DVPVGEELG RV
VDALGNA IDGKGPIGSK TRRRVGLKAP GIIPRISVRE PMQTGIKAVD SLV
PIGRGQ RELIIGDRQT GKTSIAIDTI INQKRFNDGS DEKKKLYCIY VAIG
QKRST VAQLVKRLTD ADAMKYTIWV SATASDAAPL QYLAPYSGCS MGEYF
RDNG KHALIYDDL SKQAVAYRQM SLLRRPFCR EAYI 编辑栏 HSRLLLE
RAA KMNDAPGGGS LTALPVIETQ AGDVSAYIPT NVISITDGQT FLETELF
YK GIRPAINVGL SVSRVGSAAQ TRAMKQVAGT MKLELAQYRE VAAFAQFG
S DLDAATQQLL SRGVRLELL KQGQYSPMAI EEQVAVIYAG VRGYLDKLE
PSKITKFENA FLSHVVSQHQ ALLGTI

[IDENTIFICATION]



[IMPORTANT NOTE]

The kit is designed for research use only, we will not be responsible for any issue if the kit was used in clinical diagnostic or any other procedures.