

RPA002Hu01 10ug
Recombinant Activated Leukocyte Cell Adhesion Molecule (ALCAM)
Organism Species: *Homo sapiens (Human)*
Instruction manual

FOR RESEARCH USE ONLY
NOT FOR USE IN CLINICAL DIAGNOSTIC PROCEDURES

12th Edition (Revised in Aug, 2016)

[PROPERTIES]

Source: Prokaryotic expression

Host: *E.coli*

Residues: Trp28~Leu528

Tags: N-terminal His Tag

Subcellular Location: Membrane, Secreted

Purity: > 90%

Traits: Freeze-dried powder

Buffer formulation: PBS, pH7.4, containing 0.01% SKL, 5% Trehalose.

Original Concentration: 250µg/mL

Applications: Positive Control; Immunogen; SDS-PAGE; WB.

(May be suitable for use in other assays to be determined by the end user.)

Predicted isoelectric point: 5.2

Predicted Molecular Mass: 59.9kDa

Accurate Molecular Mass: 60kDa as determined by SDS-PAGE reducing conditions.

[USAGE]

Reconstitute in 10mM PBS (pH7.4) to a concentration of 0.1-1.0 mg/mL. Do not vortex.

[STORAGE AND STABILITY]

Storage: Avoid repeated freeze/thaw cycles.

Store at 2-8°C for one month.

Aliquot and store at -80°C for 12 months.

Stability Test: The thermal stability is described by the loss rate. The loss rate was determined by accelerated thermal degradation test, that is, incubate the protein at 37°C for 48h, and no obvious degradation and precipitation were observed. The loss rate is less than 5% within the expiration date under appropriate storage condition.

[SEQUENCE]

```

WYT VNSAYGDTII IPCRLDVPQN
LMFGKWKYEK PDGSPVFI AF RSSTKKS VQY DDVPEYKDRL NLENYTL SI
SNARISDEKR FVCMLVTE DN VFEAPTIVKV FKQPSKPEIV SKALFLETEQ
LKKLGDCISE DSYPDGNITW YRNGKVLHPL EGAVVIIFKK EMDPVTQLYT
MTSTLEYKTT KADIQMPFT C SVTYYGPSGQ KTIHSEQAVF DIYYPTEQVT
IQVLPKNAI KEGDNITLKC LGNGNPPPEE FLFYLPQPE GIRSSNTYTL
TDVRRNATGD YKCSLIDKKS MIASTAITVH YLDLSLNPSG EVTRQIGDAL
PVSC TISASR NATVVW MKDN IRLRSSPSFS SLHYQDAGNY VCETALQEVE
GLKKRESLTL IVEGKPQIKM TKKTDP SGLS KTIICHVEGF PKPAIQWTIT
GSGSVINQTE ESPYINGRYY SKIIISPEEN VTLTCTAENQ LERTVNSLNV
SAISIP E HDE ADEISDENRE KVNDQAKL

```

[IDENTIFICATION]

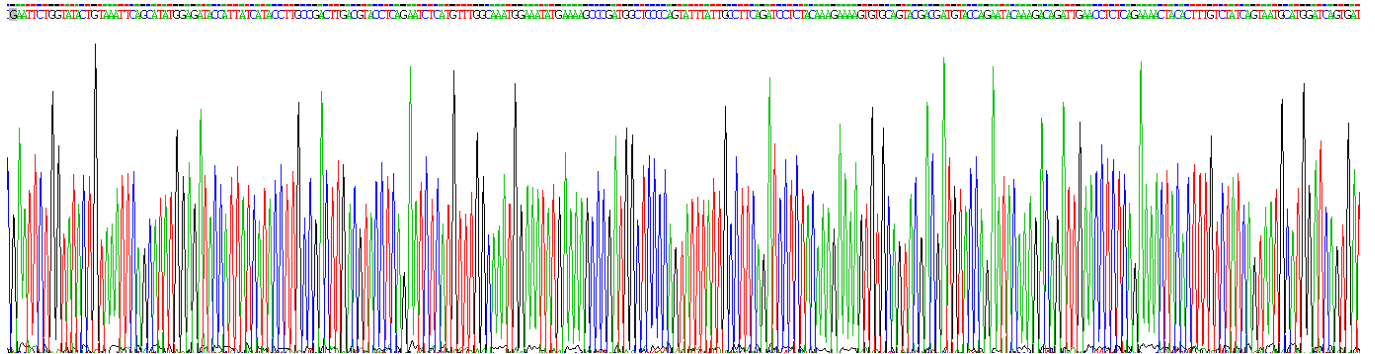
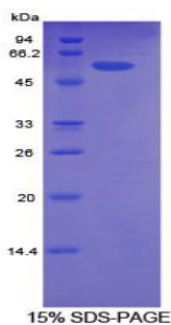


Figure . Gene Sequencing (extract)



[IMPORTANT NOTE]

The kit is designed for research use only, we will not be responsible for any issue if the kit was used in clinical diagnostic or any other procedures.