

RPA002Mu01 100µg
Recombinant Activated Leukocyte Cell Adhesion Molecule (ALCAM)
Organism Species: *Mus musculus* (Mouse)
Instruction manual

FOR RESEARCH USE ONLY
NOT FOR USE IN CLINICAL DIAGNOSTIC PROCEDURES

13th Edition (Revised in Aug, 2023)

[PROPERTIES]

Source: Prokaryotic expression

Host: *E.coli*

Residues: Trp28~Lys527

Tags: N-terminal His Tag

Subcellular Location: Membrane

Purity: > 97%

Traits: Freeze-dried powder

Buffer formulation: PBS, pH7.4, containing 0.01% SKL, 5% Trehalose .

Original Concentration: 200µg/mL

Applications: Positive Control; Immunogen; SDS-PAGE; WB.

(May be suitable for use in other assays to be determined by the end user.)

Predicted isoelectric point: 5.7

Predicted Molecular Mass: 59.8kDa

Accurate Molecular Mass: 60kDa as determined by SDS-PAGE reducing conditions.

[USAGE]

Reconstitute in 10mM PBS (pH7.4) to a concentration of 0.1-1.0 mg/mL. Do not vortex.

[STORAGE AND STABILITY]

Storage: Avoid repeated freeze/thaw cycles.

Store at 2-8°C for one month.

Aliquot and store at -80°C for 12 months.

Stability Test: The thermal stability is described by the loss rate. The loss rate was determined by accelerated thermal degradation test, that is, incubate the protein at 37°C for 48h, and no obvious degradation and precipitation were observed. The loss rate is less than 5% within the expiration date under appropriate storage condition.

[SEQUENCE]

```

                                WYT VNSAYGDTIV MPCRLDVPQN LMF GKWKYEK
PDGSPVFI AF RSSTKKS VQY DDVPEYKDRL S LSENYT LSI ANAKISDEKR FVCMLVTEDN
VFEAPTLVKV FKQPSKPEIV NKAPFLETDQ LKKLGDCISR DSYPDGNITW YRNGKVLQPV
EGEVAILFKK EIDPGTQLYT VTSSLEYKTT RSDIQMPFTC SVTYYGPSGQ KTIYSEQEIF
DIYYPTEQVT IQVLPPKNAI KEGDNITLQC LGNGNPPPEE FMPYLPGQPE GIRSSNTYTL
TDVRRNATGD YKCSLIDKRN MAASTTITVH YLDLSLNPSG EVTKQIGDTL PVSCTISASR
NATVVMKDN IRLRSSPFS SLHYQDAGNY VCETALQEVE GLKKRESLTL IVEGKPKIKM
TKKTDPSGLS KTIICHVEGF PKPAIHWIT GSGSVINQTE ESPYINGRY SKIIISPEEN
VTLTCTAENQ LERTVNSLNV SAISIPEHDE ADDISDENRE KVNDQAK
    
```

[IDENTIFICATION]

TGGTCACTGTCAACTGACGATATGGAGAGACCAATTGTCAATGCTTGGCGTCTGGATGTAAGTCTGAGAACTCACTGTTGGCAATGCAATATGAAAGCCGATGGGTCCGAGTATTATTTCATTCGATCTTCAGGAGAAAGTGTGAGATGATGATCTCCAGACTACAGGACAGACTGAGCGCTCTGAGAAACTGACT
V Y T V N S A Y G D T I V M P C R L D V P Q N L M F G K W K Y E K P D G S P V F I A F R S S T K K S V Q Y D D V P E Y K D R L S L S E N Y T

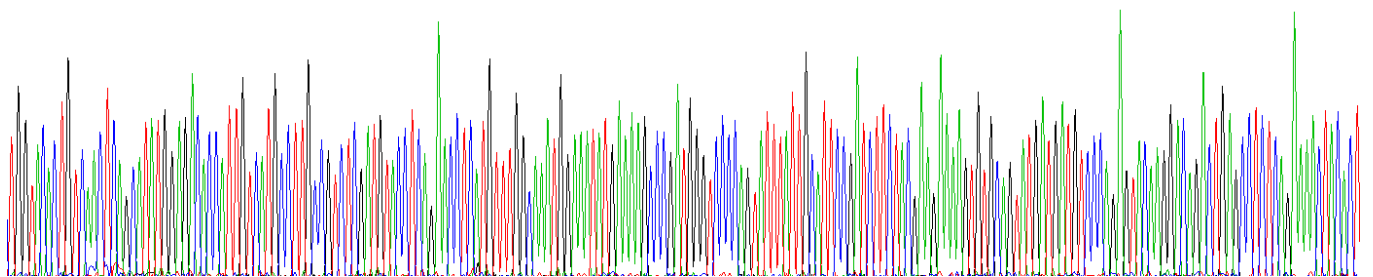
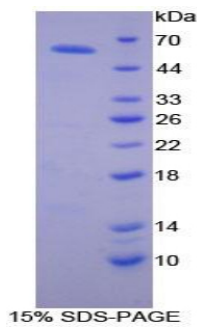


Figure. Gene Sequencing (Extract)



[IMPORTANT NOTE]

The kit is designed for research use only, we will not be responsible for any issue if the kit was used in clinical diagnostic or any other procedures.