

RPC116Hu01 200µg

Recombinant Activin A Receptor Type I C (ACVR1C)

Organism Species: *Homo sapiens (Human)*

Instruction manual

FOR RESEARCH USE ONLY

NOT FOR USE IN CLINICAL DIAGNOSTIC PROCEDURES

13th Edition (Revised in Aug, 2023)

[PROPERTIES]

Source: Prokaryotic expression

Host: *E.coli*

Residues: Glu21~Ala493

Tags: N-terminal His Tag

Subcellular Location: Membrane

Purity: > 90%

Traits: Freeze-dried powder

Buffer formulation: PBS, pH7.4, containing 0.01% SKL, 5% Trehalose.

Original Concentration: 150µg/mL

Applications: Positive Control; Immunogen; SDS-PAGE; WB.

(May be suitable for use in other assays to be determined by the end user.)

Predicted isoelectric point: 8.0

Predicted Molecular Mass: 56.5kDa

Accurate Molecular Mass: 57kDa as determined by SDS-PAGE reducing conditions.

[USAGE]

Reconstitute in 10mM PBS (pH7.4) to a concentration of 0.1-1.0 mg/mL. Do not vortex.

[STORAGE AND STABILITY]

Storage: Avoid repeated freeze/thaw cycles.

Store at 2-8°C for one month.

Aliquot and store at -80°C for 12 months.

Stability Test: The thermal stability is described by the loss rate. The loss rate was determined by accelerated thermal degradation test, that is, incubate the protein at 37°C for 48h, and no obvious degradation and precipitation were observed. The loss rate is less than 5% within the expiration date under appropriate storage condition.

[SEQUENCE]

```

                                ELSPLGLKVCV  LLCSSNFTC  QTEGACWASV
MLTNGKEQVI  KSCVSLPELN  AQVFCHSSNN  VTKTECCFTD  FCNNITLHLP
TASPNAKLG  PMELAIITV  PVCLLSIAAM  LTVWACQGRQ  CSYRKKRPN
VEEPLSECNL  VNAGKTLKDL  IYDVTASGSG  SGLPLLQRT  IARTIVLQEI
VGKGRFGEVW  HGRWCGEDVA  VKIFSSRDER  SWFREAEIYQ  TVMLRHENIL
GFIAADNKDN  GTWTQLWLVS  EYHEQGSLYD  YLNRNIVTVA  GMIKLALSIA
SGLAHLHMEI  VGTQGKPAIA  HRDIKSKNIL  VKKCETCAIA  DLGLAVKHDS
ILNTIDIPQN  PKVGTKRYMA  PEMLDDTMNV  NIFESFKRAD  IYSVGLVYWE
IARRCSVGGI  VEEYQLPYD  MVPSPSIEE  MRKVCDQKF  RPSIPNQWS
CEALRVMGRI  MRECWYANGA  ARLTALRIK  TISQLCVKED  CKA
    
```

[IDENTIFICATION]

CGATTGGATCTGGGCTGAGGGGATGCTTTGGGATCTCAACTTACTCCAAAGAGGGGATGTTGGGATGAGTGTACCAATGGAAAGGAGGATCAATCTGGTCTCTCGAGCTGATGCTCAAGCTCTGGATAGTTCACATGCTTCAAAACCGATCTCTCAGATTTTGCACACATAGCTGCCTCGAG

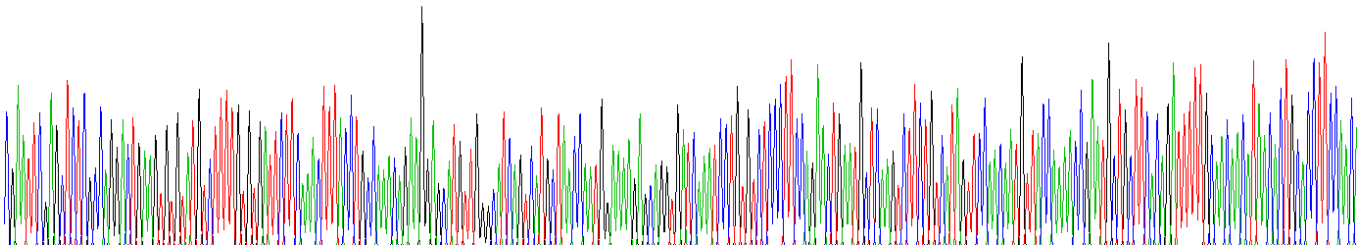
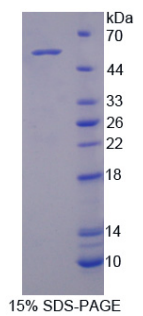


Figure . Gene Sequencing (extract)



[IMPORTANT NOTE]

The kit is designed for research use only, we will not be responsible for any issue if the kit was used in clinical diagnostic or any other procedures.