

RPB065Hu01 50µg

Recombinant Alanine Aminopeptidase (AAP)

Organism Species: *Homo sapiens (Human)*

Instruction manual

FOR RESEARCH USE ONLY

NOT FOR USE IN CLINICAL DIAGNOSTIC PROCEDURES

13th Edition (Revised in Aug, 2023)

[PROPERTIES]

Source: Prokaryotic expression

Host: *E.coli*

Residues: Asn581~Asn738

Tags: N-terminal His Tag

Subcellular Location: Membrane, Chromosome

Purity: > 97%

Traits: Freeze-dried powder

Buffer formulation: 100mMNaHCO₃, 500mMNaCl, pH8.3, containing 0.01% SKL, 5% Trehalose.

Original Concentration: 200µg/mL

Applications: Positive Control; Immunogen; SDS-PAGE; WB.

(May be suitable for use in other assays to be determined by the end user.)

Predicted isoelectric point: 9.2

Predicted Molecular Mass: 22.4kDa

Accurate Molecular Mass: 22kDa as determined by SDS-PAGE reducing conditions.

[USAGE]

Reconstitute in ddH₂O to a concentration of 0.1-1.0 mg/mL. Do not vortex.

[STORAGE AND STABILITY]

Storage: Avoid repeated freeze/thaw cycles.

Store at 2-8°C for one month.

Aliquot and store at -80°C for 12 months.

Stability Test: The thermal stability is described by the loss rate. The loss rate was determined by accelerated thermal degradation test, that is, incubate the protein at 37°C for 48h, and no obvious degradation and precipitation were observed. The loss rate is less than 5% within the expiration date under appropriate storage condition.

[SEQUENCE]

NYVWIVPITS IRDGRQQDY
 WLIDVRAQND LFSTSGNEWV LLNLNVTGYV RVNYDEENWR KIQTQLQRDH
 SAIPVINRAQ IINDAFNLAS AHKVPVTLAL NNTLFLIEER QYMPWEAALS
 SLSYFKLMFD RSEVYGPMKN YLKKQVTPLF IHFRNNTN

[IDENTIFICATION]

TACTAGTGTGGATTGTGGCATCACTGGTCAGAGATGGCAGACAGCAGGACTACTGGCTGATAGATGTAAGAGCCAGAGAGATCTCTTCAGCACATGGGCAATGAGTGGTCTCTGAACTCAATGTGAGGGCTATTACGGGTGAACTAGAGAGAGAACTGGAGSAGATTGAGCTCAGCTCAGK
 N Y V W I V P I T S V R D G R Q Q D Y V L I D V R A Q N D L F S T S G N E W V L L N L N V T G Y Y R V N Y D E E N W R K I Q T Q L Q R

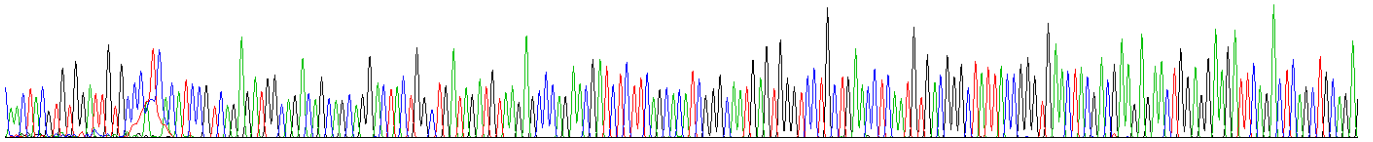
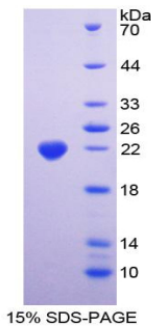


Figure. Gene Sequencing (Extract)



[IMPORTANT NOTE]

The kit is designed for research use only, we will not be responsible for any issue if the kit was used in clinical diagnostic or any other procedures.