

**RPA207Mu02 100µg**  
**Recombinant Alanine Aminotransferase (ALT)**  
**Organism Species: *Mus musculus* (Mouse)**  
***Instruction manual***

FOR RESEARCH USE ONLY  
NOT FOR USE IN CLINICAL DIAGNOSTIC PROCEDURES

---

12th Edition (Revised in Aug, 2016)

**[ PROPERTIES ]**

**Source:** Prokaryotic expression

**Host:** *E.coli*

**Residues:** Ala2~Ser496

**Tags:** N-terminal His Tag

**Subcellular Location:** Cytoplasm

**Purity:** > 90%

**Traits:** Freeze-dried powder

**Buffer formulation:** 20mM Tris, 150mM NaCl, pH8.0, containing 0.01% SKL, 5% Trehalose.

**Original Concentration:** 200µg/mL

**Applications:** Positive Control; Immunogen; SDS-PAGE; WB.

(May be suitable for use in other assays to be determined by the end user.)

**Predicted isoelectric point:** 6.6

**Predicted Molecular Mass:** 58.7kDa

**Accurate Molecular Mass:** 59kDa as determined by SDS-PAGE reducing conditions.

**[ USAGE ]**

Reconstitute in 20mM Tris, 150mM NaCl (pH8.0) to a concentration of 0.1-1.0 mg/mL. Do not vortex.

**[ STORAGE AND STABILITY ]**

**Storage:** Avoid repeated freeze/thaw cycles.

Store at 2-8°C for one month.

Aliquot and store at -80°C for 12 months.

**Stability Test:** The thermal stability is described by the loss rate. The loss rate was determined by accelerated thermal degradation test, that is, incubate the protein at 37°C for 48h, and no obvious degradation and precipitation were observed. The loss rate is less than 5% within the expiration date under appropriate storage condition.

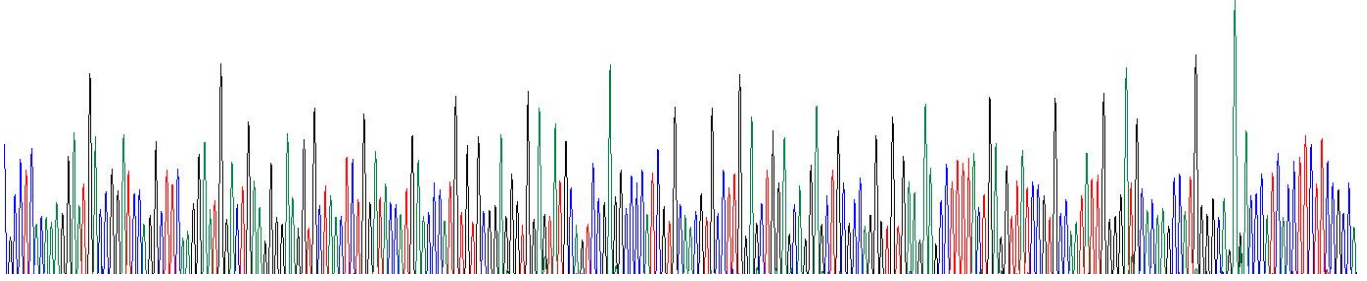
**[ SEQUENCE ]**

```

ASQRNDRIQ ASRNLKLGKV LTLDTMNPCV RRVEYAVRGP IVQRALELEQ
ELRQGVKKPF TEVIRANIGD AQAMGQRPIT FFRQVLALCV YPNLLSSPDF
PEDAKRRAER ILQACGGHSL GAYSISSGIQ PIREQVAQYI ERRDGGIPAD
PNNIFLSTGA SDAIVTMLKL LVAGEGRART GVLIPQYYP LYSAAALAE
AVQVDYYLDE ERAWALDIAE LRRALCQARD RCCPRVLCVI NPGNPTGQVQ
TRECIEAVIR FAFEEGLFLM ADEVYQDNVY AEGSQFHSFK KVLTEMGPPY
ATQQELASFH SVSKGYMGEC GFRGGYVEVV NMDAEVQKQM AKLMSVRLCP
PVPQALMGM VVSPPTPSEP SFKQFQAERQ EVLAELAACA KLTEQVFNEA
PGIRCNPVQG AMYSFPQIQL PLKAVQRAQD LGLAPDMFFC LCLLEETGIC
VVPGSGFGQQ EGTYHFRMTI LPPMEKLRVL LEKLRHFHAK FTHEYS
    
```

**[ IDENTIFICATION ]**

TGCCTCGAGGATGCTCCGATCCAGCTTCAGGATGGCTGAGGGGAGGTCTTACTCTGGATTCATGACCCATGTGTGTGGGGGGTGGAGTATGCACTCCAGGTCCTCGTGGCTTGGAGCTGGAGCTGGAGCTTCGCGGGTGGAGGAGCCCTTTCTGAGGATACCGTCCCATATTGGGATGCACAGCCATGGGGCAGAACCCATGCTCTTCTTCGCGC  
 ASQRNDRIQASRNLKLGKGVLTLLDTMNPCVRRVEYAVRGPPIVQRALELEQELRQGVKKPFTEVIRANIGDAQAMGQKPIITFFRQ



**Figure. Gene Sequencing (Extract)**

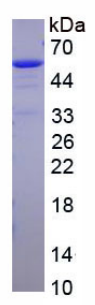


Figure. SDS-PAGE

**[ IMPORTANT NOTE ]**

The kit is designed for research use only, we will not be responsible for any issue if the kit was used in clinical diagnostic or any other procedures.