

**RPE862Hu01 1mg**

**Recombinant Alcohol Dehydrogenase 3 (ADH3)**

**Organism Species: *Homo sapiens (Human)***

***Instruction manual***

FOR RESEARCH USE ONLY

NOT FOR USE IN CLINICAL DIAGNOSTIC PROCEDURES

---

13th Edition (Revised in Aug, 2023)

**[ PROPERTIES ]**

**Source:** Prokaryotic expression

**Host:** *E.coli*

**Residues:** Met1~Phe375

**Tags:** N-terminal His Tag

**Subcellular Location:** Cytoplasm

**Purity:** > 80%

**Traits:** Freeze-dried powder

**Buffer formulation:** PBS, pH7.4, containing 0.01% SKL, 5% Trehalose .

**Original Concentration:** 1000µg/mL

**Applications:** Positive Control; Immunogen; SDS-PAGE; WB.

(May be suitable for use in other assays to be determined by the end user.)

**Predicted isoelectric point:** 8.4

**Predicted Molecular Mass:** 43.4kDa

**Accurate Molecular Mass:** 43kDa as determined by SDS-PAGE reducing conditions.

**[ USAGE ]**

Reconstitute in 10mM PBS (pH7.4) to a concentration of 0.1-1.0 mg/mL. Do not vortex.

**[ STORAGE AND STABILITY ]**

**Storage:** Avoid repeated freeze/thaw cycles.

Store at 2-8°C for one month.

Aliquot and store at -80°C for 12 months.

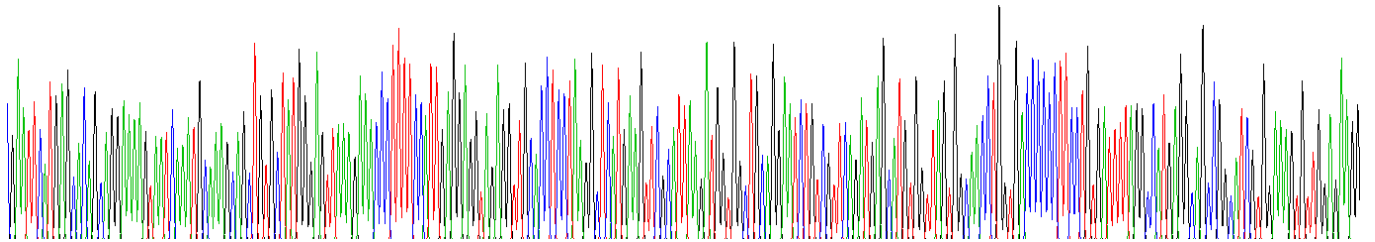
**Stability Test:** The thermal stability is described by the loss rate. The loss rate was determined by accelerated thermal degradation test, that is, incubate the protein at 37°C for 48h, and no obvious degradation and precipitation were observed. The loss rate is less than 5% within the expiration date under appropriate storage condition.

**[ SEQUENCE ]**

MSTAGKVIKCKAAVLWELKKPFSIEEVEVAPPKAHEVRIKMVAAGICRSDEHVVSGNLVTPLPVILGHEA  
 AGIVESVVGEGVTTVKPGDKVIPLFTPQCGKCRICKNPESNYCLKNDLGNPRGTLQDGTTRRFTCSGKPIHH  
 FVGVSTFSQYTVVDENAVAKIDAASPLEKVCLIGCGFSTGYGSAVKVAKVTPGSTCAVFLGGVGLSVVM  
 GCKAAGAARI IAVDINKDKFAKAKELGATECINPQDYKKPIQEVLKEMTDGGVDF SFEVIGRLDTMMASL  
 LCHEACGTSVI VGVPPDSQNL SINPMLLLTGRTWKGAIFGGFKSKESV PKLVADFM AKKFSLDALITNI  
 LPFEKINEGFDLLRSGKSIRT VLT F

**[ IDENTIFICATION ]**

G A T T C T G G C C C A G G A A C T A T C A A T C A A G C G T G C T A T G G G G T A A G A A C C T T T C A T T G G G G C T A G C C T C C C T A A G C C T C A G G T C C A T T A G T G T G C C G A T C T G T C A G T G C A T G T C T A G G C C A A C T G G C C C C T T C C G C A T T A G C C C T G C C A C C C C A T T G C G A A G G T T G C A A G G



**Figure . Gene Sequencing (extract)**

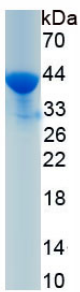


Figure. SDS-PAGE

**[ IMPORTANT NOTE ]**

The kit is designed for research use only, we will not be responsible for any issue if the kit was used in clinical diagnostic or any other procedures.