

**RPE824Hu01 50µg**

**Recombinant Aldehyde Dehydrogenase 1 Family, Member A1 (ALDH1A1)**

**Organism Species: *Homo sapiens (Human)***

***Instruction manual***

FOR RESEARCH USE ONLY

NOT FOR USE IN CLINICAL DIAGNOSTIC PROCEDURES

---

13th Edition (Revised in Aug, 2023)

**[ PROPERTIES ]**

**Source:** Prokaryotic expression

**Host:** *E.coli*

**Residues:** Ser2~Ser501

**Tags:** N-terminal His Tag

**Subcellular Location:** Cytoplasm

**Purity:** > 80%

**Traits:** Freeze-dried powder

**Buffer formulation:** PBS, pH7.4, containing 0.01% SKL, 5% Trehalose .

**Original Concentration:** 100µg/mL

**Applications:** Positive Control; Immunogen; SDS-PAGE; WB.

(May be suitable for use in other assays to be determined by the end user.)

**Predicted isoelectric point:** 6.3

**Predicted Molecular Mass:** 58.4kDa

**Accurate Molecular Mass:** 58kDa as determined by SDS-PAGE reducing conditions.

**[ USAGE ]**

Reconstitute in 10mM PBS (pH7.4) to a concentration of 0.1-1.0 mg/mL. Do not vortex.

**[ STORAGE AND STABILITY ]**

**Storage:** Avoid repeated freeze/thaw cycles.

Store at 2-8°C for one month.

Aliquot and store at -80°C for 12 months.

**Stability Test:** The thermal stability is described by the loss rate. The loss rate was determined by accelerated thermal degradation test, that is, incubate the protein at 37°C for 48h, and no obvious degradation and precipitation were observed. The loss rate is less than 5% within the expiration date under appropriate storage condition.

**[ SEQUENCE ]**

SSSGTPDLP VLLTDLKIQY TKIFINNEWH DSVSGKKFPV FNPATEEELC  
 QVEEGDKEDV DKA VKAARQA FQIGSPWRM DASERGRLLY KLADLIERDR  
 LLLATMESMN GGLYSNAYL NDLAGCIKTL RYCAGWADKI QGRTIPIDGN  
 FFTYTRHEPI GVCQIIPWN FPLVMLIWKI GPALSCGNTV VVKPAEQTPL  
 TALHVASLIK EAGFPPGVVN IVPGYGPTAG AAISSHMDID KVAFTGSTEV  
 GKLIKEAAGK SNLKRVTLEL GGKSPCIVLA DADLDNAVEF AHHGVFYHQG  
 QCCIAASRIF VEESYDEFV RRSVERAKKY ILGNPLTPGV TQGPQIDKEQ  
 YDKILD LIES GKKEGAKLEC GGGPWGNKGY FVQPTVFSNV TDEMRIA KEE  
 IFGPVQQIMK FKSLDDVIKR ANNTFYGLSA GVFTKDIDKA ITISSALQAG  
 TVWVNCYGVV SAQCPF GGFK MSGNGRELGE YGFHEYTEVK TVTVKISQKN  
 S

[ IDENTIFICATION ]

GAATCTCATCTCGAGCCGCTGACTTACCTGCTACTCCGCTTTCAGATTCAATATACAGATCTCTCAGACGCTGATGCTTCACTGAGTGGAGATTCCTGCTTAAATCTGCACTGGAGGAGCTCTCCGCTGAGAGGAGGATAGGGAGGATGTCAGAGCAGAGAGCCGAGCAGCAGCTTTTCAATGCAATCCCGAGGACTATGGATG

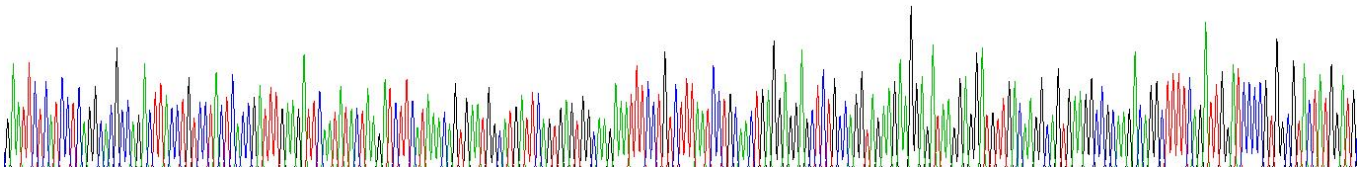


Figure . Gene Sequencing (extract)

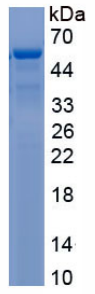


Figure. SDS-PAGE

[ IMPORTANT NOTE ]

The kit is designed for research use only, we will not be responsible for any issue if the kit was used in clinical diagnostic or any other procedures.