

RPE825Hu01 10µg

Recombinant Aldehyde Dehydrogenase 1 Family, Member A2 (ALDH1A2)

Organism Species: *Homo sapiens (Human)*

Instruction manual

FOR RESEARCH USE ONLY

NOT FOR USE IN CLINICAL DIAGNOSTIC PROCEDURES

12th Edition (Revised in Aug, 2016)

[PROPERTIES]

Source: Prokaryotic expression

Host: *E.coli*

Residues: Met1~Ser422

Tags: N-terminal His Tag

Subcellular Location: Cytoplasm

Purity: > 97%

Traits: Freeze-dried powder

Buffer formulation: 100mMNaHCO₃, 500mMNaCl, pH8.3, containing 0.01% SKL, 5% Trehalose.

Original Concentration: 150µg/mL

Applications: Positive Control; Immunogen; SDS-PAGE; WB.

(May be suitable for use in other assays to be determined by the end user.)

Predicted isoelectric point: 6.0

Predicted Molecular Mass: 49.8kDa

Accurate Molecular Mass: 50kDa as determined by SDS-PAGE reducing conditions.

[USAGE]

Reconstitute in ddH₂O to a concentration of 0.1-1.0 mg/mL. Do not vortex.

[STORAGE AND STABILITY]

Storage: Avoid repeated freeze/thaw cycles.

Store at 2-8°C for one month.

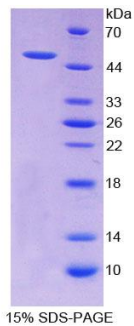
Aliquot and store at -80°C for 12 months.

Stability Test: The thermal stability is described by the loss rate. The loss rate was determined by accelerated thermal degradation test, that is, incubate the protein at 37°C for 48h, and no obvious degradation and precipitation were observed. The loss rate is less than 5% within the expiration date under appropriate storage condition.

[SEQUENCE]

MDASERGRLL DKLADLVERD RAVLATMESL NGGKPFLQAF YVDLQGVIKT
FRYYAGWADK IHGMTIPVDG DYFTFTRHEP IGVCQIIPW NFPLLMFAWK
IAPALCCGNT VVIKPAEQTP LSALYMGALI KEAGFPPGVI NILPGYGPTA
GAAIASHIGI DKIAFTGSTE VGKLIQEAAG RSNLKRVTLE LGGKSPNIIF
ADADLDYAVE QAHQGVFFNQ GQCCTAGSRI FVEESIYEEF VRRSVERAKR
RVVGSFPDPT TEQGPQIDKK QYNKILELIQ SGVAEGAKLE CGGKGLGRKG
FFIEPTVFSN VTDDMRIAKE EIFGPVQEIL RFKTMDEVIE RANNSDFGLV
AAVFTNDINK ALTVSSAMQA GTVWINCYNA LNAQSPFGGF KMSGNGREMG
EFGLEREYSEV KTVT VKIPQK NS

[IDENTIFICATION]



[IMPORTANT NOTE]

The kit is designed for research use only, we will not be responsible for any issue if the kit was used in clinical diagnostic or any other procedures.