

**RPE832Hu01 100ug**

**Recombinant Aldehyde Dehydrogenase 3 Family, Member B1 (ALDH3B1)**

**Organism Species: *Homo sapiens (Human)***

***Instruction manual***

FOR RESEARCH USE ONLY

NOT FOR USE IN CLINICAL DIAGNOSTIC PROCEDURES

---

13th Edition (Revised in Aug, 2023)

**[ PROPERTIES ]**

**Source:** Prokaryotic expression

**Host:** *E.coli*

**Residues:** Met1~Glu459

**Tags:** N-terminal His Tag

**Subcellular Location:** Membrane

**Purity:** > 90%

**Traits:** Freeze-dried powder

**Buffer formulation:** pH7.4, containing 0.01% SKL, 5% Trehalose

**Original Concentration:** 200µg/mL

**Applications:** Positive Control; Immunogen; SDS-PAGE; WB.

(May be suitable for use in other assays to be determined by the end user.)

**Predicted isoelectric point:** 7.6

**Predicted Molecular Mass:** 54.7kDa

**Accurate Molecular Mass:** 55kDa as determined by SDS-PAGE reducing conditions.

**[ USAGE ]**

Reconstitute in 10mM PBS (pH7.4) to a concentration of 0.1-1.0 mg/mL. Do not vortex

**[ STORAGE AND STABILITY ]**

**Storage:** Avoid repeated freeze/thaw cycles.

Store at 2-8°C for one month.

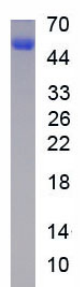
Aliquot and store at -80°C for 12 months.

**Stability Test:** The thermal stability is described by the loss rate. The loss rate was determined by accelerated thermal degradation test, that is, incubate the protein at 37°C for 48h, and no obvious degradation and precipitation were observed. The loss rate is less than 5% within the expiration date under appropriate storage condition.

**[ SEQUENCE ]**

MDPLGDTLRR LREAFHAGRT RPAEFRAAQL QGLGRFLQEN KQLLHDALAQ  
DLHKSAFES EVSEVAISQG EVTLALRNLR AWMKDERVPK NLATQLDSAF I  
RKEPFGLV LIIAPWNYPL NLTLVPLVGA LAAGNCVVLK PSEISKNVEK IL  
AEVLPQY VEQSCFAVVL GGPQETGQLL EHRFDYIFFT GSPRVGKIVM TAA  
AKHLTP VTLELGGKNP CYVDDNCDPQ TVANRVAWFR YFNAGQTCVA PDYV  
LCSPE MQRLLPALQ STITRFYGDD PQSSPNLGRI INQKQFQRLR ALLGC  
GRVA IGGQSDSDR YIAPTVLVDV QEMEPVMQEE IFGPILPIVN VQSLDE  
AIE FINRREKPLA LYAFSNSSQV VKRVLTQTSS GGFCGNDGFM HMTLASL  
PF GGVGASGMGR YHGKFSFDTF SHHRACLLRS PGMEKLNALR YPPQSPRR  
L RMLLVAME

**[ IDENTIFICATION ]**



**[ IMPORTANT NOTE ]**

The kit is designed for research use only, we will not be responsible for any issue if the kit was used in clinical diagnostic or any other procedures.