

RPE837Mu01 100ug

Recombinant Aldehyde Dehydrogenase 7 Family, Member A1 (ALDH7A1)

Organism Species: *Mus musculus* (Mouse)

Instruction manual

FOR RESEARCH USE ONLY

NOT FOR USE IN CLINICAL DIAGNOSTIC PROCEDURES

13th Edition (Revised in Aug, 2023)

[PROPERTIES]

Source: Prokaryotic expression

Host: *E.coli*

Residues: Met29~Gln539 (Accession # Q9DBF1)

Tags: N-terminal His Tag

Subcellular Location: Nucleus, Mitochondrion, Cytoplasm

Purity: > 97%

Traits: Freeze-dried powder

Buffer formulation: PBS, pH7.4, containing 0.01% SKL, 5% Trehalose.

Original Concentration: 200µg/mL

Applications: Positive Control; Immunogen; SDS-PAGE; WB.

(May be suitable for use in other assays to be determined by the end user.)

Predicted isoelectric point: 5.8

Predicted Molecular Mass: 56.9kDa

Accurate Molecular Mass: 57kDa as determined by SDS-PAGE reducing conditions.

[USAGE]

Reconstitute in 10mM PBS (pH7.4) to a concentration of 0.1-1.0 mg/mL. Do not vortex.

[STORAGE AND STABILITY]

Storage: Avoid repeated freeze/thaw cycles.

Store at 2-8°C for one month.

Aliquot and store at -80°C for 12 months.

Stability Test: The thermal stability is described by the loss rate. The loss rate was determined by accelerated thermal degradation test, that is, incubate the protein at 37°C for 48h, and no obvious degradation and precipitation were observed. The loss rate is less than 5% within the expiration date under appropriate storage condition.

[SEQUENCE]

```
MS TLLIHPQYA WLQDLGLRED NEGVYNGSWG
GRGEVITTYC PANNEPIARV RQASLKDYEE TIGKAKKAWN IWADIPAPKR GEIVRKIGDA
FREKIQLLGR LVSLEMGKIL VEGIGEVQEY VDVCDAAGL SRMIGGPTLP SERPGHALIE
MWNPLGLVGI ITAFNFPVAV FGWNNALALI TGNVCLWKGA PTTSLVSVAV TKIIAQVLED
NLLPGAICSL VCGGADIGTT MARDERNLL SFTGSTQVGK EVALMVQERF GKSLLELGGN
NAIIAFEDAD LSLVWPSVLF AAVGTAGQRC TTVRRLFLHE SIHNEVDRL RSAYSQIRVG
NPWDPNIIYG PLHTKQAVSM FVRAVEEAKK QGGTVVYGGK VMDHPGNYVE PTIVTGLAHD
APIVHQETFA PILYVFKFQD EEEVFEWNNV VKQGLSSSIF TKDLGRIFRW LGPKGSDCGI
VNVNIPTSGA EIGGAFGGEK HTGGGRESGS DAWKQYMRRS TCTINYSTSL PLAQGIKFQ
```

[IDENTIFICATION]

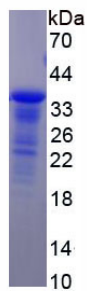


Figure. SDS-PAGE

[IMPORTANT NOTE]

The kit is designed for research use only, we will not be responsible for any issue if the kit was used in clinical diagnostic or any other procedures.