

RPE837Ra01 100ug
Recombinant Aldehyde Dehydrogenase 7 Family, Member A1 (ALDH7A1)
Organism Species: *Rattus norvegicus* (Rat)
Instruction manual

FOR RESEARCH USE ONLY
NOT FOR USE IN CLINICAL DIAGNOSTIC PROCEDURES

13th Edition (Revised in Aug, 2023)

[PROPERTIES]

Source: Prokaryotic expression

Host: *E.coli*

Residues: Leu28~Gln539 (Accession # Q64057)

Tags: N-terminal His Tag

Subcellular Location: Nucleus, Mitochondrion, Cytoplasm

Purity: > 95%

Traits: Freeze-dried powder

Buffer formulation: PBS, pH7.4, containing 0.01% SKL, 5% Trehalose.

Original Concentration: 200µg/mL

Applications: Positive Control; Immunogen; SDS-PAGE; WB.

(May be suitable for use in other assays to be determined by the end user.)

Predicted isoelectric point: 6.0

Predicted Molecular Mass: 57.0kDa

Accurate Molecular Mass: 57kDa as determined by SDS-PAGE reducing conditions.

[USAGE]

Reconstitute in 10mM PBS (pH7.4) to a concentration of 0.1-1.0 mg/mL. Do not vortex.

[STORAGE AND STABILITY]

Storage: Avoid repeated freeze/thaw cycles.

Store at 2-8°C for one month.

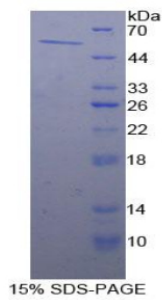
Aliquot and store at -80°C for 12 months.

Stability Test: The thermal stability is described by the loss rate. The loss rate was determined by accelerated thermal degradation test, that is, incubate the protein at 37°C for 48h, and no obvious degradation and precipitation were observed. The loss rate is less than 5% within the expiration date under appropriate storage condition.

[SEQUENCE]

```
LMS TLLIHHPOYA WLQDLGLRED NEGVFNGSWG
GRGEVITTYC PANNEPIARV RQASMKYEE TIGKAKKAWN IWADIPAPKR GEIVRKIGDA
LREKIQLLGR LVSLEMGKIL VEGIGEVQEY VDVCYAAGL SRMIGGPTLP SERPGHALME
QWNPLGLVGI ITAFNFPVAV FGWNNIALI TGNVCLWKA PTTSLVSIIV TKIIAKVLED
NLLPGAICSL TCGGADMGT MARDERNLL SFTGSTQVVK QVALMVQERF GKSLELGGN
NAIIAFEDAD LSLVLPALF AAVGTAGQRC TTVRRLFLHE SIHDEVVDR KNAYSQIRVG
NPWDPNILYG PLHTKQAVSM FVQAVEEAKK EGGTVVYGGK VMDHPGNYVE PTIVTGLVHD
APIVHKETFA PILYVFKFKN EEEVFEWNNE VKQGLSSSIF TKDLGRIFRW LGPKGSDCGI
VNVNIPTSGA EIGGAFGGEK HTGGGRESGS DAWKQYMRRS TCTINYSTAL PLAQGIKFQ
```

[IDENTIFICATION]



[IMPORTANT NOTE]

The kit is designed for research use only, we will not be responsible for any issue if the kit was used in clinical diagnostic or any other procedures.