

RPA153Hu02 10µg

Recombinant Alpha-Fetoprotein (AFP)

Organism Species: *Homo sapiens (Human)*

Instruction manual

FOR RESEARCH USE ONLY

NOT FOR USE IN CLINICAL DIAGNOSTIC PROCEDURES

13th Edition (Revised in Aug, 2023)

[PROPERTIES]

Source: Prokaryotic expression

Host: *E.coli*

Residues: Ile31~Ser576

Tags: Two N-terminal Tags, His-tag and SUMO-tag

Subcellular Location: Secreted

Purity: > 90%

Traits: Freeze-dried powder

Buffer formulation: 20mM Tris, 150mM NaCl, pH8.0, containing 0.01% skl, 5%Trehalose.

Original Concentration: 50µg/mL

Applications: Positive Control; Immunogen; SDS-PAGE; WB.

(May be suitable for use in other assays to be determined by the end user.)

Predicted isoelectric point: 5.5

Predicted Molecular Mass: 75.2kDa

Accurate Molecular Mass: 75kDa as determined by SDS-PAGE reducing conditions.

[USAGE]

Reconstitute in ddH₂O to a concentration of 0.1-0.3 mg/mL. Do not vortex.

[STORAGE AND STABILITY]

Storage: Avoid repeated freeze/thaw cycles.

Store at 2-8°C for one month.

Aliquot and store at -80°C for 12 months.

Stability Test: The thermal stability is described by the loss rate. The loss rate was determined by accelerated thermal degradation test, that is, incubate the protein at 37°C for 48h, and no obvious degradation and precipitation were observed. The loss rate is less than 5% within the expiration date under appropriate storage condition.

[SEQUENCE]

```

ILDSYQCTAE ISLADLATIF
FAQFVQEATY KEVSKMVKDA LTAIEKPTGD EQSSGLENQ LPAFLEELCH
EKEILEKYGH SDCCSQSEEG RHNCFLAHKK PTPASIPLFQ VPEPVSCEA
YEEDRETFMN KFIYEIARRH PFLYAPTILL WAARYDKIIP SCCKAENAVE
CFQTKAATVT KELRESSLLN QHACAVMKNF GTRTFQAITV TKLSQKFTKV
NFTEIQKLV L DVAHVHEHCC RGDVLDCLQD GEKIMSYICS QQDTLSNKIT
ECCKLTTLER GQCIIHAEND EKPEGLSPNL NRFLGDRDFN QFSSGEKNIF
LASFVHEYSR RHPQLAVSVI LRVAKGYQEL LEKCFQ TENP LECQDKGEEE
LQKYIQESQA LAKRSCGLFQ KLGEYYLQNA FLVAYTKKAP QLTSSSELMAI
TRKMAATAAT CCQLSEDKLL ACGEGAADII IGHLCIRHEM TPVNPVGVC
CTSSYANRRP CFSSLVDET YVPPAFSDDK FIFHKDLCQA QGVALQTMKQ
EFLINLVKQK PQITEEQLEA VIADFS

```

[IDENTIFICATION]

ILDSYQCTAEISLADLATIFFAQFVQEATYKEVSKMVKDALTAIEKPTGD EQSSGLENQLPAFLEELCHEKEILEKYGHSDCCSQSEEGRHNCF

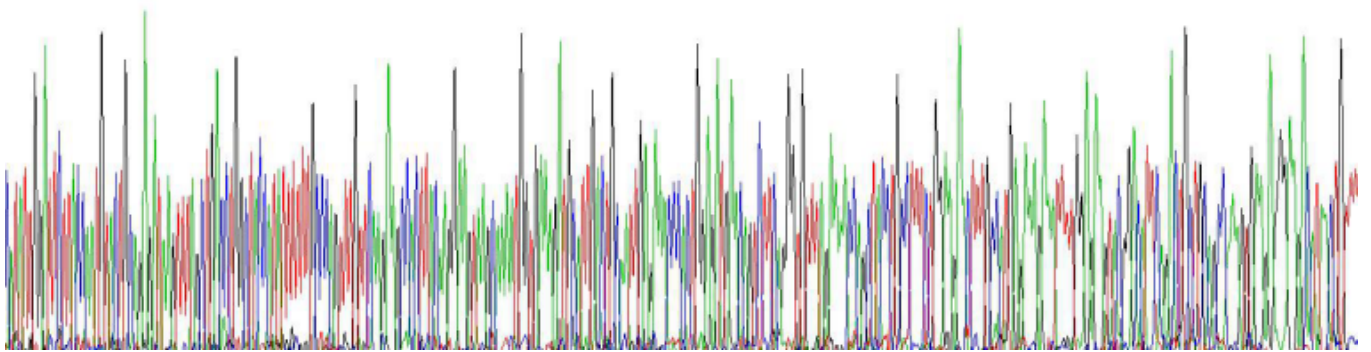


Figure. Gene Sequencing (Extract)

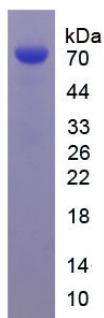


Figure. SDS-PAGE

[IMPORTANT NOTE]

The kit is designed for research use only, we will not be responsible for any issue if the kit was

used in clinical diagnostic or any other procedures.