

**RPB944Hu03 100µg**

**Recombinant Annexin A2 (ANXA2)**

**Organism Species: *Homo sapiens (Human)***

***Instruction manual***

FOR RESEARCH USE ONLY

NOT FOR USE IN CLINICAL DIAGNOSTIC PROCEDURES

---

12th Edition (Revised in Aug, 2016)

**[ PROPERTIES ]**

**Source:** Prokaryotic expression

**Host:** *E.coli*

**Residues:** Met1~Asp339

**Tags:** N-terminal His and GST Tag

**Subcellular Location:** Membrane, Secreted, Extracellular matrix

**Purity:** > 90%

**Traits:** Freeze-dried powder

**Buffer formulation:** PBS, pH7.4, containing 0.01% SKL, 5% Trehalose.

**Original Concentration:** 200µg/mL

**Applications:** Positive Control; Immunogen; SDS-PAGE; WB.

(May be suitable for use in other assays to be determined by the end user.)

**Predicted isoelectric point:** 7.6

**Predicted Molecular Mass:** 68.6kDa

**Accurate Molecular Mass:** 70kDa as determined by SDS-PAGE reducing conditions.

**[ USAGE ]**

Reconstitute in 10mM PBS (pH7.4) to a concentration of 0.1-1.0 mg/mL. Do not vortex.

**[ STORAGE AND STABILITY ]**

**Storage:** Avoid repeated freeze/thaw cycles.

Store at 2-8°C for one month.

Aliquot and store at -80°C for 12 months.

**Stability Test:** The thermal stability is described by the loss rate. The loss rate was determined by accelerated thermal degradation test, that is, incubate the protein at 37°C for 48h, and no obvious degradation and precipitation were observed. The loss rate is less than 5% within the expiration date under appropriate storage condition.

**[ SEQUENCE ]**

MSTVHEILCK LSLEGDHSTP PSAYGSVKAY TNFDAERDAL NIETAIKTKG  
 VDEVTIVNIL TNRSNAQRQD IAFAYQRRTK KELASALKSA LSGHLETVIL  
 GLLKTPAQYD ASELKASMKG LGTDEDSLIE IICSRTNQEL QEINRVYKEM  
 YKTDLEKDII SDTSGDFRKL MVALAKGRRR EDGSVIDYEL IDQDARDLYD  
 AGVKRKGTDV PKWISIMTER SVPHLQKVFD RYKSYSPYDM LESIRKEVKG  
 DLEN AFLNLV QCIQNKPLYF ADRLYDSMKG KGTRDKVLIR IMVSRSEVDM  
 LKIRSEFKRK YGKSLYYYIQ QDTKGDYQKA LLYLCGGDD

**[ IDENTIFICATION ]**

GGATCCATGCTACTGTTCAAGAAATCCTGTGCAAGCTCAGCTTGGAGGGTGATCACTCTACACCCCAAGTGCATATGGGTCTGTCAAAAGCTATACTA ACTTTGATGCTGAGCGGGATGCTTTGAACATTGAAACAGCCATCAAGACCAAAAGTGTGGATGAGGTCAACATTGCAACAT

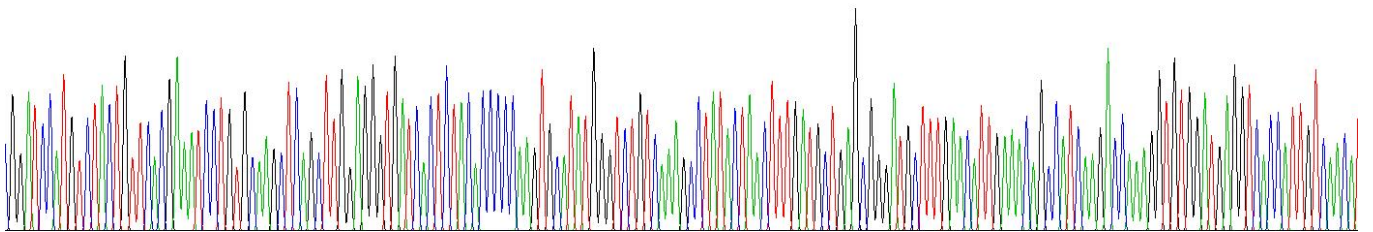


Figure . Gene Sequencing (extract)

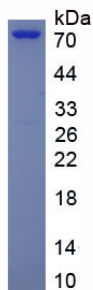


Figure. SDS-PAGE

**[ IMPORTANT NOTE ]**

The kit is designed for research use only, we will not be responsible for any issue if the kit was used in clinical diagnostic or any other procedures.