

**RPP933Hu01 100µg**

**Recombinant Anosmin 1 (ADMLX)**

**Organism Species: *Homo sapiens (Human)***

***Instruction manual***

FOR RESEARCH USE ONLY

NOT FOR USE IN CLINICAL DIAGNOSTIC PROCEDURES

---

12th Edition (Revised in Aug, 2016)

**[ PROPERTIES ]**

**Source:** Prokaryotic expression

**Host:** *E.coli*

**Residues:** Ser283~Leu665

**Tags:** N-terminal His Tag

**Subcellular Location:** Membrane, Secreted

**Purity:** > 90%

**Traits:** Freeze-dried powder

**Buffer formulation:** 20mM Tris, 150mM NaCl, pH8.0, containing 0.01% SKL, 5% Trehalose.

**Original Concentration:** 200µg/mL

**Applications:** Positive Control; Immunogen; SDS-PAGE; WB.

(May be suitable for use in other assays to be determined by the end user.)

**Predicted isoelectric point:** 10.1

**Predicted Molecular Mass:** 46.6kDa

**Accurate Molecular Mass:** 47kDa as determined by SDS-PAGE reducing conditions.

**[ USAGE ]**

Reconstitute in 20mM Tris, 150mM NaCl (pH8.0) to a concentration of 0.1-1.0 mg/mL. Do not vortex.

**[ STORAGE AND STABILITY ]**

**Storage:** Avoid repeated freeze/thaw cycles.

Store at 2-8°C for one month.

Aliquot and store at -80°C for 12 months.

**Stability Test:** The thermal stability is described by the loss rate. The loss rate was determined by accelerated thermal degradation test, that is, incubate the protein at 37°C for 48h, and no obvious degradation and precipitation were observed. The loss rate is less than 5% within the expiration date under appropriate storage condition.

**[ SEQUENCE ]**

SSKDPSAP PAPANLRLAN  
STVNSDGSVT VTIVWDLPEE PDIPVHHYKV FWSWMVSSKS LVPTKKKRRK  
TTDGFQNSVI LEKLQPCDY VVELQAITYW GQTRLKSAKV SLHFTSTHAT  
NNKEQLVKTR KGGIQTQLPF QRRRPTRPLE VGAPFYQDGQ LQVKVYWKKT  
EDPTVNRHV RWFPEACAHN RTTGSEASSG MTHENYIILQ DLSFCKYKV  
TVQPIRPKSH SKAEAVFFTT PPCSALKGKS HKPVGCLGEA GHVLSKVLAK  
PENLSASFIV QDVNITGHFS WKMAKANLYQ PMTGFQVWA EVTTESRQNS  
LPNSIISQSQ ILPSDHVLT VPNLRPSTLY RLEVQVLTGP GEGPATIKTF  
RTPEL

**[ IDENTIFICATION ]**

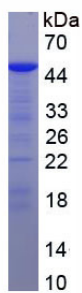


Figure. SDS-PAGE

**[ IMPORTANT NOTE ]**

The kit is designed for research use only, we will not be responsible for any issue if the kit was used in clinical diagnostic or any other procedures.