

RAA788Hu21**Recombinant Antibody to Programmed Cell Death Protein 1 Ligand 1 (PDL1)****Organism Species: Homo sapiens (Human)*****Instruction manual***

FOR IN VITRO USE AND RESEARCH USE ONLY

NOT FOR USE IN CLINICAL DIAGNOSTIC PROCEDURES

1th Edition (Revised in Aug, 2023)

[PROPERTIES]**Source:** Recombinant monoclonal antibody preparation**Host:** Mouse**Antibody isotype:** IgG2b Kappa**Purification:** Protein A affinity chromatography**Clone number:** E286-C1**Traits:** Liquid**Concentration:** 200µg/mL**UOM:** 100µg**Applications:** WB; IF; FCM.**[IMMUNOGEN]****Immunogen:** Proprietary information.**[APPLICATIONS]**

Western blotting: 0.5-5ug/ml

Enzyme-linked Immunosorbent Assay: 0.05-2ug/ml

Flow Cytometry: 0.8-2ug/ml per 10⁶ cells in 100 µl volume.

IF:10-30ug/ml

Optimal working dilutions must be determined by end user.

[FORMULATION]**Form&Buffer:**PBS, pH7.4, containing 0.05%Proclin300, 50% glycerol.

[STORAGE AND STABILITY]

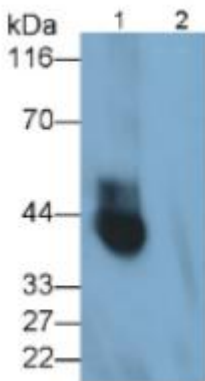
Storage: Avoid repeated freeze/thaw cycles.

Store at 4°C for frequent use.

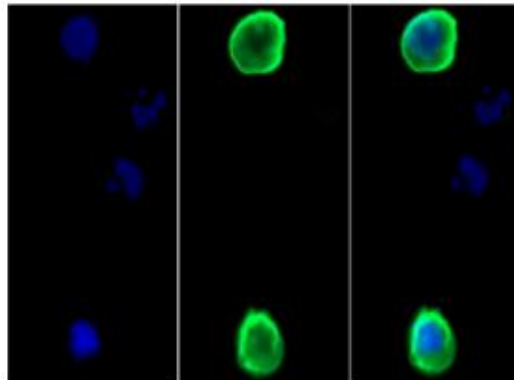
Aliquot and store at -20°C for 12 months.

Stability Test: The thermal stability is described by the loss rate. The loss rate was determined by accelerated thermal degradation test, that is, incubate the protein at 37°C for 48h, and no obvious degradation and precipitation were observed. The loss rate is less than 5% within the expiration date under appropriate storage condition.

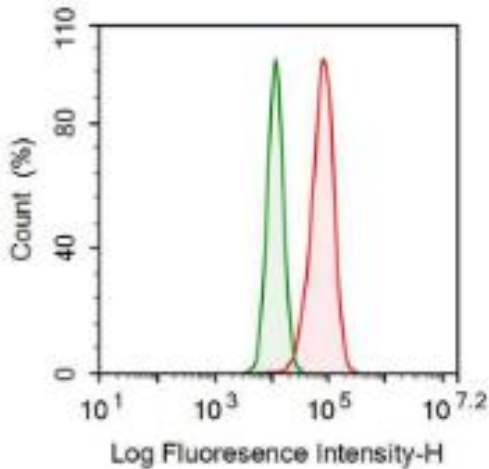
[IDENTIFICATION]



Western Blot; Sample: Lane1:
PDCD1LG1 transfected 293F cell
lysate; Lane2: 293F cell lysate
(negative control)
Primary Ab: 1µg/ml Mouse
Anti-Human PDCD1LG1 Antibody
Second Ab: 2µg/mL HRP-Linked
Caprine Anti-Mouse IgG Polyclonal



FITC staining on IF; Samples:
PDCD1LG1 transfected Human
293F cell lysate;
Primary Ab: 30µg/ml Mouse
Anti-Human PDCD1LG1 Antibody
Second Ab: 2µg/ml FITC-Linked
Caprine Anti-Mouse IgG Polyclonal
Antibody (Catalog: SAA544Mu18)



Human SH-N-SH cell line was stained with 0.08µg mouse Anti-human PDCD1LG1 Recombinant Antibodies (Catalog # RAA788Hu21, red histogram) or Isotype control antibody (Catalog # IS067-Mu03, green histogram), followed by 0.05µg FITC-conjugated Anti-mouse IgG Secondary Antibody (Catalog # SAA544Mu18)

[**IMPORTANT NOTE**]

The kit is designed for research use only, we will not be responsible for any issue if the kit was used in clinical diagnostic or any other procedures.