

**RPB967Ra01 200µg**  
**Recombinant Apolipoprotein A4 (APOA4)**  
**Organism Species: *Rattus norvegicus* (Rat)**  
***Instruction manual***

FOR RESEARCH USE ONLY  
NOT FOR USE IN CLINICAL DIAGNOSTIC PROCEDURES

---

12th Edition (Revised in Aug, 2016)

## [ **PROPERTIES** ]

**Source:** Prokaryotic expression

**Host:** *E.coli*

**Residues:** Glu21~Ser391

**Tags:** N-terminal His and GST Tag

**Subcellular Location:** Secreted

**Purity:** > 90%

**Traits:** Freeze-dried powder

**Buffer formulation:** 100mMNaHCO<sub>3</sub>, 500mMNaCl, pH8.3, containing 1mM EDTA, 1mM DTT, 0.01% SKL, 5% Trehalose and Proclin300.

**Original Concentration:** 200µg/mL

**Applications:** Positive Control; Immunogen; SDS-PAGE; WB.

(May be suitable for use in other assays to be determined by the end user.)

**Predicted isoelectric point:** 5.1

**Predicted Molecular Mass:** 72.4kDa

**Accurate Molecular Mass:** 72kDa as determined by SDS-PAGE reducing conditions.

## [ **USAGE** ]

Reconstitute in 100mM NaHCO<sub>3</sub>, 500mM NaCl (pH8.3) to a concentration of 0.1-1.0 mg/mL. Do not vortex.

## [ **STORAGE AND STABILITY** ]

**Storage:** Avoid repeated freeze/thaw cycles.

Store at 2-8°C for one month.

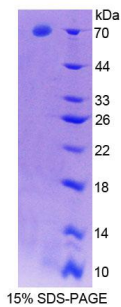
Aliquot and store at -80°C for 12 months.

**Stability Test:** The thermal stability is described by the loss rate. The loss rate was determined by accelerated thermal degradation test, that is, incubate the protein at 37°C for 48h, and no obvious degradation and precipitation were observed. The loss rate is less than 5% within the expiration date under appropriate storage condition.

**[ SEQUENCE ]**

EVTSDQVANV MWDYFTQLSN NAKEAVEQLQ  
KTDVTQQLNT LFQDKLGNIN TYADDLQNKL VPFAVQLSGH LTKETERVRE  
EIQKELEDLR ANMMPHANKV SQMFGDNVQK LQEHLRPYAT DLQAQINAQT  
QDMKRQLTPY IQRMQTTIQD NVENLQSSMV PFANELKEKF NQNMEGLKGQ  
LTPRANELKA TIDQNLEDLR SRLAPLAEGV QEKLNHQMEG LAFQMKKNAE  
ELQTKVSTNI DQLQKNLAPL VEDVQSKLKG NTEGLQKSLE DLNKQLDQQV  
EVFRRAVEPL GDKFNMALVQ QMEKFRQQLG SDSGDVESH SFLEKNLREK  
VSSFMSTLQK KGSPDQPLAL PLPEQVQEQV QEQVQPKPLE S

**[ IDENTIFICATION ]**



**[ IMPORTANT NOTE ]**

The kit is designed for research use only, we will not be responsible for any issue if the kit was used in clinical diagnostic or any other procedures.