

**RPC317Hu01 50µg**

**Recombinant Argininosuccinate Synthetase 1 (ASS1)**

**Organism Species: *Homo sapiens (Human)***

***Instruction manual***

FOR RESEARCH USE ONLY

NOT FOR USE IN CLINICAL DIAGNOSTIC PROCEDURES

---

13th Edition (Revised in Aug, 2023)

**[ PROPERTIES ]**

**Source:** Prokaryotic expression

**Host:** *E.coli*

**Residues:** Met1~Lys412

**Tags:** N-terminal His Tag

**Subcellular Location:** Cytoplasm

**Purity:** > 90%

**Traits:** Freeze-dried powder

**Buffer formulation:** PBS, pH7.4, containing 0.01% SKL, 5% Trehalose.

**Original Concentration:** 2000µg/mL

**Applications:** Positive Control; Immunogen; SDS-PAGE; WB.

(May be suitable for use in other assays to be determined by the end user.)

**Predicted isoelectric point:** 8.1

**Predicted Molecular Mass:** 50.2kDa

**Accurate Molecular Mass:** 47kDa as determined by SDS-PAGE reducing conditions.

**[ USAGE ]**

Reconstitute in 10mM PBS (pH7.4) to a concentration of 0.1-1.0 mg/mL. Do not vortex.

**[ STORAGE AND STABILITY ]**

**Storage:** Avoid repeated freeze/thaw cycles.

Store at 2-8°C for one month.

Aliquot and store at -80°C for 12 months.

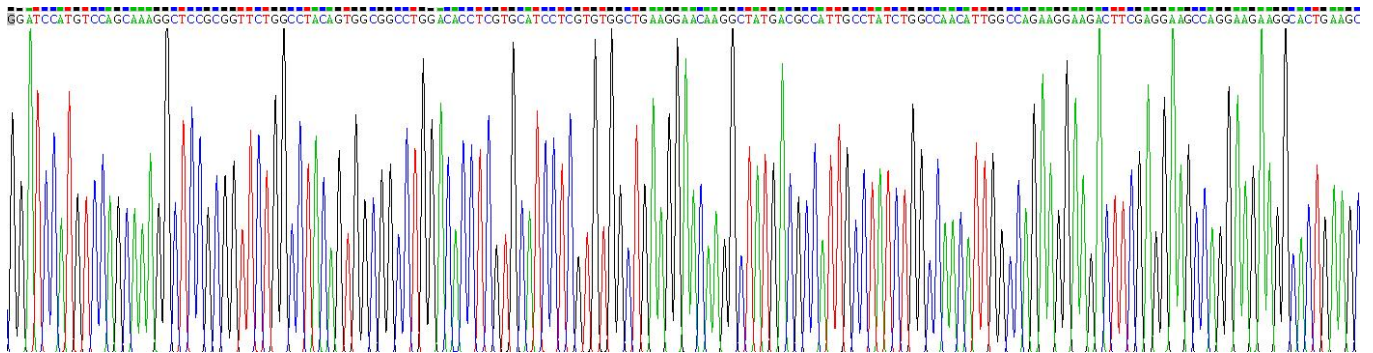
**Stability Test:** The thermal stability is described by the loss rate. The loss rate was determined by accelerated thermal degradation test, that is, incubate the protein at 37°C for 48h, and no obvious degradation and precipitation were observed. The loss rate is less than 5% within the expiration date under appropriate storage condition.

**[ SEQUENCE ]**

```

MSSKGSVLA  YSGGLDTSCI  LVWLKEQGYD  VIAYLANIGQ  KEDFEEARKK
ALKLGAKKVF  IEDVSREFVE  EFIWPAIQSS  ALYEDRYLLG  TSLARPCJAR
KQVEIAQREG  AKYVSHGATG  KGNDQVRFEL  SCYSLAPQIK  VIAPWRMPEF
YNRFKGRNDL  MEYAKQHGIS  IPVTPKNPWS  MDENLMHISY  EAGILENPKN
QAPPGLYTKT  QDPAKAPNTP  DILEIEFKKG  VPVKVTNVKD  GTTHQTSLEL
FMYLNEVAGK  HGVGRIDIVE  NRFIGMKSRG  IYETPAGTIL  YHAHLDIEAF
TMDREVRKIK  QGLGLKFAEL  VYTGFWHSPE  CEFVRHCIAK  SQERVEGKVQ
VSVLKGQVYI  LGRESPLSLY  NEELVSMNVQ  GDYEPTDATG  FININSLRLK
EYHRLQSKVT  AK
    
```

**[ IDENTIFICATION ]**



**Figure . Gene Sequencing (extract)**

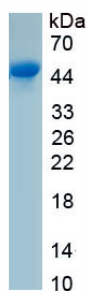


Figure. SDS-PAGE

**[ IMPORTANT NOTE ]**

The kit is designed for research use only, we will not be responsible for any issue if the kit was used in clinical diagnostic or any other procedures.