

**RPG619Hu01 10µg**

**Recombinant Arylsulfatase A (ARSA)**

**Organism Species: *Homo sapiens (Human)***

***Instruction manual***

FOR RESEARCH USE ONLY

NOT FOR USE IN CLINICAL DIAGNOSTIC PROCEDURES

---

13th Edition (Revised in Aug, 2023)

**[ PROPERTIES ]**

**Source:** Prokaryotic expression

**Host:** *E.coli*

**Residues:** Arg19~Gly293

**Tags:** N-terminal His Tag

**Subcellular Location:** Lysosome

**Purity:** > 90%

**Traits:** Freeze-dried powder

**Buffer formulation:** 100mMNaHCO<sub>3</sub>, 500mMNaCl, pH8.3, containing 0.01% SKL, 5% Trehalose.

**Original Concentration:** 400µg/mL

**Applications:** Positive Control; Immunogen; SDS-PAGE; WB.

(May be suitable for use in other assays to be determined by the end user.)

**Predicted isoelectric point:** 5.2

**Predicted Molecular Mass:** 33.0kDa

**Accurate Molecular Mass:** 33kDa as determined by SDS-PAGE reducing conditions.

**[ USAGE ]**

Reconstitute in ddH<sub>2</sub>O to a concentration of 0.1-1.0 mg/mL. Do not vortex.

**[ STORAGE AND STABILITY ]**

**Storage:** Avoid repeated freeze/thaw cycles.

Store at 2-8°C for one month.

Aliquot and store at -80°C for 12 months.

**Stability Test:** The thermal stability is described by the loss rate. The loss rate was determined by accelerated thermal degradation test, that is, incubate the protein at 37°C for 48h, and no obvious degradation and precipitation were observed. The loss rate is less than 5% within the expiration date under appropriate storage condition.

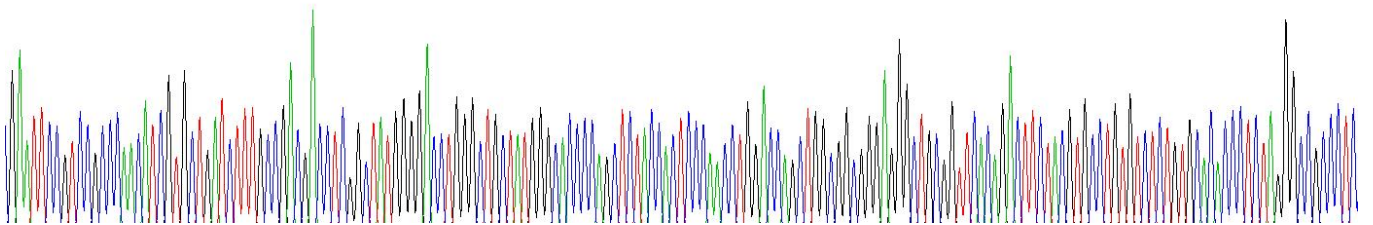
**[ SEQUENCE ]**

```

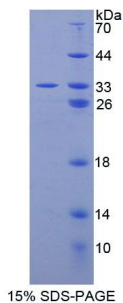
        RP PNIVLIFADD LGYDGLGCG HPSSTTPNLD
QLAAGGLRFT DFYVPVSLCT PSRAALLTGR LPVRMGMPG VLPSSRGGL
PLEEVTVAEV LAARGYLTGM AGKWHLGVP EGAFLPPHQG FHRFLGIPYS
HDQGPCQNLG CFPPATPCDG GCDQGLVPIP LLANLSVEAQ PPWLPGLAR
YMAFAHDLMA DAQRQDRPFF LYYASHHTY PQFSGQSFAE RSGRPFPGDS
LMELDAAVGT LMTAIGDLGL LEETLVIFTA DNGPETMRMS RGG
    
```

**[ IDENTIFICATION ]**

G A A T T C C G T C C G C C C A A C A T C G T G C T G A T C T T T G C C G A G A C C T G G C T A T G G G G A C C C C A G C T A C A C T C C C A A C C T T G G A C C A G C T G G G C G G G G G A G G G C T G C G G T T C A C A G A C T T C T A G T G C C T G T G T C T C T G T G C A C C C C T A G G G C G G C C C T O



**Figure . Gene Sequencing (extract)**



**[ IMPORTANT NOTE ]**

The kit is designed for research use only, we will not be responsible for any issue if the kit was used in clinical diagnostic or any other procedures.