

**RPN942Hu01 100µg**

**Recombinant Autophagy Related Protein 16 Like Protein 1 (ATG16L1)**

**Organism Species: *Homo sapiens (Human)***

***Instruction manual***

FOR RESEARCH USE ONLY

NOT FOR USE IN CLINICAL DIAGNOSTIC PROCEDURES

---

12th Edition (Revised in Aug, 2016)

## [ **PROPERTIES** ]

**Source:** Prokaryotic expression

**Host:** *E.coli*

**Residues:** Met1~Gly284

**Tags:** N-terminal His and GST Tag

**Subcellular Location:** Cytoplasm

**Purity:** > 95%

**Traits:** Freeze-dried powder

**Buffer formulation:** 20mM Tris, 150mM NaCl, pH8.0, containing 1mM EDTA, 1mM DTT, 0.01% SKL, 5% Trehalose and Proclin300.

**Original Concentration:** 20µg/mL

**Applications:** Positive Control; Immunogen; SDS-PAGE; WB.

(May be suitable for use in other assays to be determined by the end user.)

**Predicted isoelectric point:** 5.9

**Predicted Molecular Mass:** 62.8kDa

**Accurate Molecular Mass:** 63kDa as determined by SDS-PAGE reducing conditions.

## [ **USAGE** ]

Reconstitute in ddH<sub>2</sub>O to a concentration of 0.1-0.5 mg/mL. Do not vortex.

## [ **STORAGE AND STABILITY** ]

**Storage:** Avoid repeated freeze/thaw cycles.

Store at 2-8°C for one month.

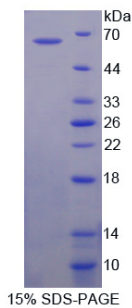
Aliquot and store at -80°C for 12 months.

**Stability Test:** The thermal stability is described by the loss rate. The loss rate was determined by accelerated thermal degradation test, that is, incubate the protein at 37°C for 48h, and no obvious degradation and precipitation were observed. The loss rate is less than 5% within the expiration date under appropriate storage condition.

## [ **SEQUENCE** ]

MSSGLRAADF PRWKRHISEQ LRRDRRLQRQ AFEEIILQYN KLLKSDLHS  
VLAQKLQAEK HDVPNRHEIS PGHDGTWNDN QLQEMAQLRI KHQEELTELH  
KKRGELAQLV IDLNNQMQRK DREMOMNEAK IAELQITISD LETECLDLRT  
KLCDLERANQ TLKDEYDALQ ITFTALEGKL RKTTEENQEL VTRWMAEKAQ  
EANRLNAENE KDSRRRQARL QKELAEAAKE PLPVEQDDDI EVIVDETSDH  
TEETSPVRAI SRAATKRLSQ PAGGLLDSIT NIFG

**[ IDENTIFICATION ]**



**[ IMPORTANT NOTE ]**

The kit is designed for research use only, we will not be responsible for any issue if the kit was used in clinical diagnostic or any other procedures.