

RPB728Hu02 10µg

Recombinant Bone Morphogenetic Protein 9 (BMP9)

Organism Species: *Homo sapiens (Human)*

Instruction manual

FOR RESEARCH USE ONLY

NOT FOR USE IN CLINICAL DIAGNOSTIC PROCEDURES

13th Edition (Revised in Aug, 2023)

[PROPERTIES]

Source: Prokaryotic expression

Host: *E.coli*

Residues: Ser32~Gly427

Tags: N-terminal His Tag

Subcellular Location: Secreted

Purity: > 90%

Traits: Freeze-dried powder

Buffer formulation: 20mM Tris, 150mM NaCl, pH8.0, containing 0.01% skl, 5%Trehalose.

Original Concentration: 350µg/mL

Applications: Positive Control; Immunogen; SDS-PAGE; WB.

(May be suitable for use in other assays to be determined by the end user.)

Predicted isoelectric point: 6.1

Predicted Molecular Mass: 47.6kDa

Accurate Molecular Mass: 48kDa as determined by SDS-PAGE reducing conditions.

[USAGE]

Reconstitute in 20mM Tris, 150mM NaCl (pH8.0) to a concentration of 0.1-1.0 mg/mL. Do not vortex.

[STORAGE AND STABILITY]

Storage: Avoid repeated freeze/thaw cycles.

Store at 2-8°C for one month.

Aliquot and store at -80°C for 12 months.

Stability Test: The thermal stability is described by the loss rate. The loss rate was determined by accelerated thermal degradation test, that is, incubate the protein at 37°C for 48h, and no obvious degradation and precipitation were observed. The loss rate is less than 5% within the expiration date under appropriate storage condition.

[SEQUENCE]

```
HTFNLKMFLE NVKVDLRLSL NLSGVPSQDK TRVEPPQYMI DLYNRYTSK
SAGGNAHSP LGVPGGGLPE
STTPASNIVR SFSMEDAISI TATEDFPFQK HILLFNISIP RHEQITRAEL
RLYVSCQNHV DPSHDLKGSV VIYDVLDTGD AWDSATETKT FLVSQDIQDE
GWETLEVSSA VKRWVRSNST KSKNKLETV ESHRKGCDL DISVPPGSRN
LPFFVVFNSD HSSGKETRL ELREMISHEQ ESVLKLSKD GSTEAGESH
EEDTDGHVAA GSTLARRKRS AGAGSHCQKT SLRVNFEDIG WDSWIIAPKE
YEAYECKGGC FFPLADDVTP TKHAIVQTLV HLKFPTKVVK ACCVPTKLSP
ISVLYKDDMG VPTLKYHYEG MSVAECG
```

[IDENTIFICATION]



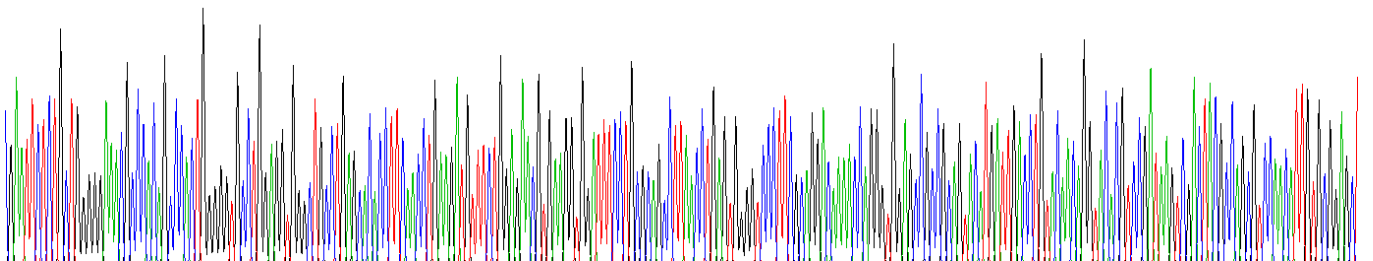
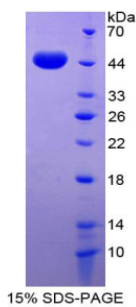


Figure . Gene Sequencing (extract)



[IMPORTANT NOTE]

The kit is designed for research use only, we will not be responsible for any issue if the kit was used in clinical diagnostic or any other procedures.